

INTRODUCTION:

Adam Tech BH and BS series battery holders and Battery snaps are designed to contain batteries in electronic equipment. This series includes battery holders and coin cell holders for a complete range of AAA, AA, C, D, 9V and Coin Cells. Adam Tech produces this series in a variety of terminations such as thru-hole PCB leads, SMT leads, wire leads and solder lugs. Custom lead lengths on wired configurations are also available. Our superior retention holders are molded of UL94-VO or UL94-HB material with spring steel contacts and perform extremely well under normal or adverse environment conditions.

FEATURES:

- Lightweight and compact
- Multiple termination options
- Various battery configurations
- Alkaline and Lithium types

BATTERY HOLDER

SPECIFICATIONS:

Material:

Insulator: Impact resistant Polypropylene, rated UL94-HB
 9V Holder, ABS, Glass filled rated UL94-HB
 Coin Cell: PBT, rated UL94V-0
 Insulator Color: Black
 Spring: Spring Steel, Nickel plated
 Contacts: Spring steel, Nickel plated
 Snap terminals: Brass, Nickel plated
 Wire: 26 Awg, PVC

BATTERY SNAPS

SPECIFICATIONS:

Material:

Soft PVC or rigid PP or PE
 Snap terminals: Brass, nickel plated
 Wire: 26 Awg stranded, UL1007, PVC insulation

Electrical:

Operating voltage: 9V max.

Temperature Rating:

Operating temperature: -10°C to +180°C

Electrical:

Operating voltage: 1.5V & 9V DC max.

Temperature Ratings:

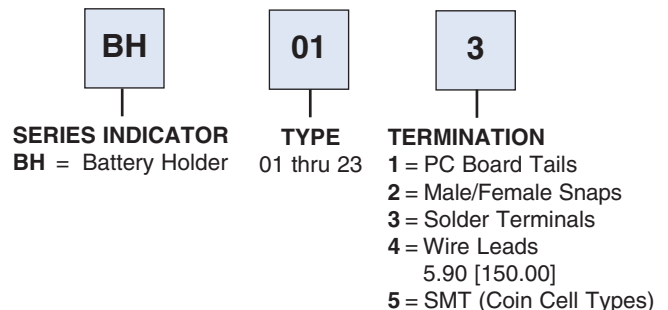
Operating temperature: -10°C to +80°C
 9V holder: -30°C to +105°C
 Coin Cell: -55°C to + 205°C

SAFETY AGENCY APPROVALS:

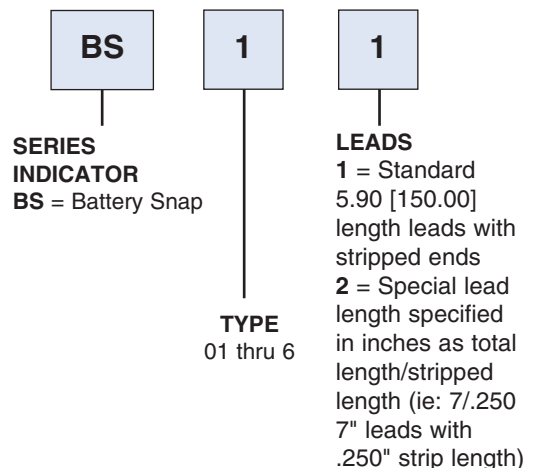
UL Recognized File No. E224053
 CSA Certified File No. LR1578596

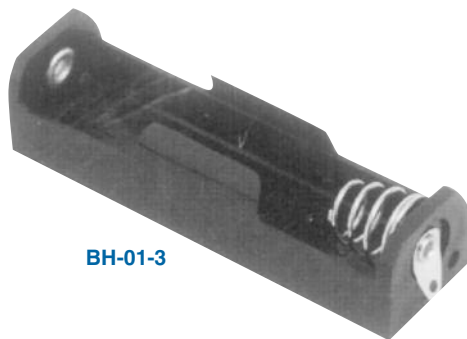
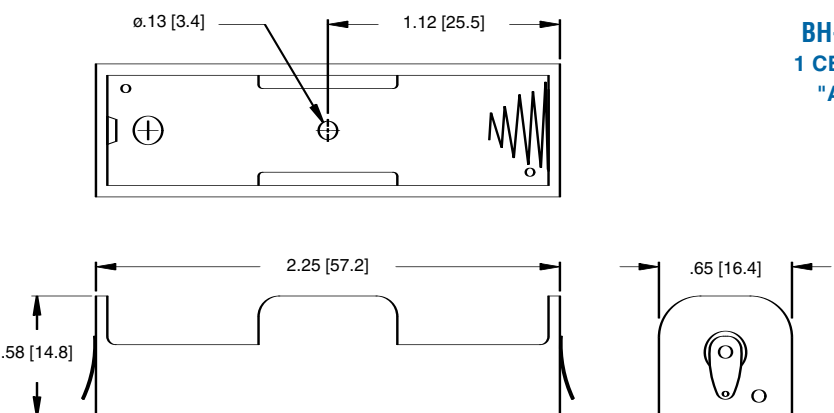
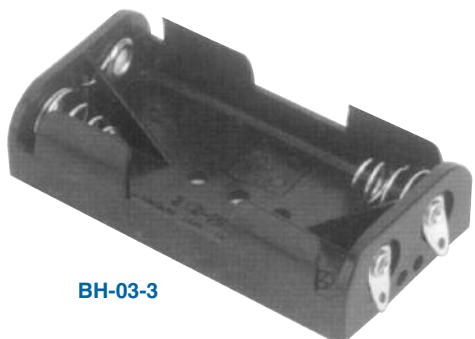
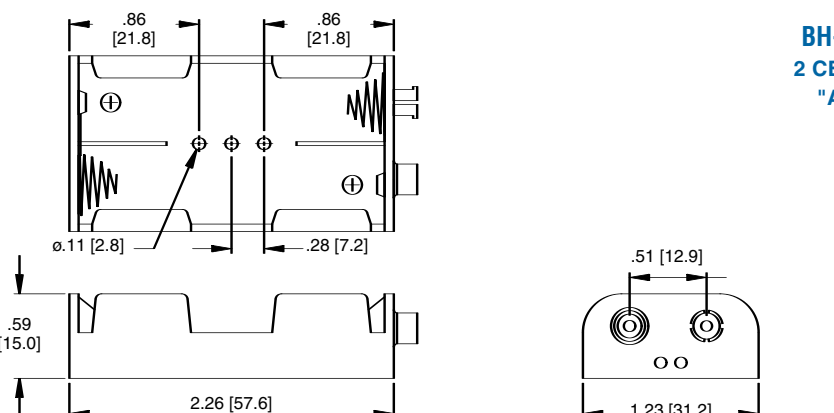
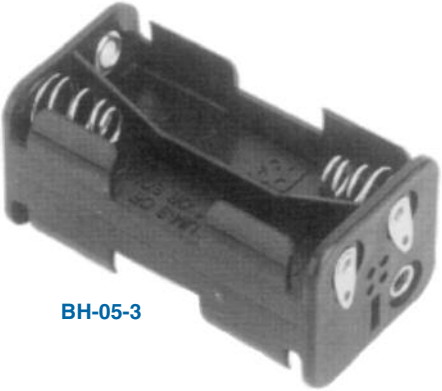
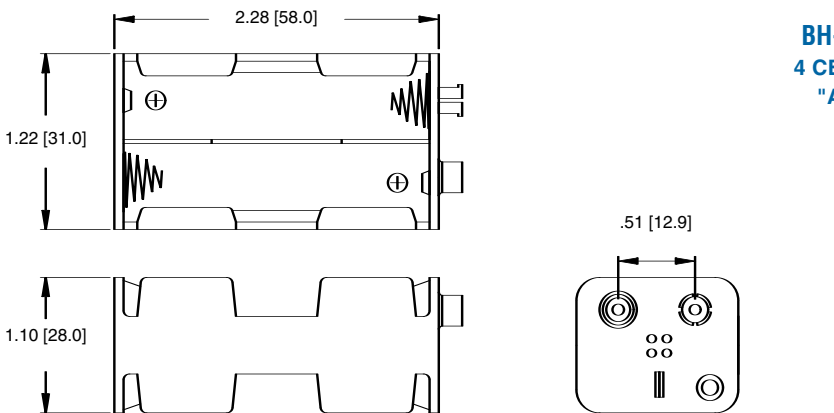
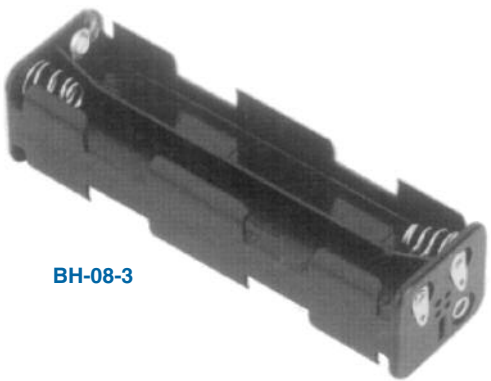
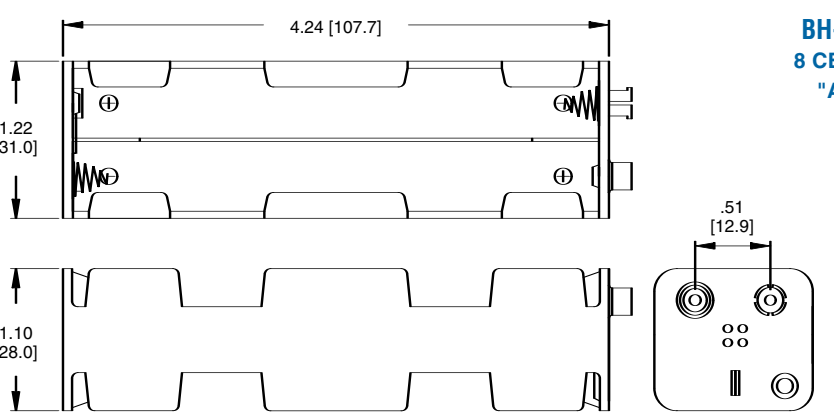


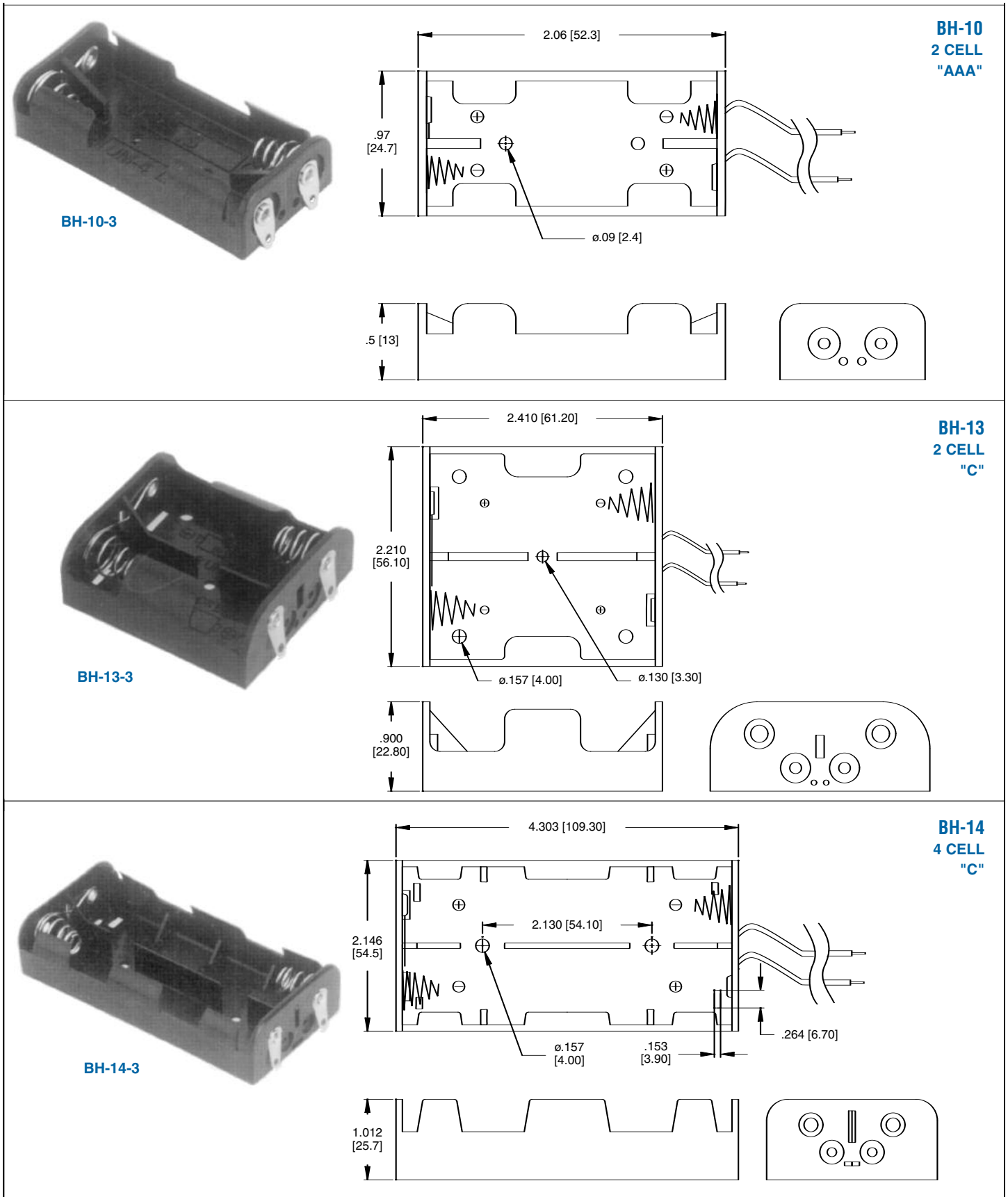
**ORDERING INFORMATION
BATTERY HOLDER**


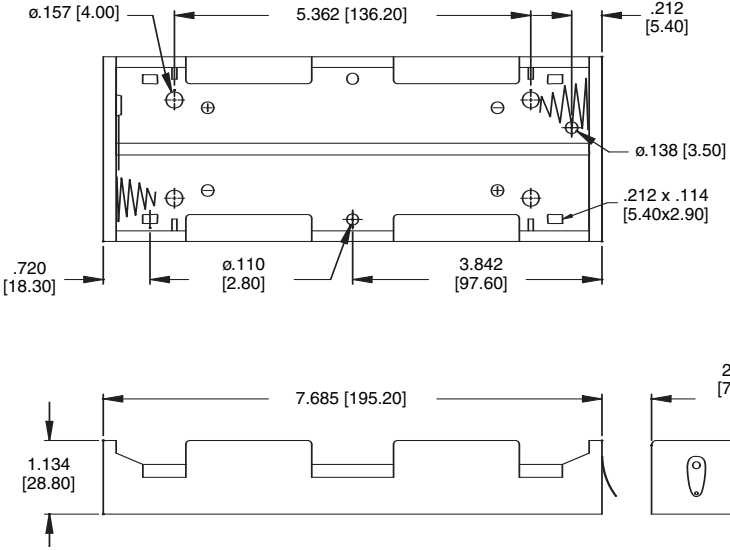
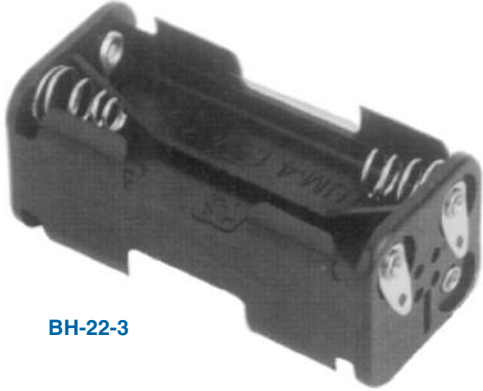
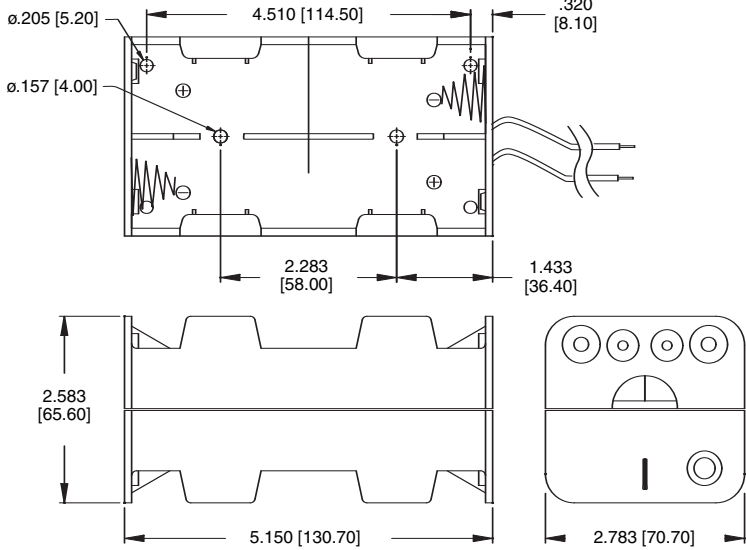
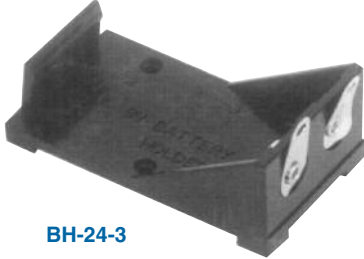
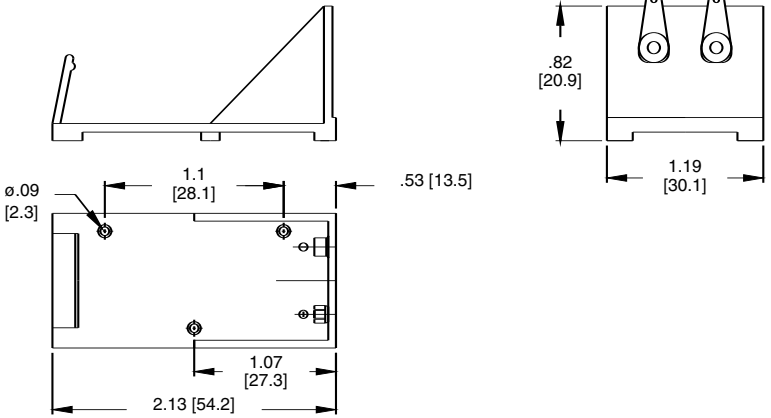


**ORDERING INFORMATION
BATTERY SNAPS**

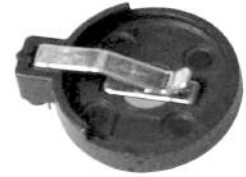
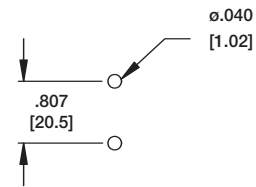
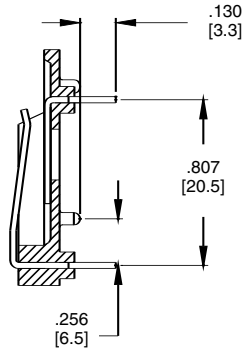
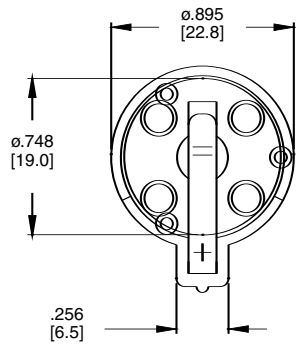


 <p>BH-01-3</p>		<p>BH-01 1 CELL "AA"</p>
 <p>BH-03-3</p>		<p>BH-03 2 CELL "AA"</p>
 <p>BH-05-3</p>		<p>BH-05 4 CELL "AA"</p>
 <p>BH-08-3</p>		<p>BH-08 8 CELL "AA"</p>



 <p>BH-21-3</p>	 <p>Technical drawing of BH-21-3 battery holder showing dimensions and internal cell layout. Dimensions include: $\phi.157$ [4.00], 5.362 [136.20], .212 [5.40], $\phi.138$ [3.50], .212 x .114 [5.40x2.90], 3.842 [97.60], $\phi.110$ [2.80], .720 [18.30], 7.685 [195.20], 1.134 [28.80], and 2.846 [72.30].</p>	<p>BH-21 6 CELL "D"</p>
 <p>BH-22-3</p>	 <p>Technical drawing of BH-22-3 battery holder showing dimensions and internal cell layout. Dimensions include: $\phi.205$ [5.20], 4.510 [114.50], .320 [8.10], $\phi.157$ [4.00], 2.283 [58.00], 1.433 [36.40], 2.583 [65.60], 5.150 [130.70], and 2.783 [70.70].</p>	<p>BH-22 8 CELL "D"</p>
 <p>BH-24-3</p>	 <p>Technical drawing of BH-24-3 battery holder showing dimensions and internal cell layout. Dimensions include: $\phi.09$ [2.3], 1.1 [28.1], .53 [13.5], 1.07 [27.3], 2.13 [54.2], .82 [20.9], and 1.19 [30.1].</p>	<p>BH-24 "9 VOLT"</p>

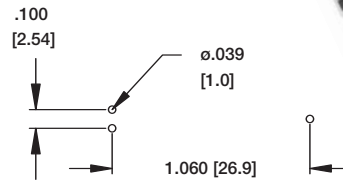
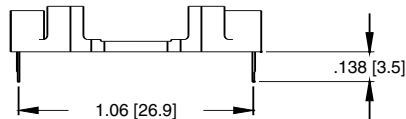
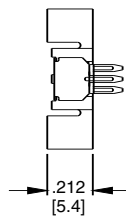
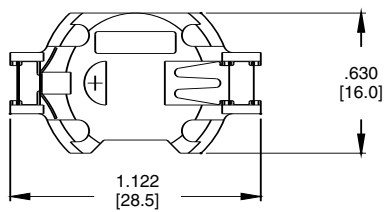
BH-25 COIN CELL BATTERY HOLDER



BH-25-1

Recommended PCB Layout

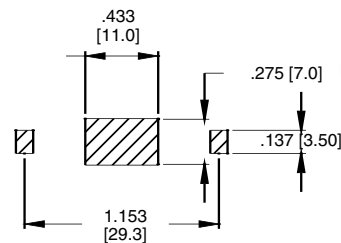
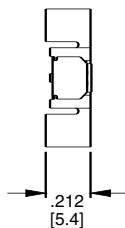
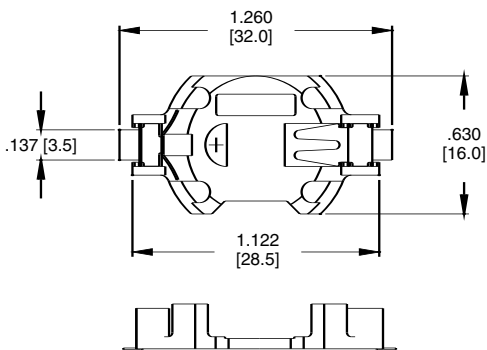
BH-26 COIN CELL BATTERY HOLDER



BH-26-1

Recommended PCB Layout

BH-27 COIN CELL BATTERY HOLDER



BH-27-5

Recommended PCB Layout