

**INTRODUCTION:**

Adam Tech Disk Drive Series connectors are so named for their original use in Disk Drives. Their familiar and reliable performance continues to make them a popular two piece connector interface for many other applications. This series offers both a wire mounted male and a PCB mounted header in straight or right angle mount. These mate to one of two types of wire mounted female housings. One with preloaded IDC contacts and the second with contacts crimped to wire and inserted into the blank female housing. Made with sturdy, precision engineered contacts they provide a high reliability, polarized, secure locking connector design.

**FEATURES:**

- Secure locking, Polarized design
- Wire to wire or Wire to board option
- High reliability contacts
- 5 amp current rating

**MATING CONNECTORS:**

This series mates with all industry standard disk drive connectors

**SPECIFICATIONS:**

**Material:**

- Insulator: Nylon 66, rated UL94V-2
- Insulator Color: Natural
- Contacts: Brass, tin plated

**Electrical:**

- Operating voltage: 250V AC / DC max.
- Current rating: 5 Amps max
- Contact resistance: 20 mΩ max. Initial
- Insulation resistance: 1000 MΩ min.
- Dielectric withstanding voltage: 1500V AC for 1 minute

**Mechanical:**

- Insertion force: 4 lbs max
- Withdrawal force: 1.5 lbs min
- Mating durability: 500 Cycles min.

**Temperature Rating:**

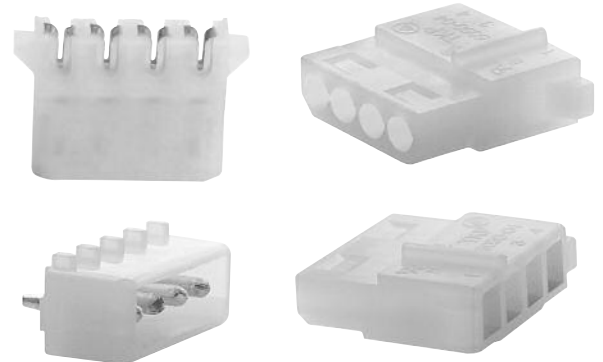
Operating temperature: -20°C to +120°C

**PACKAGING:**

- Anti-ESD plastic bags
- Contacts: 7000 pcs on reel

**SAFETY AGENCY APPROVALS:**

- UL Recognized File No. E224053
- CSA Certified File No. LR1578596



**ORDERING INFORMATION**

**DDH**

**SERIES INDICATOR**

- DDH** = Male, wire mount housing
- DDF** = Female, wire mount housing
- DDS** = Male, straight PC Board Mount
- DDR** = Male, right angle PC Board Mount
- DFW** = Female with Discrete IDC contacts
- DFW-B** = Cover, end mount
- DFW-C** = Cover, feed-thru

**04**

**POSITIONS**

- 02** = 2 Positions
- 03** = 3 Positions
- 04** = 4 Positions

**CRIMP CONTACT**

**DMC**

**CONTACT TYPE**

- DMC** = Male crimp contact
- DFC** = Female crimp contact

**01**

**WIRE SIZE**

**01** = 22-18 AWG

**R**

**PACKAGING**

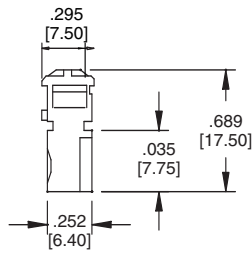
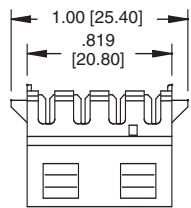
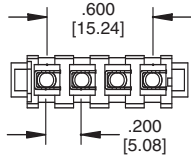
- R** = 7,000 piece reel
- B** = 1,000 pieces loose cut



**DFW**  
FEMALE DISCRETE WIRE  
IDC CONNECTOR



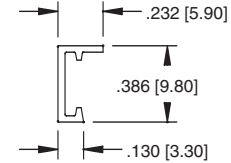
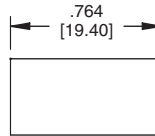
**DFW-04**



**DFW-B**  
END MOUNT COVER



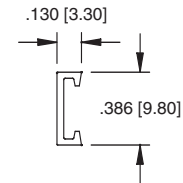
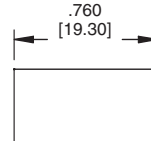
**DFW-B-04**



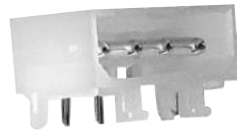
**DFW-C**  
FEED THRU COVER



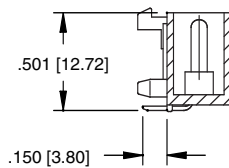
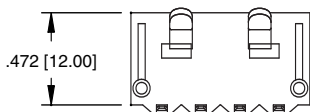
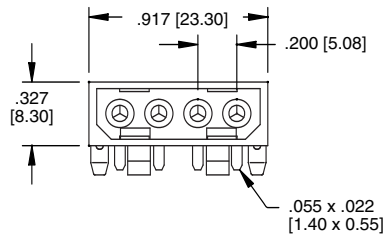
**DFW-C-04**



**DDR**  
MALE RIGHT ANGLE  
PCB MOUNT



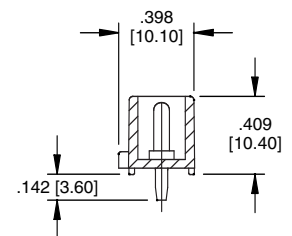
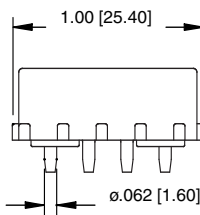
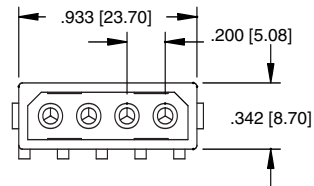
**DDR-04**



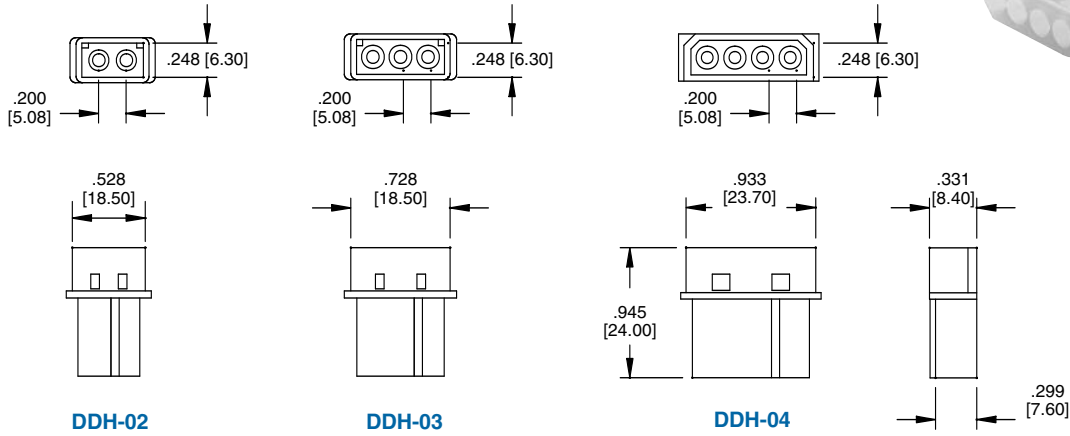
**DDS**  
MALE STRAIGHT  
PCB MOUNT



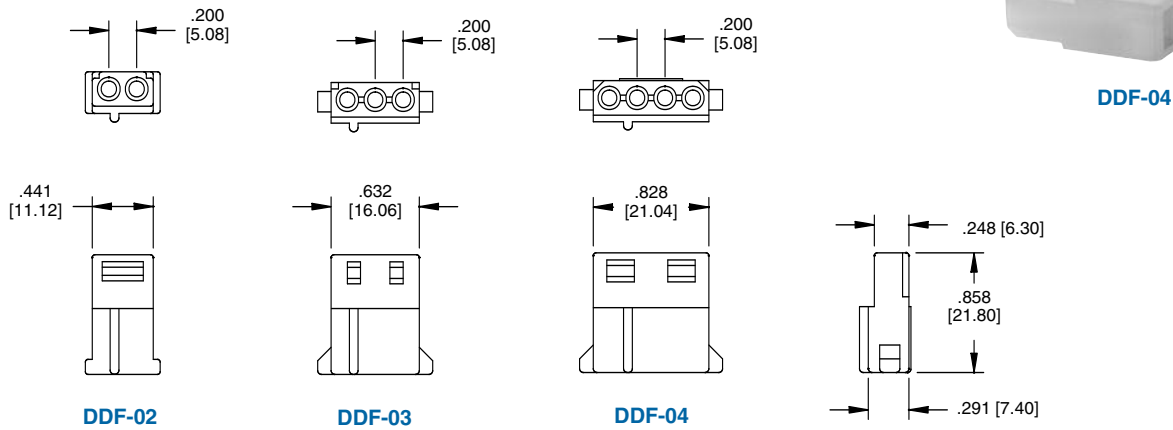
**DDS-04**



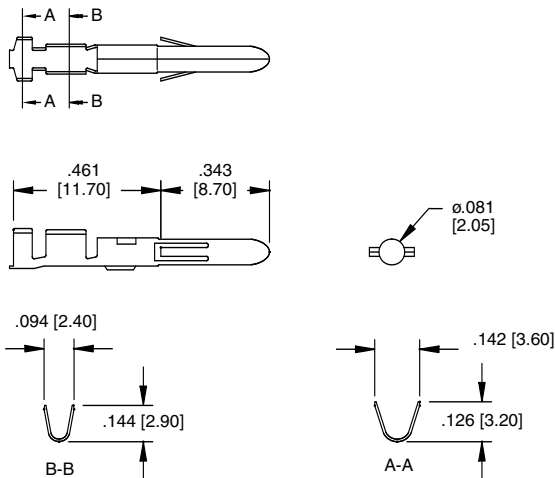
## DDH MALE HOUSING



## DDF FEMALE HOUSING



## DMC-01-R MALE CRIMP CONTACT



## DFC-01-R FEMALE CRIMP CONTACT

