

INTRODUCTION:

Adam Tech FCE Series IDC Card Edge Connectors are designed to quickly and easily mass terminate .050" flat cable and mate directly with the plated fingers of a PCB as a card edge connector. Our superior designed crimp cap features guides to reduce occurrence of mis-mating and our specially engineered contacts provide strong wiping action and high retention to the PCB.

FEATURES:

Available with or without mounting ears
Special "easy fit" cap reduces mis-mating
High Retention to PCB
Selectively Gold plated Bifurcated contacts

MATING OPTIONS:

Printed circuit boards with a thickness of .058" to .070"

SPECIFICATIONS:

Material:

Insulator: PBT, glass reinforced, rated UL94V-0
Insulator Color: Black, (Gray optional)
Contacts: Phosphor Bronze

Contact Plating:

Gold flash (30 µin optional) over nickel underplate on contact area, tin over copper underplate on IDC area

Electrical:

Operating voltage: 250V AC max.
Current rating: 1 Amp max.
Contact resistance: 30 mΩ max. initial
Insulation resistance: 1000 MΩ min.
Dielectric withstanding voltage: 500V AC for 1 minute

Mechanical:

PCB Insertion force: 0.406 lbs per contact max.
With .062 thick board
Withdrawal force: 0.312 lbs per contact min.
With .062 thick board
Recommended wire size: 28 Awg stranded
Cable retention: 28 lbs. min axial force per inch.
Mating durability: 500 cycles min.

Temperature Rating:

Operating temperature: -40°C to +105°C

PACKAGING:

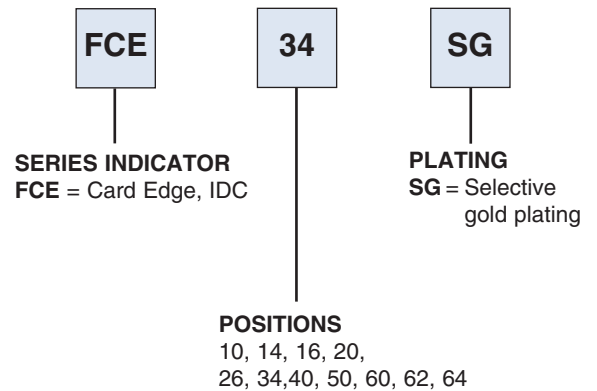
Anti-ESD plastic trays

SAFETY AGENCY APPROVALS:

UL Recognized File No. E224053
CSA Certified File No. LR1578596



ORDERING INFORMATION



STRAIN RELIEF:

FCR - XX (XX= No. of Positions)

KEYING PLUGS:

FCE-K (Key plugs can also be molded into connector, consult factory)

OPTIONS:

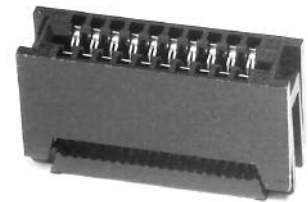
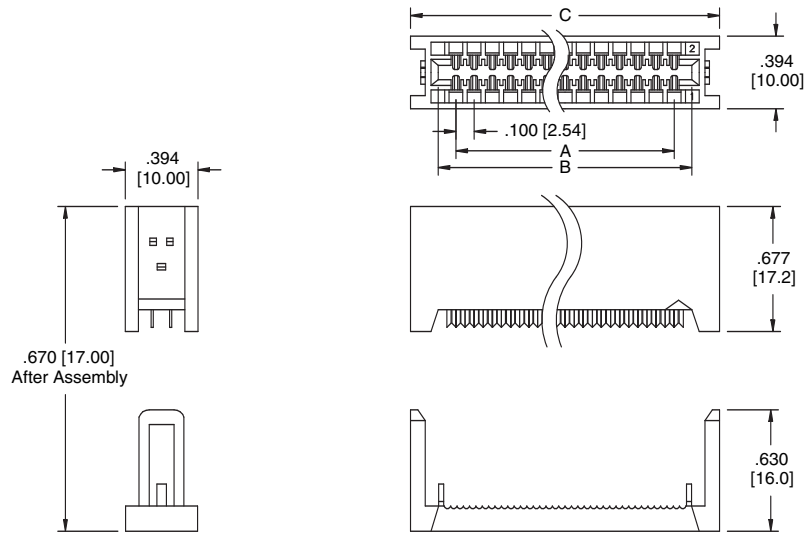
Add designator(s) to end of part number

30 = 30 µin gold plating in contact area

GY = Gray color insulator

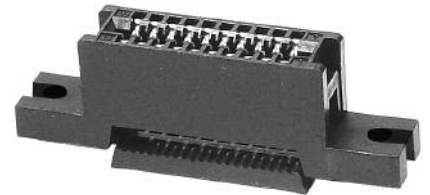
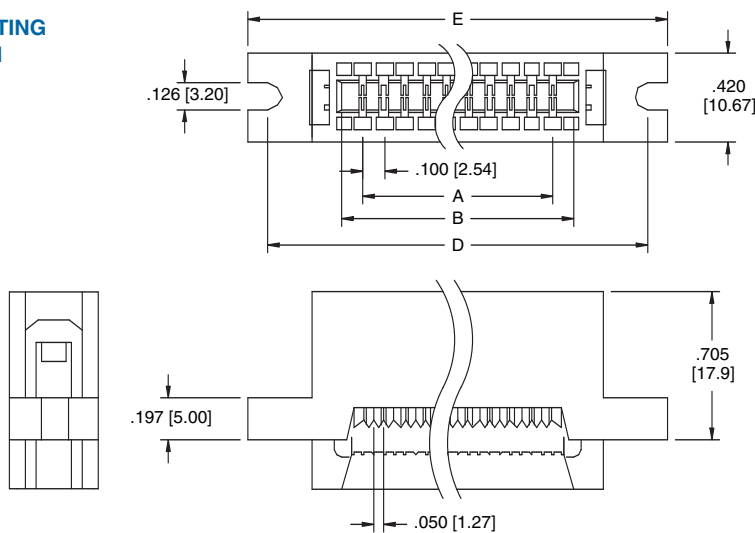
E = Mounting ears with slotted mounting holes

FCE



FCE-20-SG

FCE WITH MOUNTING EAR OPTION



FCE-20-SG-E

DIMENSIONS											
POSITIONS	10	14	16	20	26	34	40	50	60	62	64
A	.400 [10.16]	.600 [15.24]	.700 [17.78]	.900 [22.86]	1.200 [22.86]	1.600 [40.64]	1.900 [48.26]	2.400 [60.96]	2.900 [73.66]	3.000 [76.20]	3.100 [78.74]
B	.604 [15.34]	.804 [20.42]	.904 [22.96]	1.1040 [28.04]	1.404 [35.66]	1.804 [45.82]	2.104 [53.44]	2.604 [66.14]	3.104 [78.84]	3.204 [81.38]	3.304 [83.92]
C	.872 [22.15]	1.072 [27.23]	1.172 [29.77]	1.372 [34.85]	1.672 [42.47]	2.072 [52.63]	2.372 [60.25]	2.872 [72.95]	3.372 [85.65]	3.472 [88.19]	3.304 [90.73]
D	1.300 [33.02]	1.500 [38.10]	1.600 [40.64]	1.800 [45.72]	2.100 [53.34]	2.500 [63.50]	2.800 [71.12]	3.300 [83.82]	3.800 [96.52]	N / A	4.000 [101.60]
E	1.500 [38.10]	1.700 [43.18]	1.800 [45.72]	2.000 [50.80]	2.300 [58.42]	2.700 [68.58]	3.000 [76.20]	3.500 [88.90]	4.000 [101.60]	N / A	4.200 [106.68]