

**INTRODUCTION:**

Adam Tech right angle PCB SCSI II / III connectors are a popular high density interface for many I/O applications requiring a miniature connector. Offered in 20, 26, 28, 40, 50, 68, 80, 100 and 120 positions they are a good choice for high density compact applications. They feature a flat leaf and fork contact design and a one touch, locking receptacle/plug combination. Adam Tech connectors are manufactured with precision stamped contacts offering a choice of contact plating and a wide selection of mating and mounting options. They are ideal for most compact electronic applications.

**FEATURES:**

- Conforms to SCSI II standards
- One touch Locking Receptacle and Plug
- Blade contact with Blanked terminal
- Industry standard compatibility
- Durable metal shell design
- Precision formed bifurcated contacts
- Variety of Mating and mounting options

**MATING CONNECTORS:**

Adam Tech SCSI II / III connectors and all industry standard SCSI II / III connectors.

**SPECIFICATIONS:**

**Material:**

- Insulator: PBT, Glass filled, rated UL94V-0
- Insulator Color: Black
- Contacts: Phosphor Bronze
- Metal backshell: Zinc, Nickel Plated

**Contact Plating:**

Gold Flash over nickel underplate on mating area, Tin over Copper underplate on tails

**Electrical:**

- Operating Voltage: 250V AC
- Current Rating: 1 Amps max.
- Contact Resistance: 35 mΩ max. initial
- Insulation Resistance: 500 MΩ min.
- Dielectric Withstanding Voltage: 500V AC for 1 minute

**Mechanical:**

- Insertion force: 5.3 oz max.
- Withdrawal force: 1.0 oz min.
- Durability: 100 cycles

**Temperature Rating:**

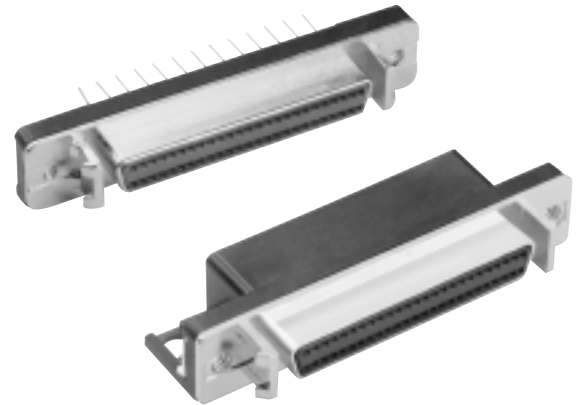
Operating Temperature: -55°C ~ +105°C

**PACKAGING:**

Anti-ESD plastic trays

**APPROVALS AND CERTIFICATIONS:**

- UL Recognized File No. E224053
- CSA Certified File No. LR1578596



**ORDERING INFORMATION**



**SERIES INDICATOR**  
S2A = SCSI II/III  
.050"  
Connector

**MOUNTING ANGLE**  
SR = Socket, Right Angle Mount  
SV = Socket, Vertical Mount

**THREADED MOUNTING HOLES**  
1 = #4-40 threaded holes  
2 = #2-56 threaded holes  
3 = M2.6 thread holes

**BOARD MOUNTING OPTIONS**  
TFA = Flange with #4-40 threaded holes  
TFB = Flange with #2-56 threaded holes  
TFC = .125 Dia. thru-holes  
BL = Board locks (Right angle only)

**MATING FACE MOUNTING OPTIONS**  
2 = Without latch blocks  
3 = With latch blocks

**POSITIONS**  
20, 26, 28, 40, 50, 60,  
68, 80, 100, 120

**OPTIONS**  
Add designator(s) to end of part number  
RC = RoHS compliant lead-free product with Hi-Temp insulator