

### INTRODUCTION:

Adam Tech HMCA Series Card Edge Connectors include Standard and Express versions designed for PCB's in Peripheral Component Interconnect (PCI) applications. Each is manufactured in a four row, high density package which is completely compatible to industry standards and has specially engineered contacts which provide a very short electrical path between boards. Adam Tech card edge connectors are designed for high performance with solid board pegs and precision located, selectively gold plated contacts which are ideal in high speed, increased bandwidth applications

### FEATURES:

- PCI and PCI Express Versions
- High density compact designs
- Industry standard PCI compatible
- Special contact design reduces electrical path
- Selectively plated contacts
- Open bottom for after solder cleaning

### MATING PC BOARDS:

All .050" centerline printed circuit board pads with a thickness of .062 to .072"

### SPECIFICATIONS:

#### Material:

Insulator: PPS, 30% glass reinforced, rated UL94V-0  
Insulator Color: Dark Brown (White 120 pos.)  
Contacts: Phosphor Bronze

#### Contact Plating:

Gold Flash (30 µin. Optional) over Nickel underplate on contact area, tin over copper underplate on tails.

#### Electrical:

Operating voltage: 125V AC max.  
Current rating: 1 Amps max.  
Contact resistance: 30 mΩ max. initial  
Insulation resistance: 1000 MΩ min.  
Dielectric withstanding voltage: 500V AC for 1 minute

#### Mechanical:

Insertion force: 7 oz max.  
Withdrawal force: 0.9 oz min

#### Temperature Rating:

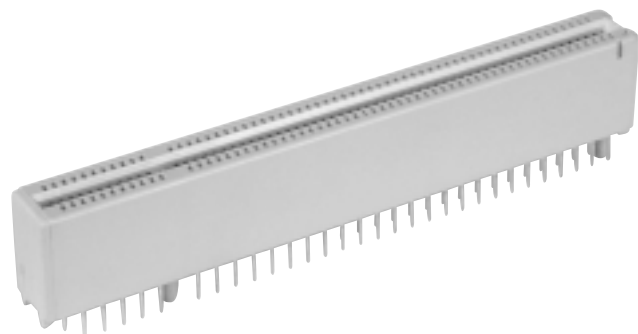
Operating temperature: -55°C to +105°C

### PACKAGING:

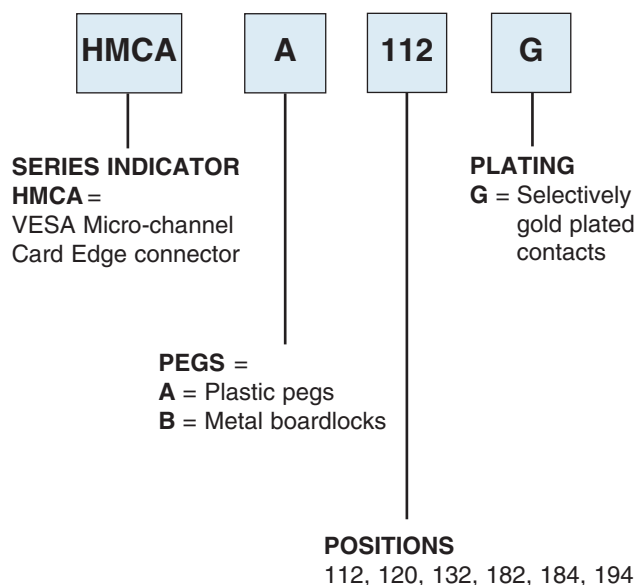
Anti-ESD plastic trays

### SAFETY AGENCY APPROVALS:

UL Recognized File No. E224053  
CSA Certified File No. LR1578596



### ORDERING INFORMATION



### OPTIONS

Add designator(s) to end of part number  
RC = RoHS compliant lead-free product  
with Hi-Temp insulator