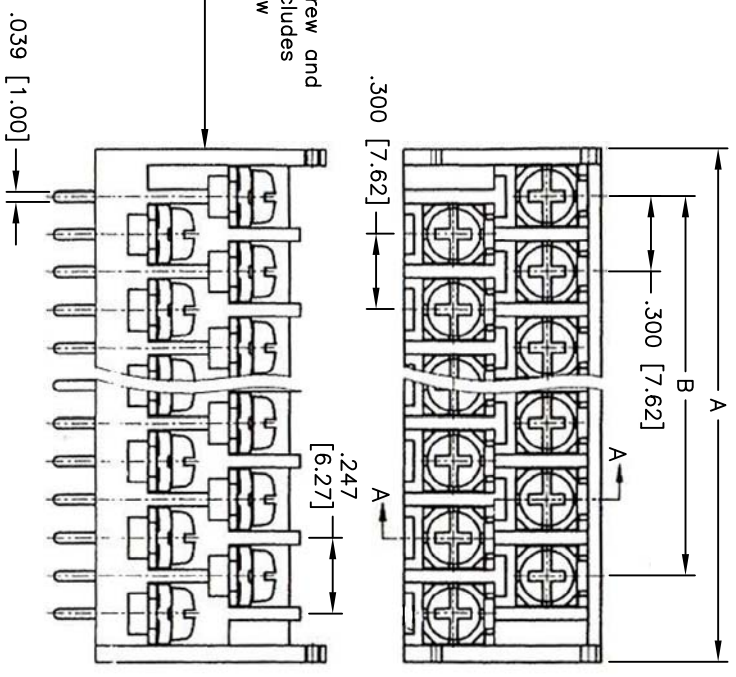
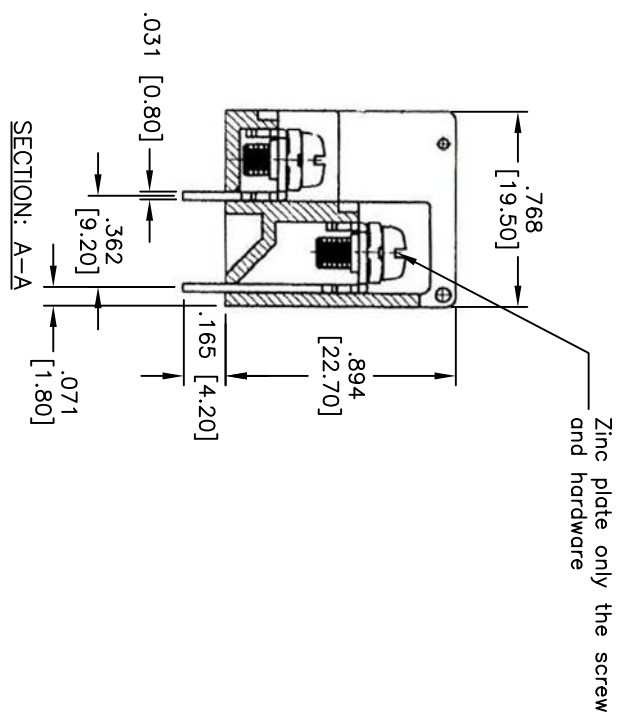


Rev	AWO #	Description	Date	Appr
-		RELEASED	6/15/10	

APPROVED: _____
 DATE: _____ TITLE: _____



Zinc plate only the screw and hardware. Hardware includes the square SEMS+Screw



Zinc plate only the screw and hardware

DO NOT ZINC THE PCB TAILS!!!
 PCB TAIL MUST BE TIN PLATED

SPECIFICATIONS:

- Material: Insulator: PBT, rated UL 94V-2
- Insulator color: Black
- Screw: M3, Steel, Nickel plated
- Contact: Brass, Tin plated
- Electrical: Insulation resistance: 1000 Mohms min. @ DC500V
- Dielectric withstanding voltage: AC2000V at 1 minute
- Mechanical: Wire range: 22 - 14 AWG
- Temperature Rating: Operating temperature: -40°C to +130°C
- Environmental: Lead free, RoHS compliant
- Recommended soldering temp: 235°C for 5 seconds

A = .300 [7.62] x No. of Spaces + .539 [13.70]
 B = .300 [7.62] x No. of Spaces

UNLESS OTHERWISE SPECIFIED
 ALL DIMENSIONS ARE IN INCHES. [MM]
 TOLERANCES: EXCEPT AS NOTED

INCHES	HOLDS
.X ± .10	ØX ± .10
.XX ± .020	ØXX ± .015
.XXX ± .015	ØXXX ± .010

ADAM TECH

909 Railway Avenue, Union, NJ 07083
 Phone: 908-687-5000 Fax: 908-687-5710

300 [7.62] CENTERLINE BARRIER BLOCK,
 PCB TAILS, BARRIER ENDS

APPROVALS	DATE	TITLE	SIZE	PART NO.	REV.
DRAWN	DY	6/15/10	X	TBS-XX-01-B-ZINC	-
CHECKED					
APPROVED					

