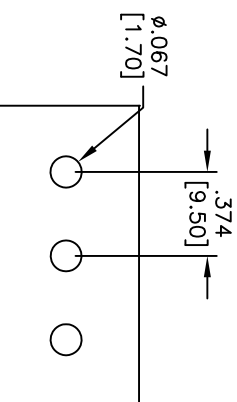
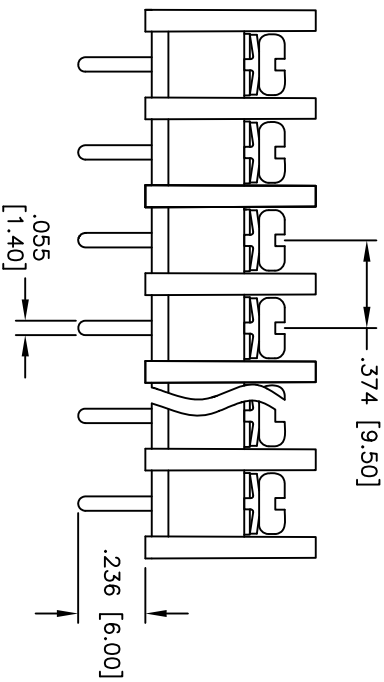
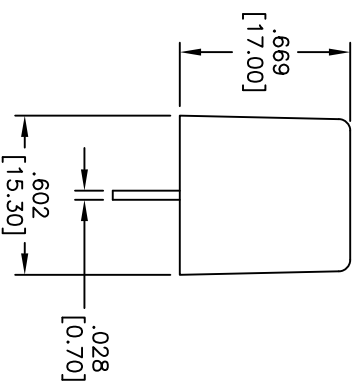
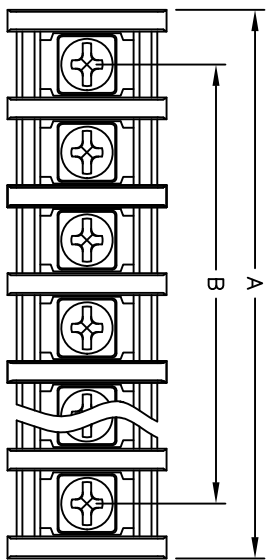


Rev	AWO #	Description	Date	Appr
-		RELEASED	5/17/10	

APPROVED: _____
 DATE: _____ TITLE: _____



RECOMMENDED PCB LAYOUT

Positions: 2 thru 30
 A = .374 [9.50] x No. of Spaces + .472 [12.00]
 B = .374 [9.50] x No. of Spaces

ADAM TECH

909 Railway Avenue, Union, NJ 07083
 Phone: 908-687-5000 Fax: 908-687-5710

374 [9.50] CENTERLINE BARRIER BLOCK,
 PCB TAILS, BARRIER ENDS

SPECIFICATIONS:
 Material: Insulator: PA66, rated UL 94V-2
 Insulator color: Black
 Screw: M4, Steel, Nickel plated
 Contact: Brass, Tin plated
 Electrical: Operating voltage: 300 VAC
 Current rating: 20 Amps
 Contact resistance: 20 mohms
 Insulation resistance: 500 Mohms/500V
 Dielectric withstanding voltage: 2,000V/Min
 Mechanical: Wire range: 22 - 12 AWG
 Temperature Rating: Operating temperature: -40°C to +130°C
 Environmental: Lead free, RoHS compliant
 Recommended soldering temp: 235°C for 5 seconds



UNLESS OTHERWISE SPECIFIED ALL DIMENSIONS ARE INCHES [MM]			
.X	± .10	ØX	± .10
.XX	± .020	ØXXX	± .015
.XXX	± .015	ØXXXX	± .010
APPROVALS		DATE	
DRAWN	DY	5/17/10	
CHECKED			
APPROVED			

REF: 300046C	SCALE: NTS	SHEET 1 OF 1
SIZE X	PART NO. TBF-XX-01-B-SS	REV. -
TITLE: 374 [9.50] CENTERLINE BARRIER BLOCK, PCB TAILS, BARRIER ENDS		