

6

5

4

3

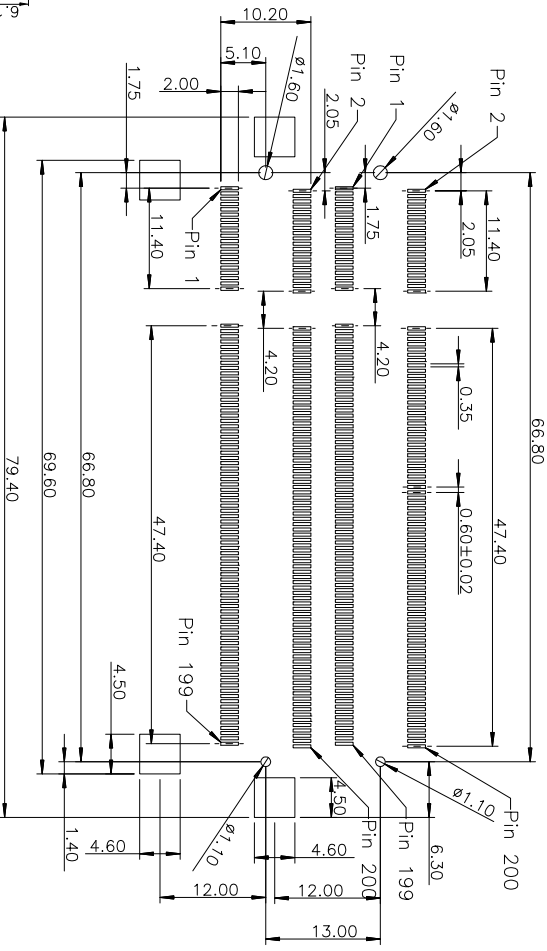
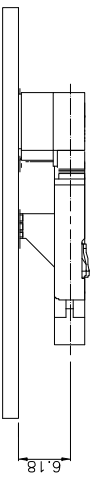
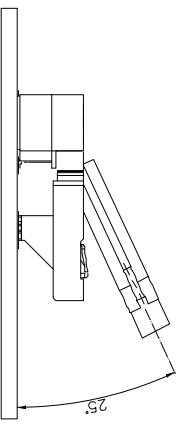
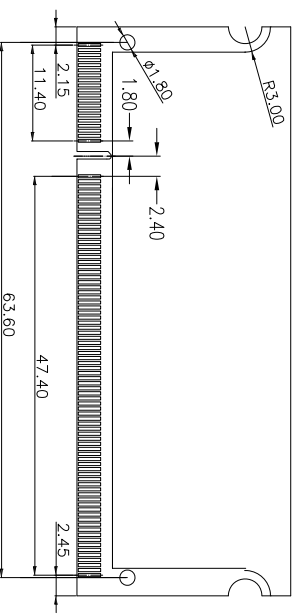
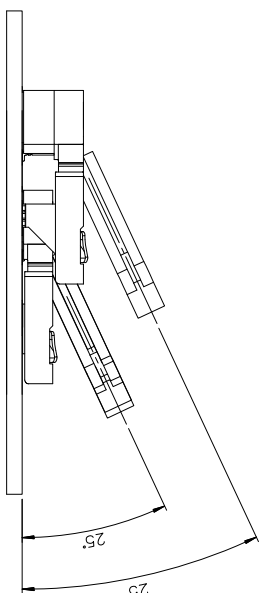
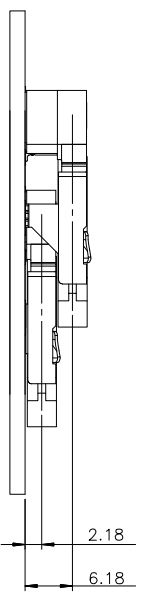
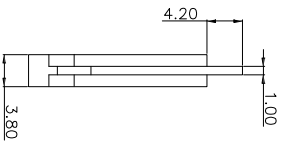
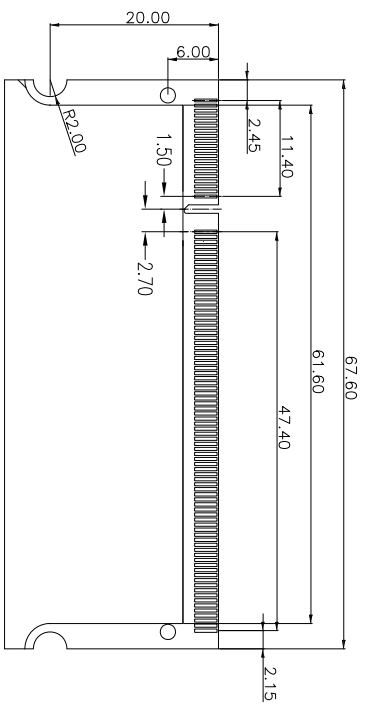
2

1

APPROVED: _____

DATE: _____ TITLE: _____

Rev	AWO #	Description	Date	Appr
		SEE SH1 1 OF 2 FOR REVISION		



PCB LAYOUT: COMPONENT SIDE

ADAM TECH

909 Railway Avenue, Union, NJ 07083
Phone: 908-687-5000 Fax: 908-687-5710

TITLE: SO DIMM SOCKET, 200 PIN, SMT

2.5V DDR RAM, 8MM HEIGHT, REVERSED TYPE

UNLESS OTHERWISE SPECIFIED ALL DIMENSIONS ARE IN MM	
TOLERANCES: EXCEPT AS NOTED	
INCHES	HOLDS
.X ± .10	ØX ± .10
.XX ± .020	ØXX ± .015
.XXX ± .015	ØXXX ± .010
APPROVALS	DATE
DRAWN DY	4/28/11
CHECKED	
APPROVED	

SIZE	PART NO.	REV.
X	SOD-200-S-3-8-0-R	-
REF: S00138T	SCALE: NTS	SHEET 2 OF 2

A

B

C

D

A

B

C

D

6

5

4

3

2

1