

6

5

4

3

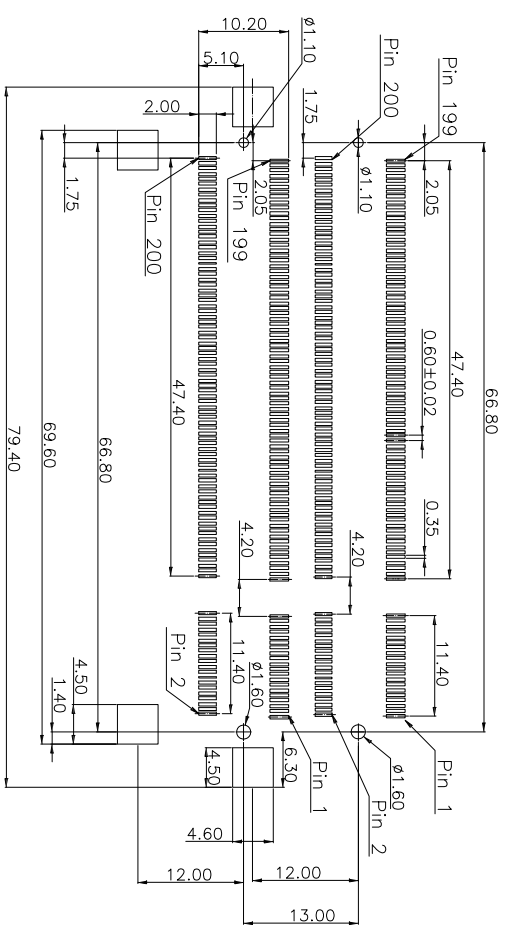
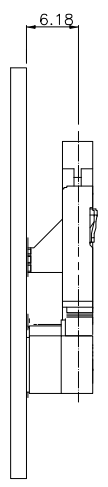
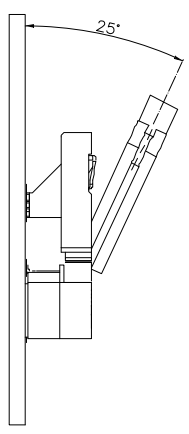
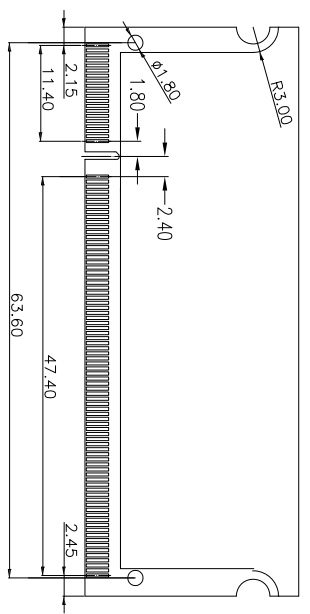
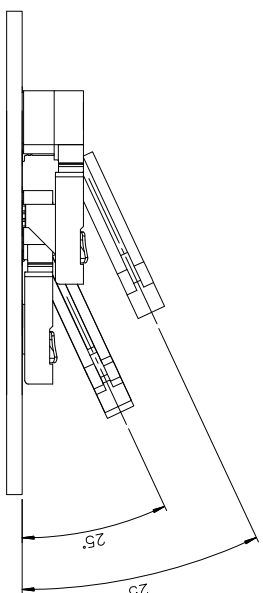
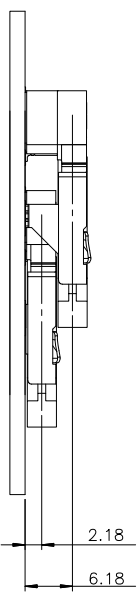
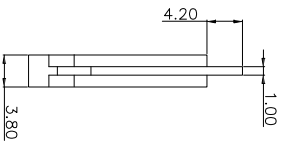
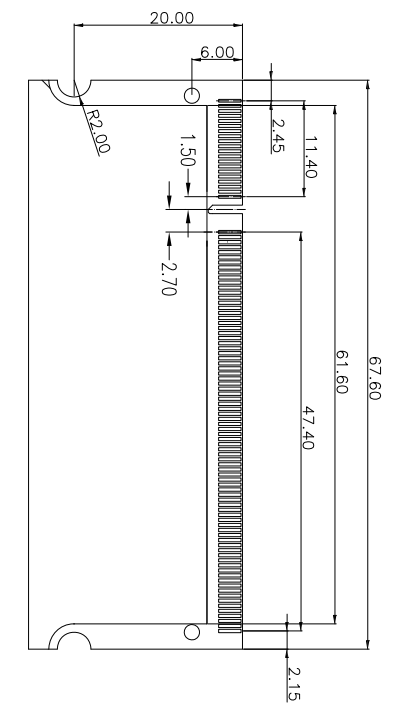
2

1

APPROVED: \_\_\_\_\_

DATE: \_\_\_\_\_ TITLE: \_\_\_\_\_

Rev	AWO #	Description	Date	Appr
		SEE SHT 1 OF 2 FOR REVISION		



PCB LAYOUT: COMPONENT SIDE

UNLESS OTHERWISE SPECIFIED  
ALL DIMENSIONS ARE MM  
TOLERANCES: EXCEPT AS NOTED  
INCHES

.X	± .10	ØX	± .10
.XX	± .020	ØXX	± .015
.XXX	± .015	ØXXX	± .010

APPROVALS: \_\_\_\_\_ DATE: \_\_\_\_\_

# ADAM TECH

909 Rahway Avenue, Union, NJ 07083  
Phone: 908-687-5000 Fax: 908-687-5710

TITLE: SO DIMM SOCKET, 200 PIN, SMT  
2.5V DDR RAM, 8MM HEIGHT

DRAWN	DY	4/28/11
CHECKED		
APPROVED		

SIZE	PART NO.	REV.
X	SOD-200-S-3-8.0	-
REF: S00138T	SCALE: NTS	SHEET 2 OF 2

A

B

C

D

A

B

C

D

6

5

4

3

2

1