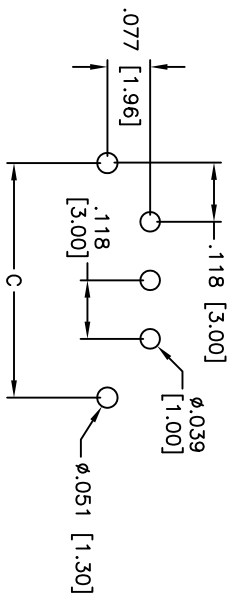
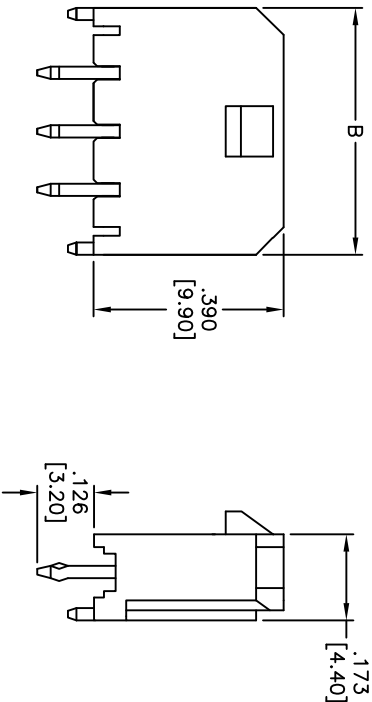
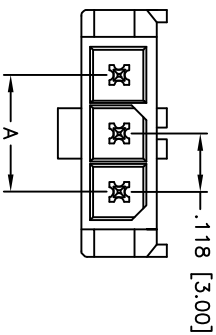


Rev	AWO #	Description	Date	Appr
-		RELEASED	9/06/10	

APPROVED: _____
 DATE: _____ TITLE: _____



RECOMMENDED PCB LAYOUT

CIRCUITS	DIM. A	DIM. B	DIM. C
2	.118 [3.00]	.354 [9.00]	.354 [9.00]
3	.236 [6.00]	.472 [12.00]	.472 [12.00]
4	.354 [9.00]	.591 [15.00]	.591 [15.00]
5	.472 [12.00]	.709 [18.00]	.709 [18.00]
6	.591 [15.00]	.827 [21.00]	.827 [21.00]
7	.709 [18.00]	.945 [24.00]	.945 [24.00]
8	.827 [21.00]	1.063 [27.00]	1.063 [27.00]
9	.945 [24.00]	1.181 [30.00]	1.181 [30.00]
10	1.063 [27.00]	1.299 [33.00]	1.299 [33.00]
11	1.181 [30.00]	1.417 [36.00]	1.417 [36.00]
12	1.299 [33.00]	1.535 [39.00]	1.535 [39.00]

SPECIFICATIONS:

Material: Insulator: Hi-temp thermoplastic, rated UL 94V-0
 Insulator color: Black
 Contacts: Brass, Tin plated
 Plating: Tin over Copper underplate overall
 Electrical: Operating voltage: 250V AC, DC
 Current rating: 5A AC, DC
 Insulation resistance: 1000 Mohms min.
 Withstanding voltage: 1500 VAC for 1 minute
 Temperature range: -40°C to +105°C
 Environmental: Lead free, RoHS compliant.
 Recommended soldering temp: 260°C for 5 sec.



ADAM TECH

909 Railway Avenue, Union, NJ 07083
 Phone: 908-687-5000 Fax: 908-687-5710

118" [3.0mm] MICRO FIT HEADER
 SINGLE ROW WAFER, STRAIGHT

UNLESS OTHERWISE SPECIFIED ALL DIMENSIONS ARE MM [INCHES] TOLERANCES: EXCEPT AS NOTED		TITLE	
INCHES	± .10	ØXX	± .015
HOLES	± .020	ØXXX	± .015
	± .015	ØXXX	± .010
APPROVALS	DATE	DATE	DATE
DRAWN	DY	9/06/10	
CHECKED			
APPROVED			
SIZE	PART NO.	SML-XX-V-T-TH-A	REV.
X			-
REF: S00016T	SCALE: NTS	SHEET 1 OF 1	