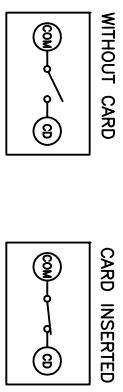
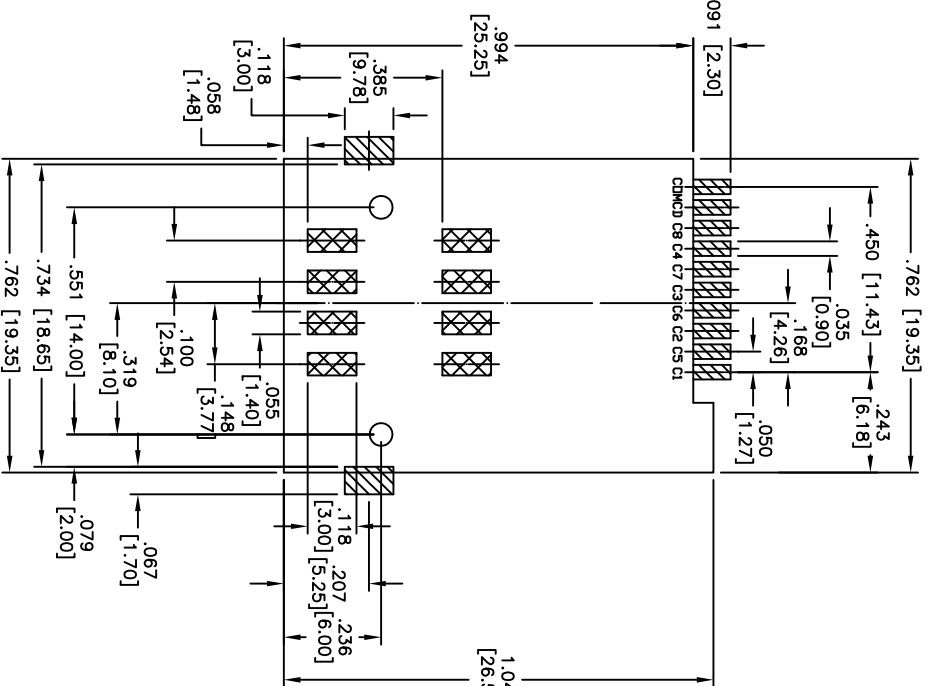
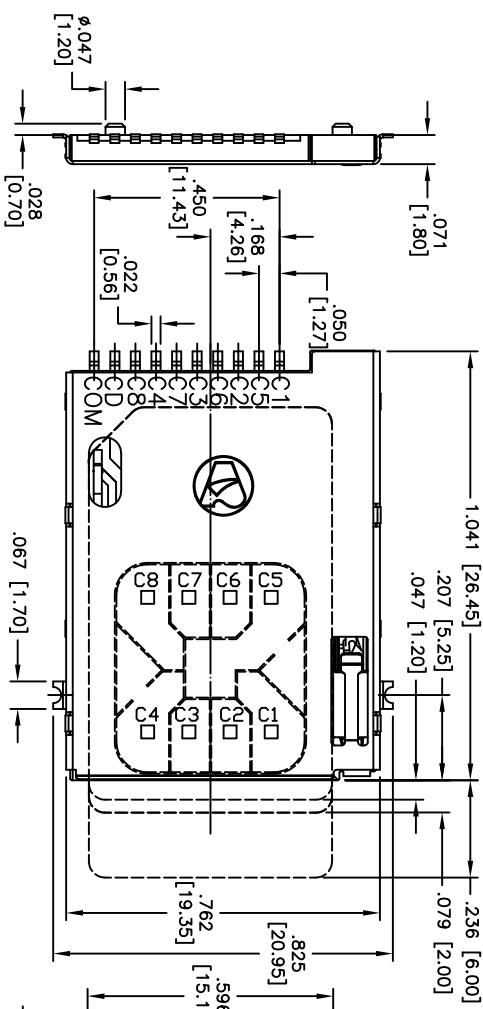
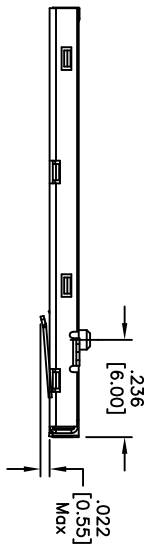


Rev	AWO #	Description	Date	Appr
-		RELEASED	9/28/09	

APPROVED: \_\_\_\_\_  
 DATE: \_\_\_\_\_ TITLE: \_\_\_\_\_



CARD DETECT SW. STATUS.

**SPECIFICATIONS:**

Material: Insulator: LCP with glass fiber reinforced, rated UL 94V-0  
 Insulator color: Black  
 Contacts: Phosphor Bronze  
 Shield cover: Stainless steel  
 Plating: 10U" Gold over Nickel underplate on contact area, Tin over Copper underplate on SMT tails  
 Electrical: Current rating: 0.5 Amps max  
 Contact resistance: 30 mohms max  
 Insulation resistance: 1000 Mohms min @ 500V DC  
 Dielectric withstanding voltage: 500 VAC for 1 minute  
 Temperature Rating: Operating temperature: -25°C to +85°C  
 Environmental: Lead free, RoHS compliant.  
 Recommended soldering temp: 260°C for 5 sec.



UNLESS OTHERWISE SPECIFIED  
 ALL DIMENSIONS ARE INCHES [MM]  
 TOLERANCES: EXCEPT AS NOTED

INCHES	HOLES
.X ± .10	Ø.X ± .10
.XX ± .020	Ø.XX ± .015
.XXX ± .015	Ø.XXX ± .010

APPROVALS: \_\_\_\_\_ DATE: 9/28/09

**ADAM TECH**  
 909 Railway Avenue, Union, NJ 07083  
 Phone: 908-687-5000 Fax: 908-687-5710

TITLE: SIM CARD SOCKET 8+2 PIN, PUSH PUSH TYPE  
 NO STAND OFF

REV.	SIZE	PART NO.	SCALE	SHEET 1 OF 1
	X	SCCP-10-SG-SMT	NIS	

DRAWN: DY  
 CHECKED: \_\_\_\_\_  
 APPROVED: \_\_\_\_\_