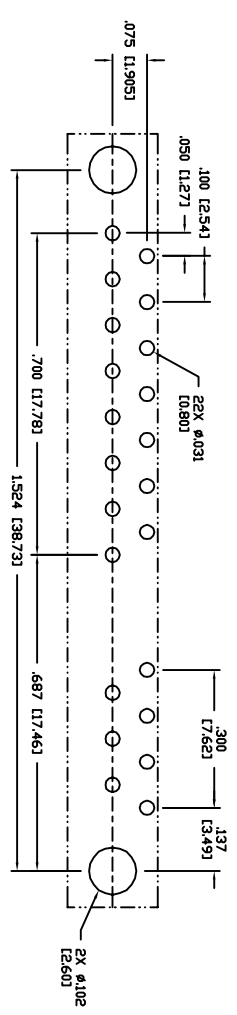
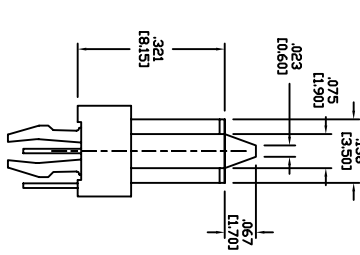
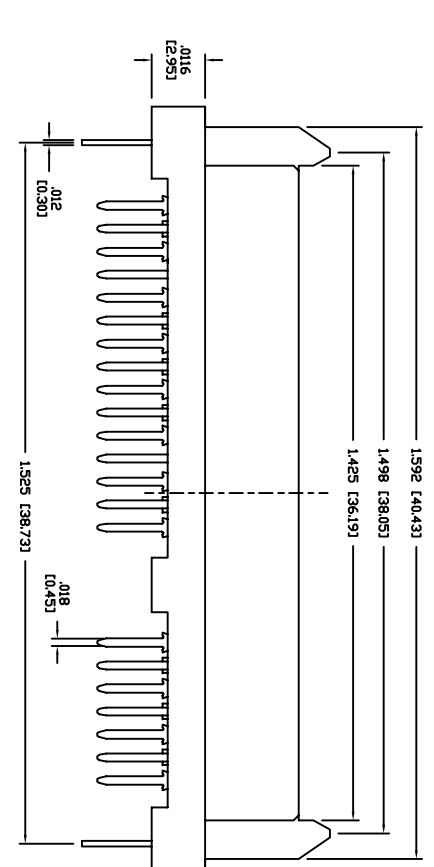
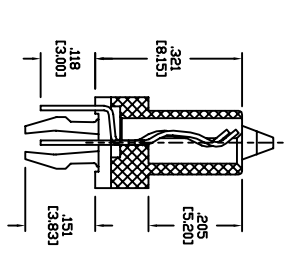
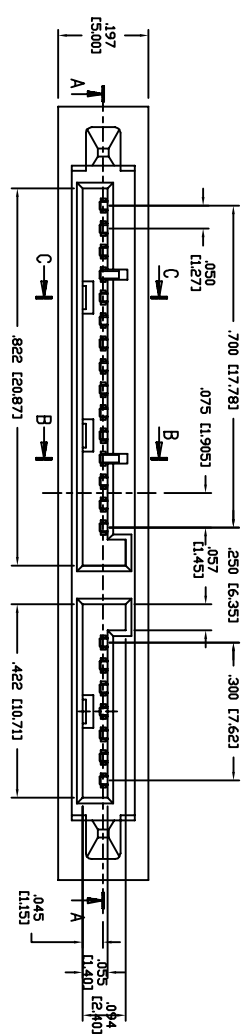
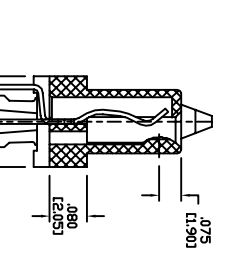


APPROVED: \_\_\_\_\_  
 DATE: \_\_\_\_\_ TITLE: \_\_\_\_\_

Rev	AWO #	Description	Date	Appr
-		RELEASED	9/29/05	
A		REDRAWN	4/23/08	



RECOMMENDED PCB LAYOUT

**SPECIFICATIONS:**  
 Material: Insulator: LCP, rated UL 94V-0  
 Insulator color: Black  
 Contacts: Phosphor Bronze  
 Plating: Gold  
 Gold Flash over Nickel underplate on contact area, Tin over Copper underplate on solder tails  
 Electrical:  
 Operating voltage: 100 VAC max  
 Current rating: 1.5 Amps max  
 Contact resistance: 30 mohms max  
 Insulation resistance: 1,000 Mohms min @ 500 VDC  
 Dielectric withstanding voltage: 500 VAC for 1 minute  
 Mechanical:  
 Insertion force: 45N max.  
 Withdrawal force: 10N min.  
 Durability: 500 cycles  
 Temperature Rating:  
 Operating temperature: -25°C to +125°C  
 Environmental:  
 Lead free, RoHS compliant.  
 Recommended soldering temp: 260°C for 5 sec.

UNLESS OTHERWISE SPECIFIED  
 ALL DIMENSIONS ARE INCHES [MM]  
 TOLERANCES: EXCEPT AS NOTED

INCHES HOLES  
 .X ±.10 Ø.X ±.10  
 .XX ±.020 Ø.XXX ±.015  
 .XXX ±.015 Ø.XXX ±.010

**ADAM TECH**  
 909 Railway Avenue, Union, NJ 07083  
 Phone: 908-687-5000 Fax: 908-687-5710

TITLE: SATA CONNECTOR, 7P + 15P, PCB PINS  
 VERTICAL MOUNT

APPROVALS	DATE	DATE	DATE
DRAWN	SS	9/29/05	
CHECKED			
APPROVED			
SIZE	PART NO.	SCALE	SHEET 1 OF 1
X	SATA-M-PM-VT	NIS	A