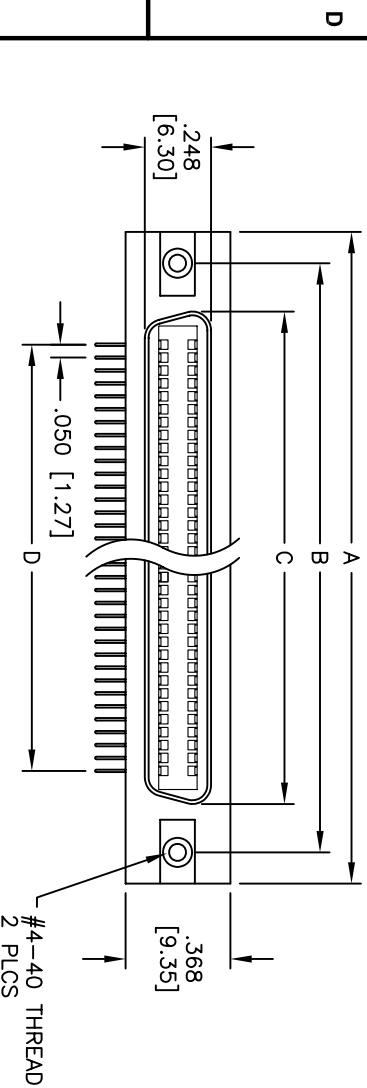


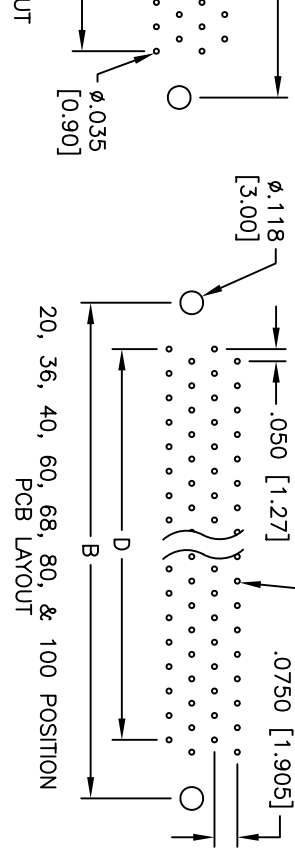
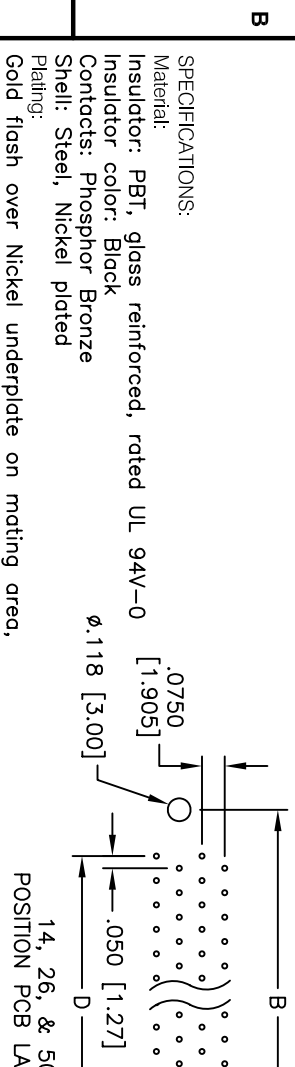
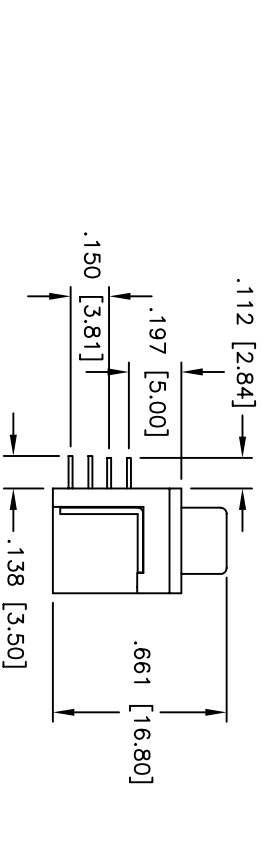
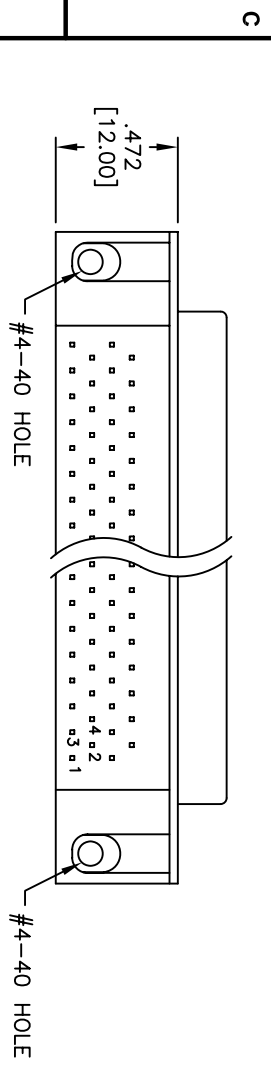
Rev	AWO #	Description	Date	Appr
-		RELEASED	5/20/05	

APPROVED: _____

DATE: _____ TITLE: _____



Positions	A	B	C	D
14	1.173 [29.79]	.931 [23.64]	.506 [12.84]	.300 [7.62]
20	1.323 [33.60]	1.081 [27.45]	.656 [16.65]	.450 [11.43]
26	1.473 [37.41]	1.231 [31.26]	.806 [20.46]	.600 [15.24]
36	1.723 [43.76]	1.480 [37.61]	1.056 [26.81]	.650 [16.51]
40	1.823 [46.30]	1.581 [40.15]	1.156 [29.35]	.950 [24.13]
50	2.073 [52.65]	1.831 [46.50]	1.456 [36.96]	1.200 [30.48]
60	2.323 [59.00]	2.081 [52.85]	1.656 [42.05]	1.450 [36.83]
68	2.551 [64.80]	2.281 [57.93]	1.856 [47.13]	1.650 [41.93]
80	2.823 [71.70]	2.581 [65.55]	2.156 [54.75]	1.950 [49.53]
100	3.323 [84.40]	3.081 [78.25]	2.656 [67.45]	2.450 [62.23]



SPECIFICATIONS:

Material: Insulator: PBT, glass reinforced, rated UL 94V-0
 Insulator color: Black
 Contacts: Phosphor Bronze
 Shell: Steel, Nickel plated
 Plating: Gold flush over Nickel underplate on mating area, Tin over Copper underplate on tails

Electrical:
 Operating voltage: 250 VAC max
 Current rating: 1 Amp max
 Contact resistance: 30 mohms max
 Insulation resistance: 1,000 Mohms min
 Dielectric withstanding voltage: 1,000 VAC for 1 minute
 Temperature Rating: Operating temperature: -55°C to +105°C

Environmental:
 Lead free, RoHS compliant
 Recommended soldering temp: 235°C for 5 seconds

UNLESS OTHERWISE SPECIFIED ALL DIMENSIONS ARE INCHES [MM] TOLERANCES: EXCEPT AS NOTED

.X	± .10	ØX	± .10
.XX	± .020	ØXX	± .015
.XXX	± .015	ØXXX	± .010

APPROVALS: _____ DATE: _____

DRAWN: SS 5/20/05

CHECKED: _____

APPROVED: _____

ADAM TECH
 909 Rahway Avenue, Union, NJ 07083
 Phone: 908-687-5000 Fax: 908-687-5710

TITLE: RIBBON CONNECTOR SOCKET, R/A
 NO LATCH BLOCKS, #4-40 MOUNTING HOLES

SIZE: X PART NO: S2B-SR-XX-2-TFA-1
 SCALE: NTS SHEET 1 OF 1

