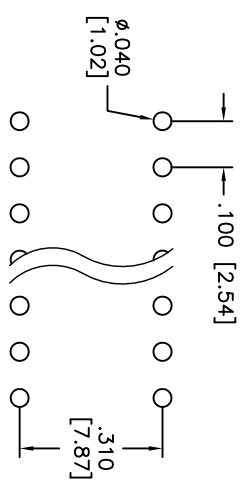
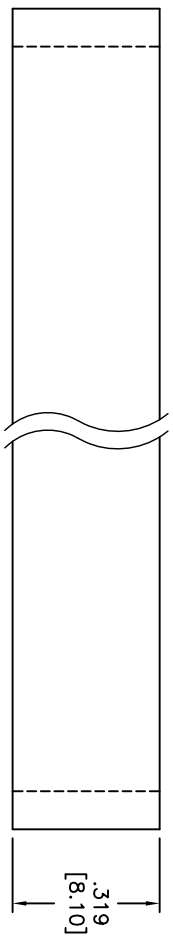
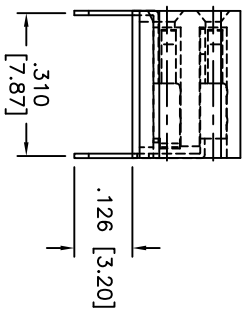
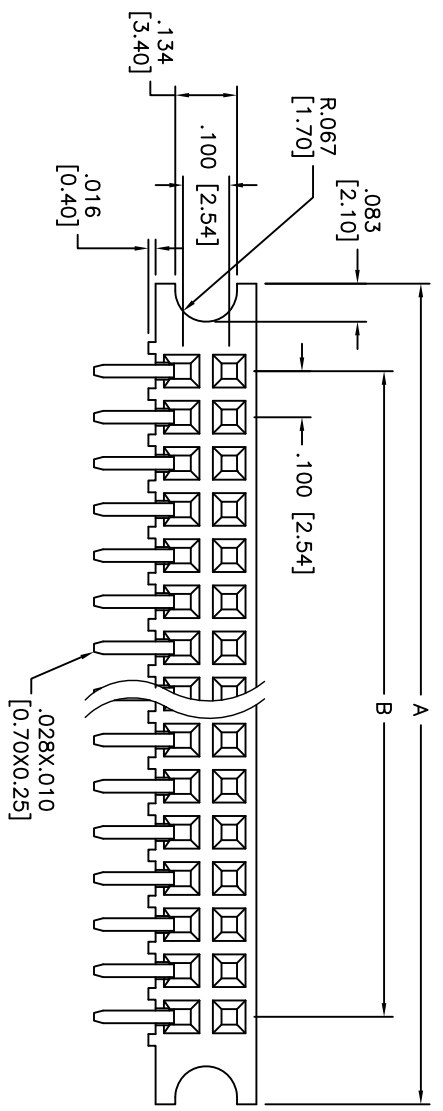


Rev	AWO #	Description	Date	Appr
-		RELEASED	5/11/10	

APPROVED: \_\_\_\_\_  
 DATE: \_\_\_\_\_ TITLE: \_\_\_\_\_



RECOMMENDED PCB LAYOUT



**SPECIFICATIONS:**

Material: PBT, glass reinforced, rated UL 94V-0  
 Insulator color: Black  
 Contacts: Phosphor Bronze  
 Plating: 15u" Gold over Nickel underplate overall.

**Electrical:**

Current rating: 3 Amps max  
 Contact Resistance: 20m Ohms Max.  
 Insulation resistance: 1000 Mohms min @ 500 VDC  
 Dielectric withstanding voltage: 600 VAC for 1 minute  
 Temperature Rating: Operating temperature: -40°C to +105°C

Environmental: Lead free, RoHS compliant.  
 Recommended soldering temp: 235°C for 5 sec.

Positions: 1 thru 20 per row  
 A = .100 [2.54] x No. of Positions+ .280 [7.10]  
 B = .100 [2.54] x No. of Spaces

UNLESS OTHERWISE SPECIFIED	
ALL DIMENSIONS ARE INCHES [MM]	
TOLERANCES: EXCEPT AS NOTED	
INCHES	HOLDS
.X ± .10	ØX ± .10
.XX ± .020	ØXXX ± .015
.XXX ± .015	ØXXX ± .010
APPROVALS	DATE
DRAWN	DY
CHECKED	
APPROVED	

**ADAM TECH**

909 Rahway Avenue, Union, NJ 07083  
 Phone: 908-687-5000 Fax: 908-687-5710

TITLE: RECEPTACLE STRIP, .100 DUAL ROW  
 SIDE ENTRY, 15U" GOLD PLATED

SIZE	PART NO.	REV.
X	RS2BR-XX-G-E-15	-
REF:	S00092T	SCALE: NTS
SHEET 1 OF 1		