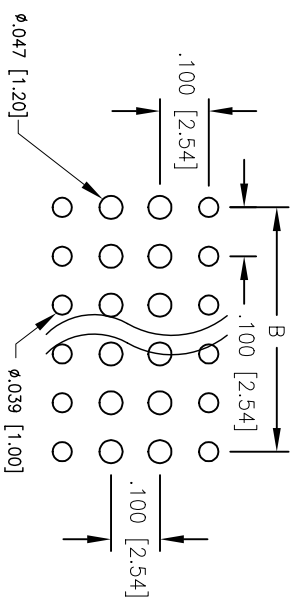
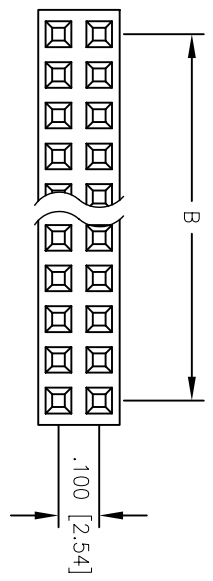
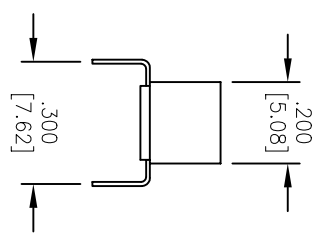
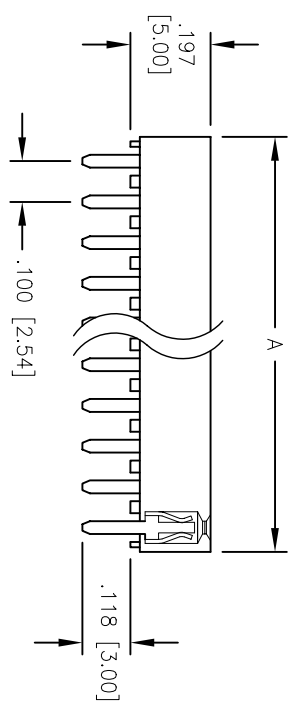


Rev	AWO #	Description	Date	Appr
-		RELEASED	10/11/04	

APPROVED: _____
 DATE: _____ TITLE: _____



RECOMMENDED PCB LAYOUT



SPECIFICATIONS:
 Material: PBT, glass reinforced, rated UL 94V-0
 Insulator color: Black
 Contacts: Phosphor Bronze
 Plating: Gold Flash over Nickel underplate overall

Electrical:
 Operating voltage: 250 VAC max
 Current rating: 3 Amps max
 Contact resistance: 20 mohms max
 Insulation resistance: 5000 Mohms min
 Dielectric withstanding voltage: 1000 VAC for 1 minute
 Temperature Rating: Operating temperature: -40°C to +105°C

A = .100 [2.54] X No. of Positions
 B = .100 [2.54] X No. of Spoces

UNLESS OTHERWISE SPECIFIED
 ALL DIMENSIONS ARE INCHES [MM]
 TOLERANCES: EXCEPT AS NOTED

INCHES	HOLES
X .10	ϕ X $\pm .10$
.XX $\pm .020$	ϕ XX $\pm .015$
.XXX $\pm .015$	ϕ XXX $\pm .010$

ADAM TECH
 909 Rahway Avenue, Union, NJ 07083
 Phone: 908-687-5000 Fax: 908-687-5710

TITLE: .100 RECEPTACLE STRIP, DUAL ROW
 BOTTOM PASS THRU, .300 FOOTPRINT

APPROVALS	DATE
DRAWN SS	10/11/04
CHECKED	
APPROVED	

SIZE	PART NO.	REV.
X	RS2BE-C-XX-G	-

SCALE: NTS SHEET 1 OF 1