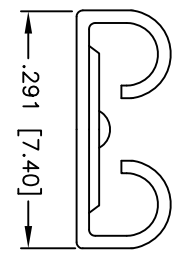
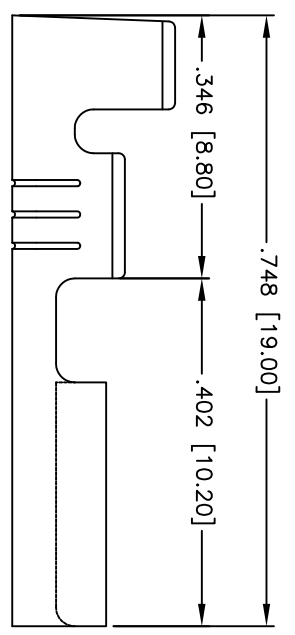
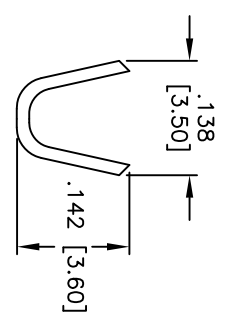
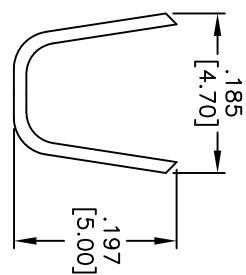
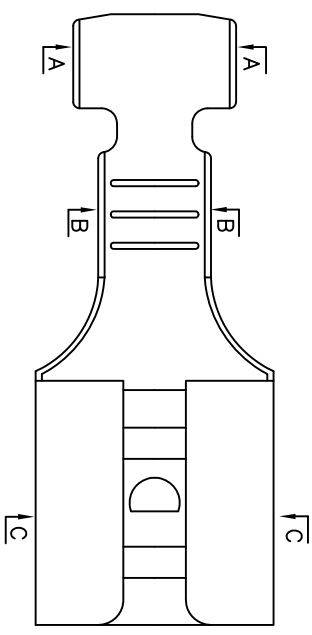


Rev	AWO #	Description	Date	Appr
-		RELEASED	5/13/10	

APPROVED: \_\_\_\_\_  
 DATE: \_\_\_\_\_ TITLE: \_\_\_\_\_



SECTION C-C

**SPECIFICATIONS:**

Terminal: Brass  
 Wire Range: AWG# 20~16  
 Thickness: 0.4mm  
 Environmental:  
 Lead free, RoHS compliant.



UNLESS OTHERWISE SPECIFIED ALL DIMENSIONS ARE INCHES [MM]	
TOLERANCES: EXCEPT AS NOTED	
INCHES	HOLDS
.X ± .10	ØX ± .10
.XX ± .020	ØXXX ± .015
.XXX ± .015	ØXXX ± .010
APPROVALS	DATE
DRAWN	DRY
CHECKED	5/13/10
APPROVED	

**ADAM TECH**  
 909 Rahway Avenue, Union, NJ 07083  
 Phone: 908-687-5000 Fax: 908-687-5710

TITLE	.250" QUICK DISCONNECT TERMINAL		
SIZE	PART NO.	REV.	
X	QD-250-20/16	-	
REF: S00151T	SCALE: NTS	SHEET 1 OF 1	