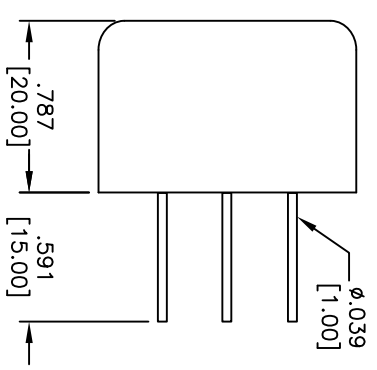
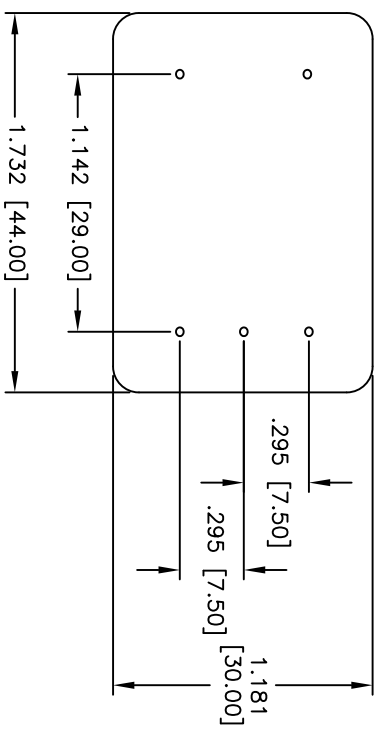
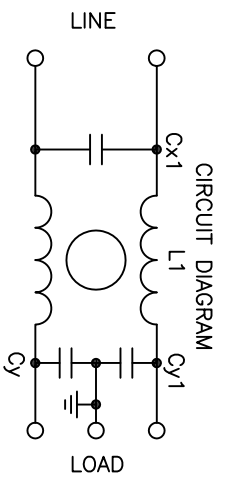
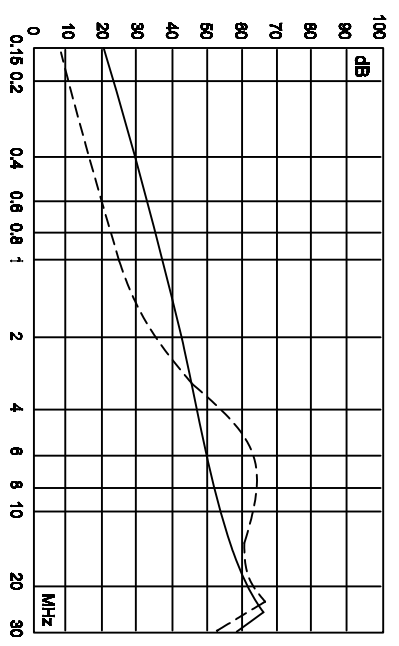


Rev	AWO #	Description	Date	Appr
-	9896	RELEASED	12/04/09	

APPROVED: _____
 DATE: _____ TITLE: _____



Insertion Loss in dB (Measured in 50Ω systems, as IEC / dispr No. 17)



L1 = 2 x 1.5 mH
 Cx1 = 0.1 μF
 Cy1 ~ Cy2 = 3300 pF

SPECIFICATIONS:

- Material: Nylon 66, glass reinforced, rated UL 94V-0
- Insulator color: Black
- Contacts: Phosphor Bronze
- Casing: Copper Alloy, Nickel plated
- Plating: Nickel over Copper underplate overall
- Electrical:
 - Operating voltage: 120/250 VAC
 - Current rating: 6 Amps max
 - Test Voltage:
 - Line to Ground: 1500V AC for 1 min.
 - Insulation resistance: 3000 Mohms min.
 - Leakage current: 0.5 mA max
 - Temperature Rating: Operating temperature: -25°C to +85°C
 - Environmental: Lead free, RoHS compliant

ADAM TECH

909 Rahway Avenue, Union, NJ 07083
 Phone: 908-687-5000 Fax: 908-687-5710

EMIRFI POWER FILTER
 METAL CASE, PCB MOUNT

UNLESS OTHERWISE SPECIFIED ALL DIMENSIONS ARE INCHES [MM]	
TOLERANCES: EXCEPT AS NOTED	
INCHES	HOLDS
.X ± .10	ØX ± .10
.XX ± .020	ØXXX ± .015
.XXX ± .015	ØXXX ± .010
APPROVALS	
DRAWN	DY
CHECKED	
APPROVED	
DATE	12/04/09

SIZE	PART NO.	REV.
X	PLF-6PC2	-
REF: S0004C	SCALE: NTS	SHEET 1 OF 1