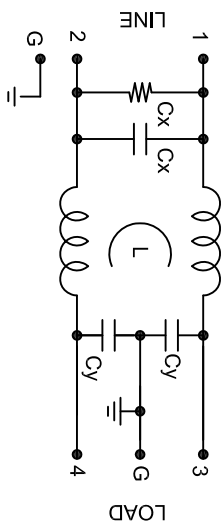


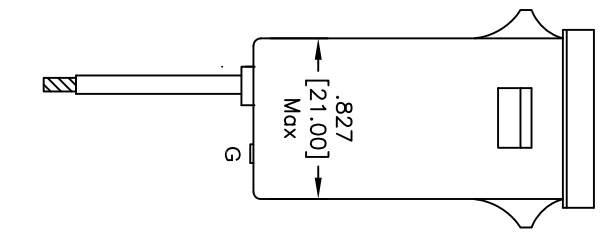
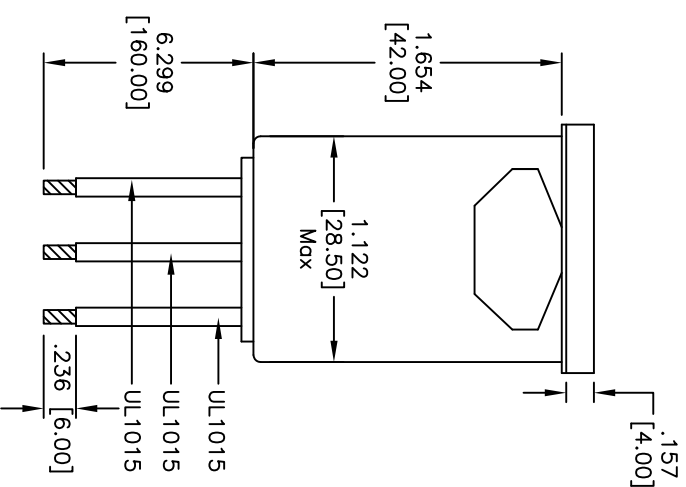
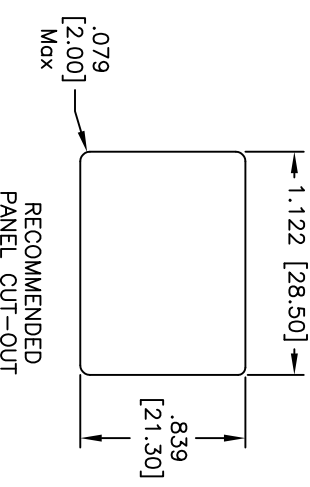
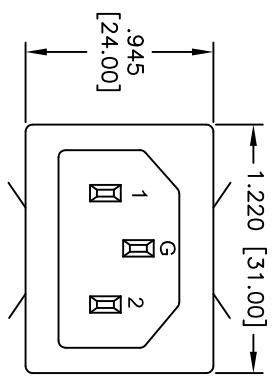
Rev	AWO #	Description	Date	Appr
-		RELEASED	3/22/10	

APPROVED: _____
 DATE: _____ TITLE: _____

CIRCUIT DIAGRAM



L = 2X0.15 mH
Cx = 0.1 uF
Cy = 2200 pF
R = 1.0 Mohms



UL1015 16AWG (BLUE)
 UL1015 16AWG (GRN/YEL)
 UL1015 16AWG (BROWN)

SPECIFICATIONS:
 Material: Copper Alloy, Nickel plated
 Casing: Copper Alloy, Nickel plated
 Plating: Nickel over Copper underplate overall
 Electrical:
 Rated Voltage: 125/250 VAC
 Rated Current: 15 Amps max
 Operating Frequency: 50/60Hz
 Leakage Current (each line to ground 250VAC 50Hz): 0.6mA max
 Hipot Rating: (for one minute)
 Line to Line: 1450 VDC
 Line to Line: 1800 VDC
 Insulation resistance: 250VDC/100 Mohms min
 Direct current resistance: 0.1 OHM max
 Temperature Rating:
 Operating temperature: -25°C to +85°C
 Environmental:
 Lead free, RoHS compliant



ADAM TECH

909 Rahway Avenue, Union, NJ 07083
 Phone: 908-687-5000 Fax: 908-687-5710

EMF FILTER

UNLESS OTHERWISE SPECIFIED ALL DIMENSIONS ARE INCHES [MM]	
TOLERANCES: EXCEPT AS NOTED	HOLDS
.X ± .10	ØX ± .10
.XX ± .020	ØXX ± .015
.XXX ± .015	ØXXX ± .010
APPROVALS	DATE
DRAWN DY	3/22/10
CHECKED	
APPROVED	

SIZE	PART NO.	REV.
X	PLF-6-WL-6.30	-
REF: S00144T	SCALE: NTS	SHEET 1 OF 1