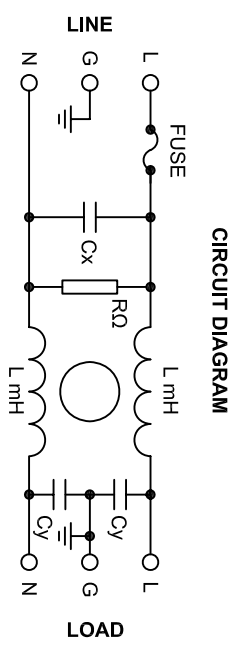
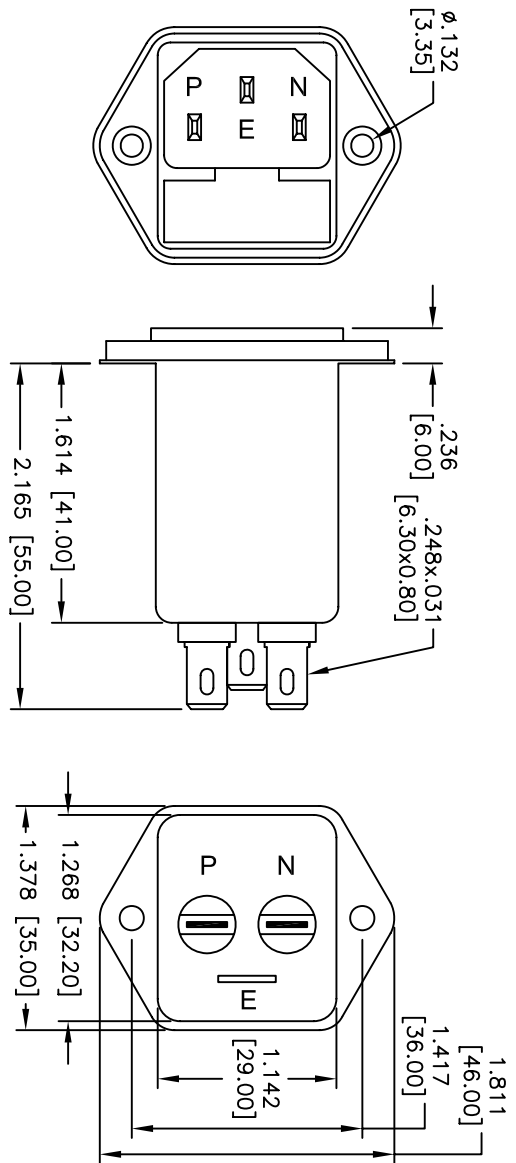


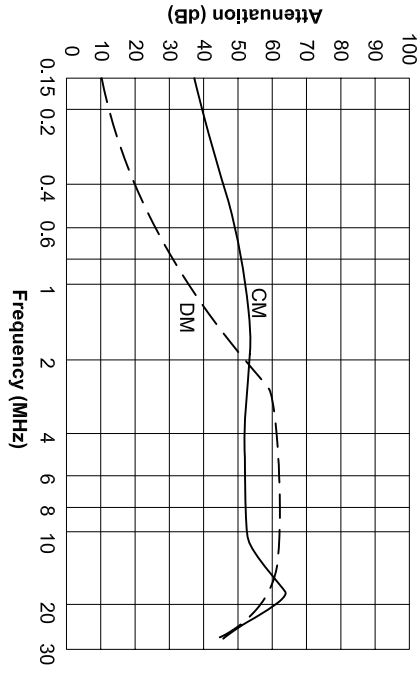
Rev	AWO #	Description	Date	Appr
-		RELEASED	6/16/05	

APPROVED: _____

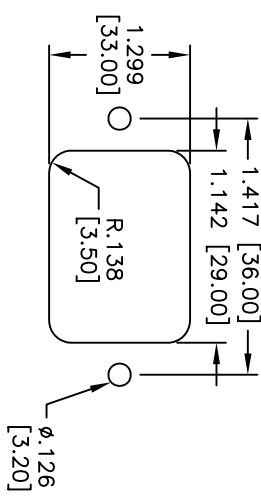
DATE: _____ TITLE: _____



Insertion Loss in dB (Measured in 50Ω systems, as IEC / cispr. No. 17)



RECOMMENDED
PANEL CUT-OUT



SPECIFICATIONS:

Material: Insulator: Nylon 66, glass reinforced, rated UL 94V-0
 Insulator color: Black
 Contacts: Phosphor Bronze
 Casing: Copper Alloy, Nickel plated
 Plating: Nickel over Copper underplate overall
 Electrical: Operating voltage: 120/250 VAC
 Current rating: 1 Amp max
 Insulation resistance: 3,000 Mohms min
 Dielectric withstanding voltage: 2,000 VAC for 1 minute
 Ground capacitance: 2.2 nF
 Leakage current: 0.5 mA max
 Temperature Rating: Operating temperature: -25°C to +70°C
 Environmental: Lead free, RoHS compliant



ADAM TECH

909 Rahway Avenue, Union, NJ 07083
 Phone: 908-687-5000 Fax: 908-687-5710

EMIRFI POWER FILTER, FUSED
 INLET SOCKET W/FLANGE MOUNTING

UNLESS OTHERWISE SPECIFIED ALL DIMENSIONS ARE INCHES [MM]		TITLE	
TOLERANCES: EXCEPT AS NOTED	INCHES	EMIRFI POWER FILTER, FUSED	
.X ± .10	ØX ± .10	SIZE	PART NO.
.XX ± .020	ØXX ± .015	X	PLF-1DZZR
.XXX ± .015	ØXXX ± .010	REF:	SCALE: NTS
APPROVALS	DATE	SHEET 1 OF 1	
DRAWN	SS	REV.	
CHECKED			
APPROVED			