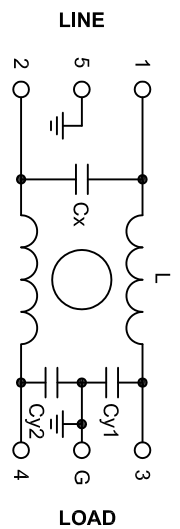
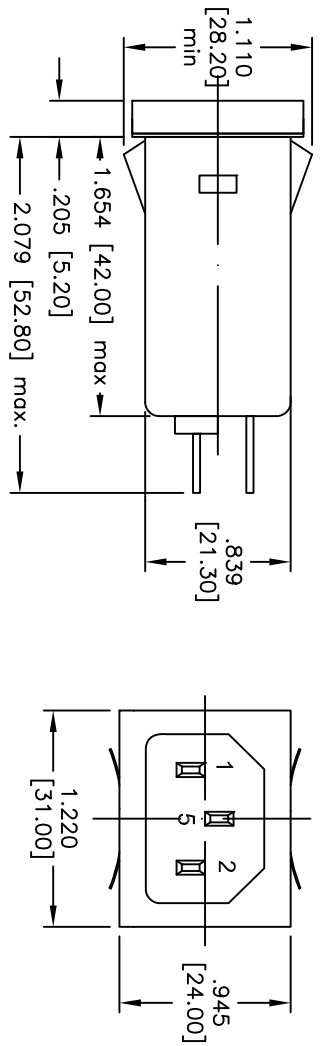
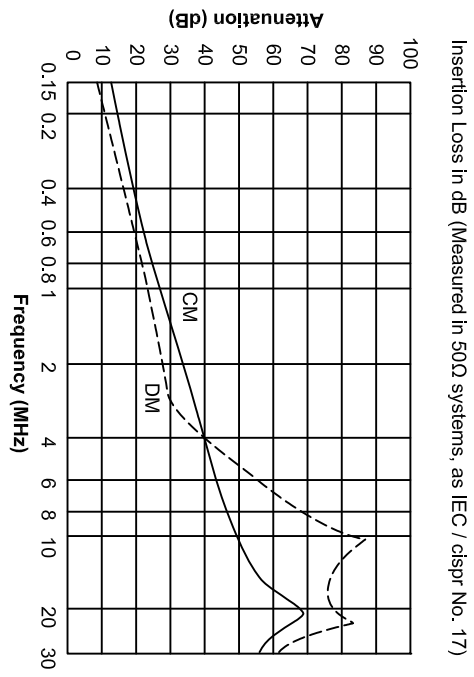


Rev	AWO #	Description	Date	Appr
-	10658	RELEASED	10/27/10	

APPROVED: _____
 DATE: _____ TITLE: _____



L = 2 x 0.38 mH
 Cx = 0.1µF
 Cy1 = Cy2 = 2 x 4700 pF



Attenuation (dB)

Frequency (MHz)

SPECIFICATIONS:

Material:
 Insulator: Nylon 66, glass reinforced, rated UL 94V-0
 Insulator color: Black
 Contacts: Phosphor Bronze
 Casing: Copper Alloy, Nickel plated
 Plating:
 Nickel over Copper underplate overall

Electrical:
 Operating voltage: 250 VAC
 Current rating: 10 Amps max
 Leakage Current: (250V/50Hz): 0.5mA max.
 Test Voltage:
 Line to Ground: 1500V AC for 1 min.
 Line to Line: 1500 VDC for 1 min.
 Insulation resistance:
 Line to Ground: 5000 Mohms min.
 Line to Line: 6000 Mohms min.
 Environmental:
 Lead free, RoHS compliant

UNLESS OTHERWISE SPECIFIED ALL DIMENSIONS ARE INCHES [MM]	
TOLERANCES: EXCEPT AS NOTED	
INCHES	HOLDS
.X ± .10	ØX ± .10
.XX ± .020	ØXX ± .015
.XXX ± .015	ØXXX ± .010
APPROVALS	DATE
DRAWN DY	10/27/10
CHECKED	
APPROVED	

ADAM TECH
 909 Rahway Avenue, Union, NJ 07083
 Phone: 908-687-5000 Fax: 908-687-5710

TITLE: EMIRFI POWER FILTER, 10 AMP
 INLET SOCKET W/FLANGE MOUNTING

SIZE: X PART NO.: PLF-10DDZ2C
 REF: S00004C SCALE: NTS SHEET 1 OF 1

