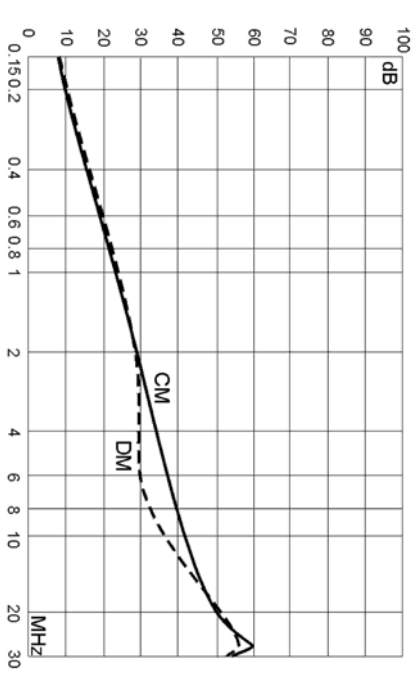
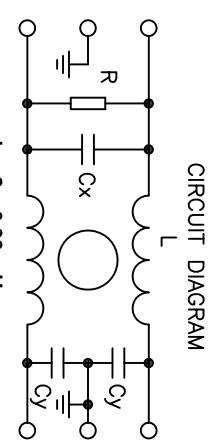
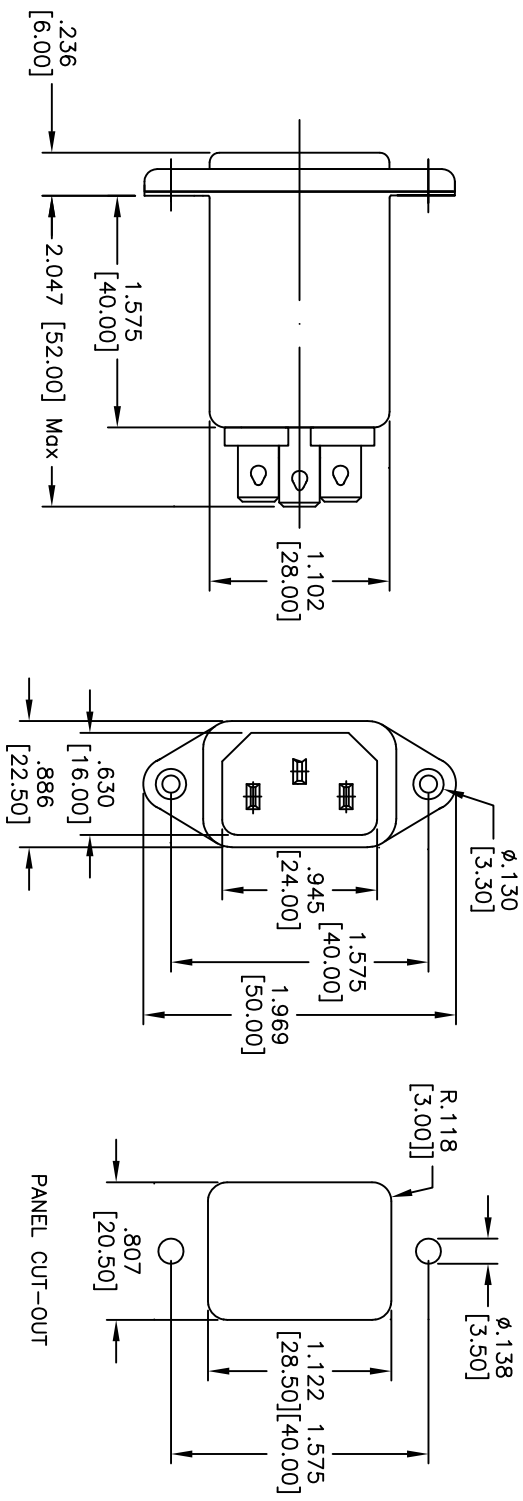


Rev	AWO #	Description	Date	Appr
-		RELEASED	5/17/10	

APPROVED: _____
 DATE: _____ TITLE: _____



SPECIFICATIONS:
 Material: Insulator: Nylon 66, glass reinforced, rated UL 94V-0
 Insulator color: Black
 Contacts: Phosphor Bronze
 Casing: Copper Alloy, Nickel plated
 Plating: Nickel over Copper underplate overall
 Electrical: Operating voltage: 125/250 VAC
 Current rating: 10 Amps max
 Test Voltage: Line to Ground: 1500V AC for 1 min.
 Line to Line: 1500 VDC for 1 min.
 Insulation resistance: 3000 Mohms min.
 Leakage current: 0.3 mA max
 Temperature Rating: Operating temperature: -25°C to +85°C
 Environmental: Lead free, RoHS compliant

ADAM TECH
 909 Railway Avenue, Union, NJ 07083
 Phone: 908-687-5000 Fax: 908-687-5710

EMIRFI POWER FILTER
INLET SOCKET W/FLANGE MOUNTING

UNLESS OTHERWISE SPECIFIED ALL DIMENSIONS ARE INCHES [MM]		TOLERANCES: EXCEPT AS NOTED	
INCHES		HOLDS	
.X	\pm .10	ϕ X	\pm .10
.XX	\pm .020	ϕ XXX	\pm .015
.XXX	\pm .015	ϕ XXXX	\pm .010
APPROVALS		DATE	
DRAWN	DY	5/17/10	
CHECKED			
APPROVED			
SIZE	PART NO.	REF:	SCALE:
X	PLF-10DD210	S0000AC	NIS
REV.		SHEET	1 OF 1