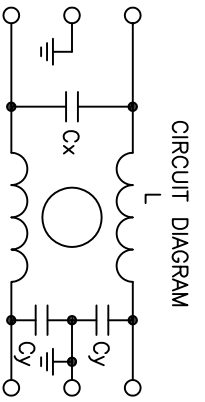
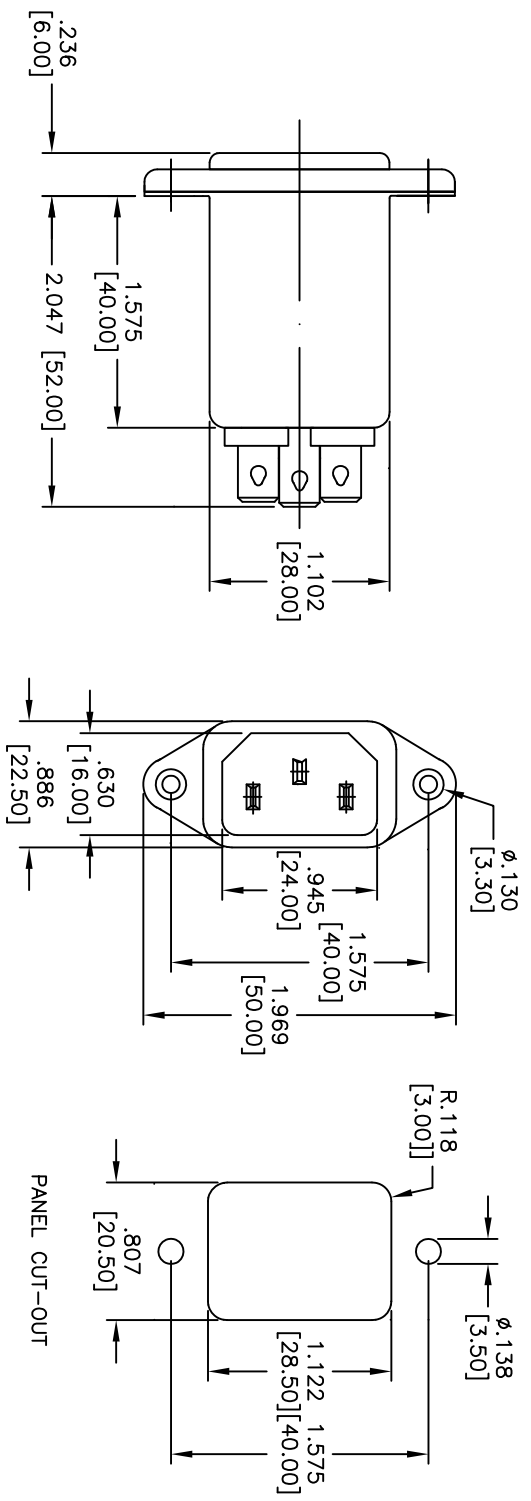
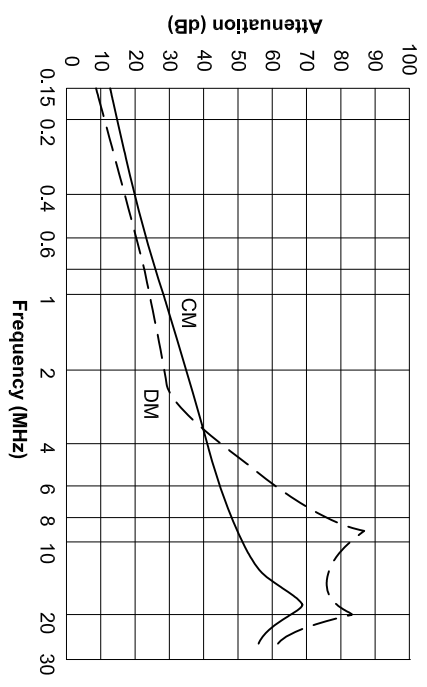


APPROVED: _____
 DATE: _____ TITLE: _____

Rev	AWO #	Description	Date	Appr
-		RELEASED	6/15/05	
A		REDRAWN	11/11/09	



$L = 2 \times 0.38 \text{ mH}$
 $Cx = 0.1 \mu\text{F}$
 $Cy = 2 \times 4700 \text{ pF}$



Insertion Loss in dB (Measured in 50Ω systems, as IEC / dispr No. 17)

SPECIFICATIONS:

Material: Insulator: Nylon 66, glass reinforced, rated UL 94V-0
 Insulator color: Black
 Contacts: Phosphor Bronze
 Casing: Copper Alloy, Nickel plated
 Plating: Nickel over Copper underplate overall
 Electrical: Operating voltage: 125/250 VAC
 Current rating: 10 Amps max
 Test Voltage: Line to Ground: 1500V AC for 1 min.
 Line to Line: 1500 VDC for 1 min.
 Insulation resistance: 3000 Mohms min.
 Leakage current: 0.5 mA max
 Temperature Rating: Operating temperature: -25°C to +70°C
 Environmental: Lead free, RoHS compliant

A

Environmental: Lead free, RoHS compliant

UNLESS OTHERWISE SPECIFIED
 ALL DIMENSIONS ARE INCHES [MM]
 TOLERANCES: EXCEPT AS NOTED

INCHES	MILLIMETERS
.X	±.10
.XX	±.020
.XXX	±.015
.XXX	±.010

APPROVALS

DATE	DATE
SS	6/15/05

ADAM TECH
 909 Rahway Avenue, Union, NJ 07083
 Phone: 908-687-5000 Fax: 908-687-5710

TITLE: EMIRFI POWER FILTER
 INLET SOCKET W/FLANGE MOUNTING

SIZE	PART NO.	REV.
X	PLF-10DDZ2	A

REF: S0000AC SCALE: NTS SHEET 1 OF 1