

6

5

4

3

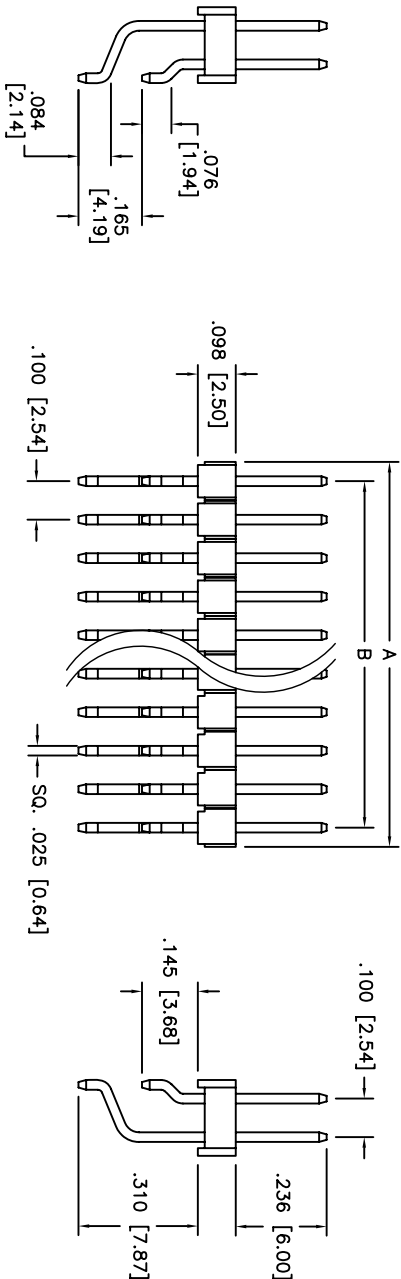
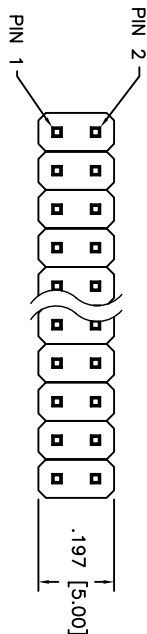
2

1

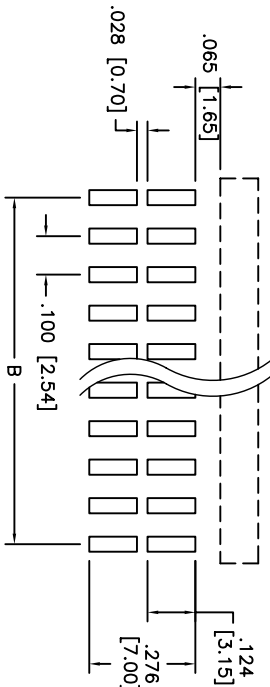
| Rev | AWO # | Description | Date | Appr |
|-----|-------|-------------|--------|------|
| - | | RELEASED | 4/5/05 | |

APPROVED: _____

DATE: _____ TITLE: _____



Positions: 2 thru 80
 A = .100 [2.54] x No. of Positions
 B = .100 [2.54] x No. of Spaces



RECOMMENDED PCB LAYOUT

SPECIFICATIONS:

- Material: Nylon 6T, glass reinforced, rated UL 94V-0
- Insulator color: Black
- Contacts: Brass
- Plating: Gold flash over Nickel underplate overall
- Electrical:
 - Operating voltage: 250 VAC max
 - Current rating: 3 Amps max
 - Contact resistance: 20 mohms max
 - Insulation resistance: 5,000 Mohms min @ 500 VDC
 - Dielectric withstanding voltage: 1,000 VAC for 1 minute
- Temperature Rating:
 - Operating temperature: -55°C to +105°C
- Environmental:
 - Lead free, RoHS compliant
- Recommended soldering temp: 260°C for 5 seconds



ADAM TECH

909 Rahway Avenue, Union, NJ 07083
 Phone: 908-687-5000 Fax: 908-687-5710

TITLE: .100 [2.54] DUAL ROW PIN HEADER
 RIGHT ANGLE, SURFACE MOUNT

| | | | | | |
|---|--------|-----------------|--------|-------|--------------|
| UNLESS OTHERWISE SPECIFIED ALL DIMENSIONS ARE INCHES [MM] TOLERANCES: EXCEPT AS NOTED | | INCHES | | HOLDS | |
| .X | ± .10 | ØX | ± .10 | | |
| .XX | ± .020 | ØXXX | ± .015 | | |
| .XXX | ± .015 | ØXXXX | ± .010 | | |
| APPROVALS | DATE | | | | |
| DRAWN | SS | 4/5/05 | | | |
| CHECKED | | | | | |
| APPROVED | | | | | |
| REF: | SIZE | PART NO. | SCALE: | NTS | SHEET 1 OF 1 |
| | X | PH2RA-XX-UA-SMT | | | |

6

5

4

3

2

1