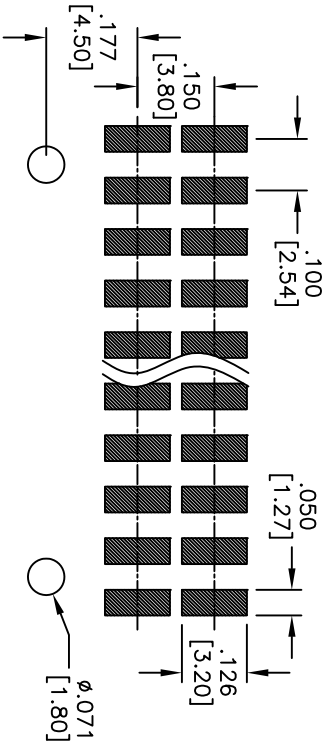
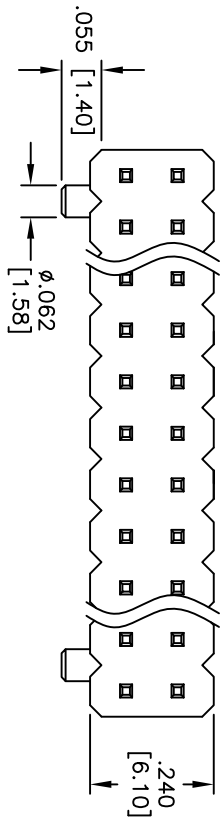
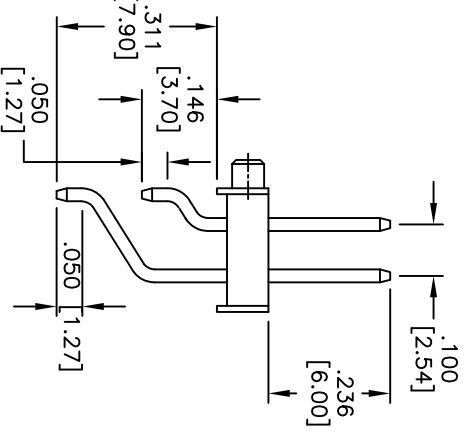
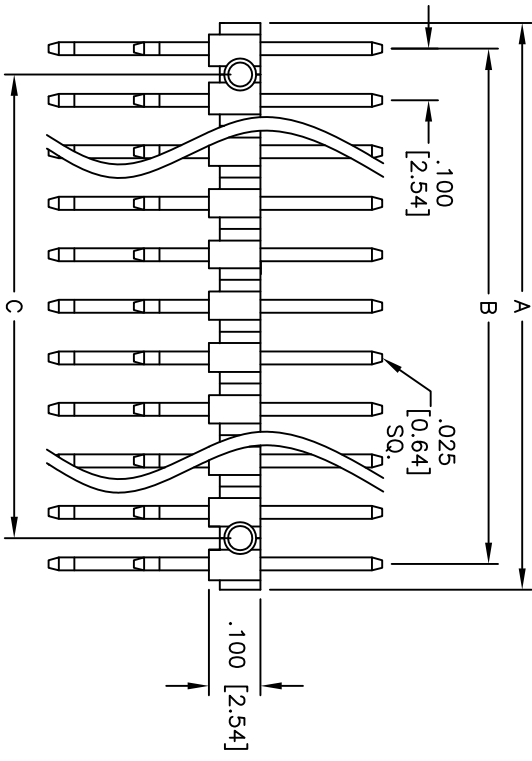


Rev	AWO #	Description	Date	Appr
-		RELEASED	10/18/10	

APPROVED: _____
 DATE: _____ TITLE: _____



RECOMMENDED PCB LAYOUT



SPECIFICATIONS:

- Material: Nylon 6T, glass reinforced, rated UL 94V-0
- Insulator color: Black
- Contacts: Brass
- Plating: Tin over Copper underplate overall.
- Electrical:
 - Current rating: 3 Amp max
 - Contact resistance: 20 mohms max
 - Insulation resistance: 1,000 Mohms min
 - Dielectric withstanding voltage: 600 VAC for 1 minute
- Temperature Rating:
 - Operating temperature: -40°C to +105°C
- Environmental:
 - Lead free, RoHS compliant
 - Recommended soldering temp: 260°C for 5 seconds

Positions: 6 thru 60
 A = .100 [2.54] x No. of Positions per row
 B = .100 [2.54] x No. of Spaces
 C = .100 [2.54] x No. of Spaces - .100 [2.54]

ADAM TECH

909 Rahway Avenue, Union, NJ 07083
 Phone: 908-687-5000 Fax: 908-687-5710

.100 [2.54] DUAL ROW PIN HEADER
 RIGHT ANGLE, SMT, TIN PLATED

UNLESS OTHERWISE SPECIFIED ALL DIMENSIONS ARE INCHES [MM]		TOLERANCES: EXCEPT AS NOTED	
INCHES	HOLES	INCHES	HOLES
.X ± .10	ØX ± .10	.XX ± .020	ØXX ± .015
.XXX ± .015	ØXXX ± .010		
APPROVALS		DATE	
DRAWN	AY	10/18/10	
CHECKED	AW	10/18/10	
APPROVED			

SIZE	PART NO.	REV.
X	PH2RA-XX-TA-SMT-P	-
REF: S0002T	SCALE: NTS	SHEET 1 OF 1

