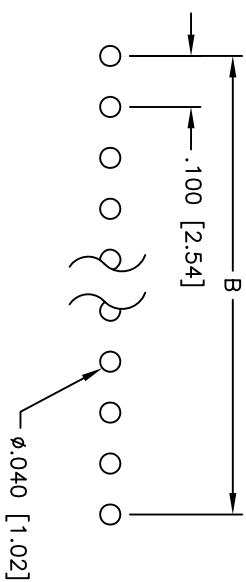
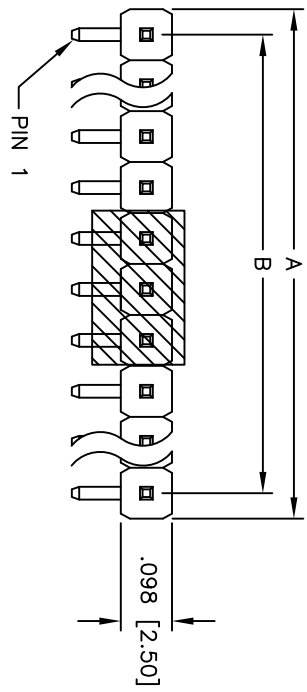
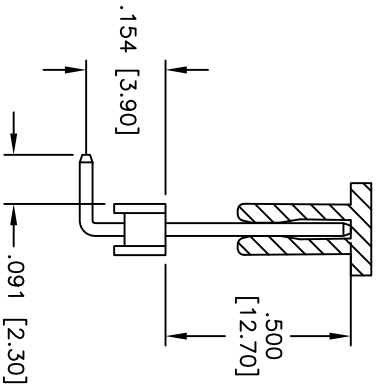
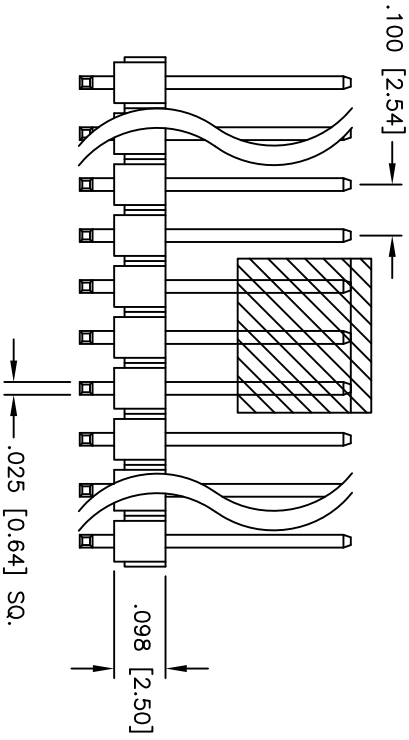


Rev	AWO #	Description	Date	Appr
-		RELEASED	7/08/11	

APPROVED: _____
 DATE: _____ TITLE: _____



RECOMMENDED PCB LAYOUT



SPECIFICATIONS:

- Material: Hi-temp thermoplastic, rated UL 94V-0
- Insulator color: Black
- Contacts: Brass
- Plating: Tin over Copper underplate overall.
- Electrical:
 - Current rating: 3 Amps max
 - Contact resistance: 20 mohms max
 - Insulation resistance: 5,000 Mohms min @ 500 VDC
 - Dielectric withstanding voltage: 500 VAC for 1 minute
- Temperature Rating:
 - Operating temperature: -55°C to +105°C
- Environmental:
 - Lead free, RoHS compliant
- Recommended soldering temp: 260°C for 5 seconds

Positions: 1 thru 40
 A = .100 [2.54] x No. of Positions
 B = .100 [2.54] x No. of Spaces

PACKAGED ON TAPE & REEL

UNLESS OTHERWISE SPECIFIED
 ALL DIMENSIONS ARE IN INCHES [MM]
 TOLERANCES: EXCEPT AS NOTED

INCHES	HOLES
.X ± .10	ØX ± .10
.XX ± .020	ØXX ± .015
.XXX ± .015	ØXXX ± .010

ADAM TECH
 909 Rahway Avenue, Union, NJ 07083
 Phone: 908-687-5000 Fax: 908-687-5710

DRAWN	DY	7/08/11	SIZE	PART NO.	REV.
CHECKED			X	PH1RB-XX-T-.500/.090-PP-TR-HT	-
APPROVED			REF:	S00059T	SCALE: NTS
			SHEET 1 OF 1		



6 5 4 3 2 1

A B C D