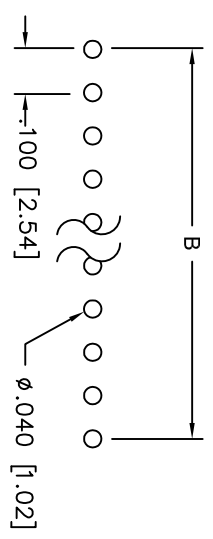
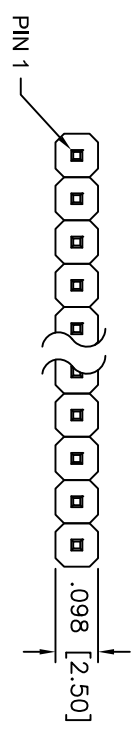
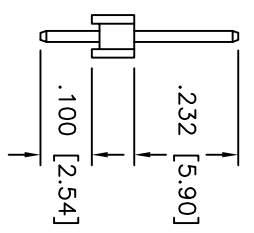
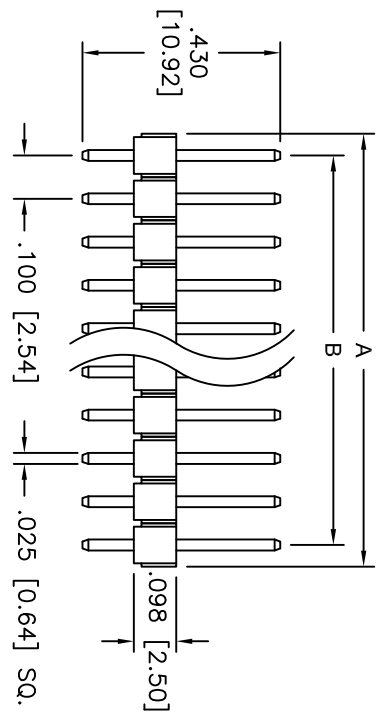


Rev	AWO #	Description	Date	Appr
-	7871	RELEASED	7/23/10	

APPROVED: _____
 DATE: _____ TITLE: _____



RECOMMENDED
PCB LAYOUT



SPECIFICATIONS:
 Material: Insulator: Hi-temp thermoplastic, glass reinforced, rated UL 94V-0
 Insulator color: Black
 Contacts: Brass
 Plating: Tin over Copper underplate overall

A = .100 [2.54] X No. of Positions.
 B = .100 [2.54] X No. of Spaces.
 1 THRU 40 PINS AVAILABLE

Electrical:
 Operating voltage: 250 VAC max
 Current rating: 3 Amps max
 Insulation resistance: 5000 Mohms min @ 500 VDC
 Dielectric withstanding voltage: 500 VAC for 1 minute
Temperature Rating:
 Operating temperature: -55°C to +105°C
Environmental:
 Lead free, RoHS compliant.
 Recommended soldering temp: 260°C for 5 sec.

ADAM TECH

909 Rahway Avenue, Union, NJ 07083
 Phone: 908-687-5000 Fax: 908-687-5710

TITLE: PIN HEADER, SINGLE ROW, .100 PITCH
 STRAIGHT, .232 MATING / .100 TAIL, HI-TEMP

UNLESS OTHERWISE SPECIFIED ALL DIMENSIONS ARE INCHES [MM]	
TOLERANCES: EXCEPT AS NOTED	
.X INCHES	±.10
.XX	±.020
.XXX	±.015
Ø.X	±.10
Ø.XX	±.015
Ø.XXX	±.010
APPROVALS	DATE
DRAWN AY	7/23/10
CHECKED AH	7/23/10
APPROVED	

SIZE X	PART NO. PH1-XX-T-.100 / .430-HT	REV. -
REF: S00039T	SCALE: NTS	SHEET 1 OF 1



6 5 4 3 2 1