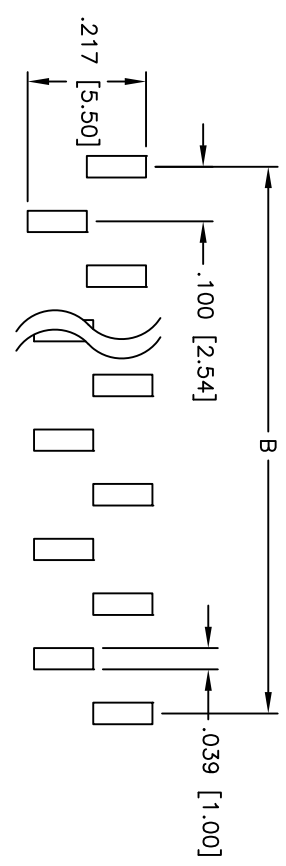
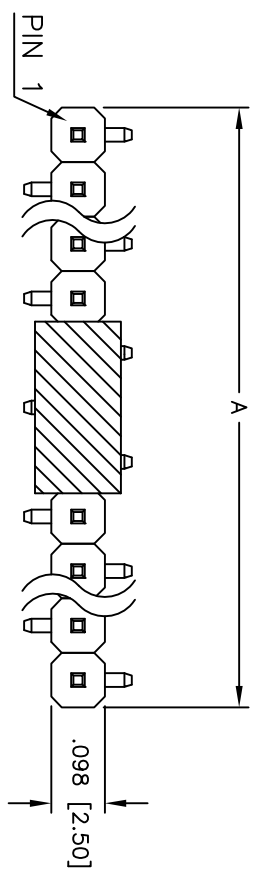
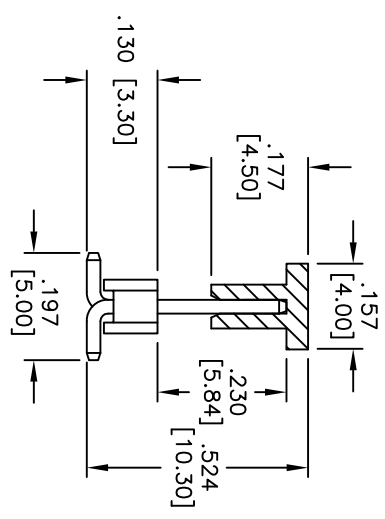
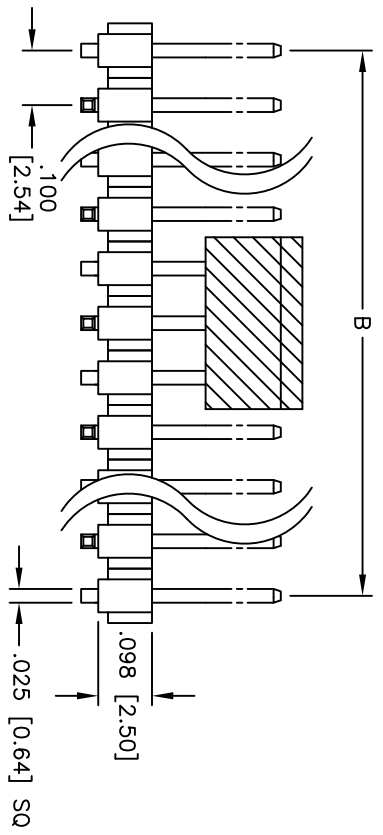


Rev	AWO #	Description	Date	Appr
-		RELEASED	7/22/10	

APPROVED: _____
 DATE: _____ TITLE: _____



Recommended PCB Layout



SPECIFICATIONS:

- Material: Nylon 6T, glass reinforced, rated UL 94V-0
- Insulator color: Black
- Contacts: Brass
- Plating: 30u" Gold flash over Nickel underplate on contact area, Tin over copper underplate on tails.
- Electrical:
 - Operating voltage: 250 VAC max
 - Current rating: 3 Amps max
 - Contact resistance: 20 mohms max
 - Insulation resistance: 5,000 Mohms min @ 500 VDC
 - Dielectric withstanding voltage: 500 VAC for 1 minute
 - Temperature Rating: Operating temperature: -55°C to +105°C
- Environmental: Lead free, RoHS compliant
- Recommended soldering temp: 260°C for 5 seconds

PACKAGED ON TPAE & REEL

A = .100 [2.54] x No. of Spaces per Row + .086 [2.19]
 B = .100 [2.54] x No. of Spaces

ADAM TECH

909 Rahway Avenue, Union, NJ 07083
 Phone: 908-687-5000 Fax: 908-687-5710

UNLESS OTHERWISE SPECIFIED ALL DIMENSIONS ARE INCHES [MM]		TOLERANCES: EXCEPT AS NOTED	
.X	± .10	ØXX	± .10
.XX	± .020	ØXXX	± .015
.XXX	± .015	ØXXXX	± .010
APPROVALS		DATE	
DRAWN	AY	7/22/10	
CHECKED	AH	7/22/10	
APPROVED			
TITLE		PART NO.	
.100 [2.54] SINGLE ROW PIN HEADER, SMT, TYPE A, PICK & PLACE CAPE, 30U" SEL GOLD PLATED		PH1-XX-SG-SMT-A-230-30-PP-T/R	
REF: S00069T		SCALE: NTS	SHEET 1 OF 1

