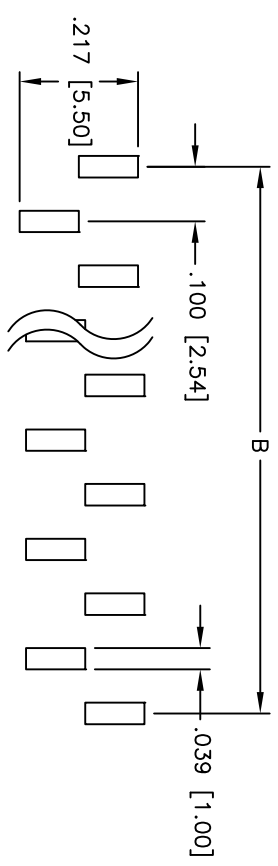
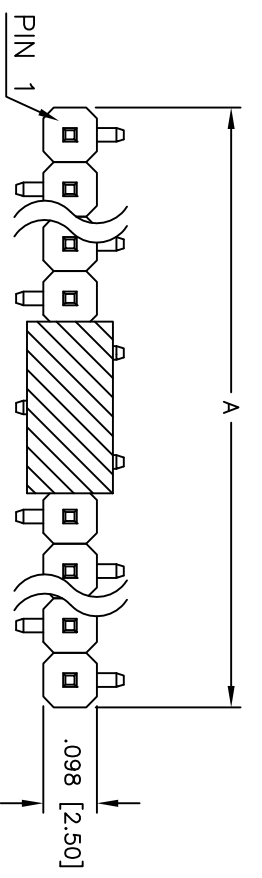
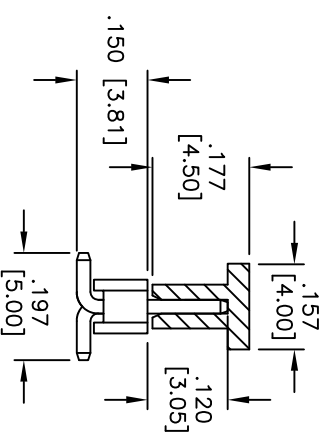
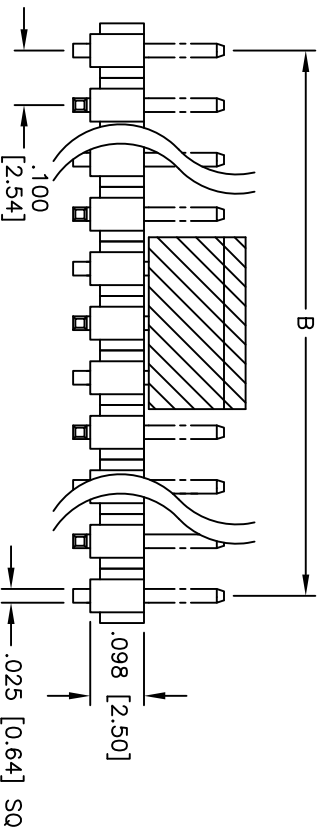


Rev	AWO #	Description	Date	Appr
-		RELEASED	12/3/10	

APPROVED: \_\_\_\_\_  
 DATE: \_\_\_\_\_ TITLE: \_\_\_\_\_



Recommended PCB Layout



**SPECIFICATIONS:**

- Material: Insulator: Hi-temp thermoplastic, rated UL 94V-0
- Insulator color: Black
- Contacts: Brass
- Plating: 10u" Gold flash over Nickel underplate on contact area, Tin over copper underplate on tails.
- Electrical: Operating voltage: 250 VAC max
- Current rating: 3 Amps max
- Contact resistance: 20 Mohms max
- Insulation resistance: 5,000 Mohms min @ 500 VDC
- Dielectric withstanding voltage: 500 VAC for 1 minute
- Temperature Rating: Operating temperature: -55°C to +105°C
- Environmental: Lead free, RoHS compliant
- Recommended soldering temp: 260°C for 5 seconds

A = .100 [2.54] x No. of Spaces per Row + .086 [2.19]  
 B = .100 [2.54] x No. of Spaces

**ADAM TECH**

909 Railway Avenue, Union, NJ 07083  
 Phone: 908-687-5000 Fax: 908-687-5710

UNLESS OTHERWISE SPECIFIED ALL DIMENSIONS ARE INCHES [MM] TOLERANCES: EXCEPT AS NOTED		TITLE	
.X ± .10	ØXX ± .10	.100 [2.54] SINGLE ROW PIN HEADER, SMT, TYPE A	
.XX ± .020	ØXXX ± .015	PICK & PLACE GAPE, 10U" SEL GOLD PLATED	
.XXX ± .015	ØXXXX ± .010	PART NO. PH1-XX-SG-SMT-A-.120/.150-10-PP	
APPROVALS		SIZE	
DRAWN AY	DATE 12/3/10	X	
CHECKED AH	DATE 12/3/10	REV.	
APPROVED		REF: S00069T SCALE: NTS SHEET 1 OF 1	



6 5 4 3 2 1

A B C D