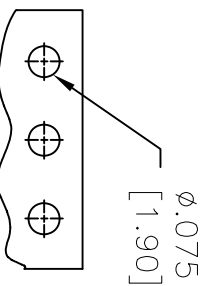
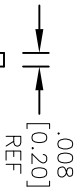
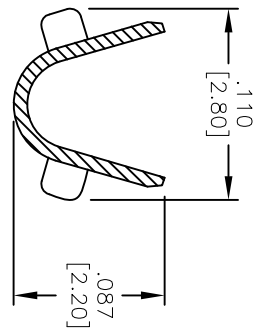
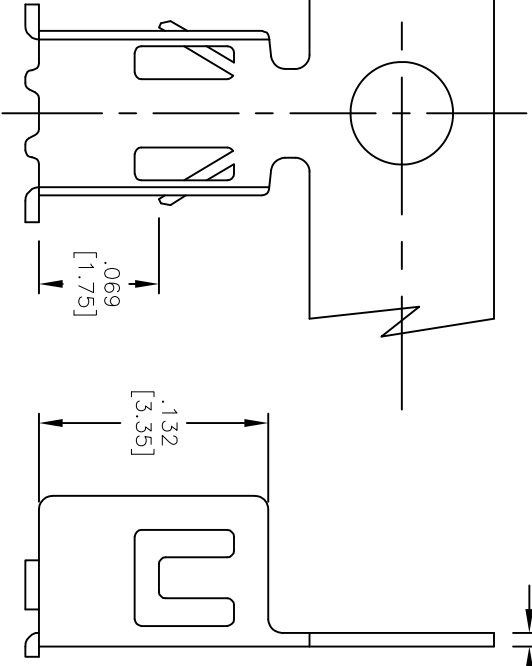
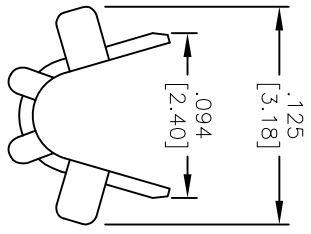
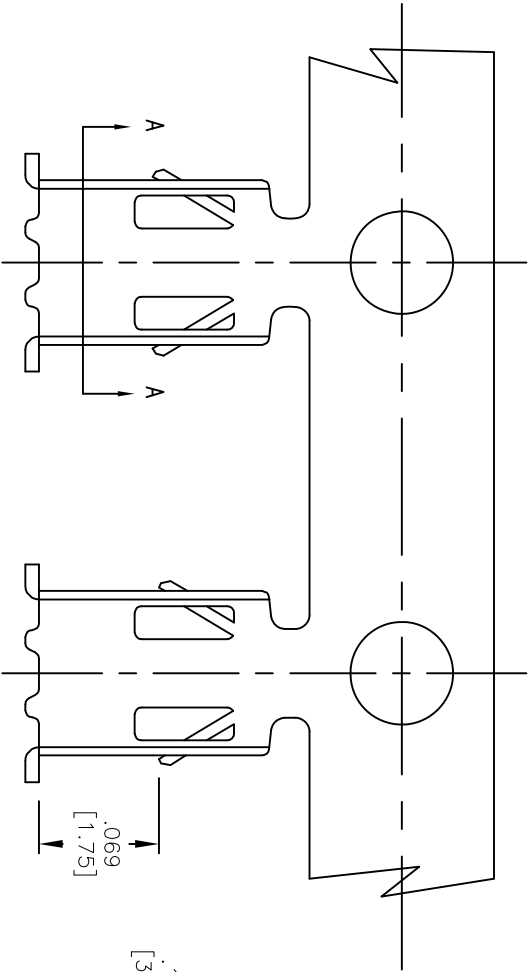
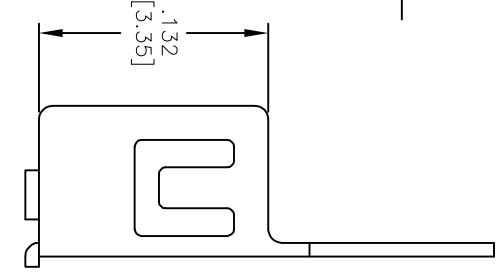


Rev	AWO #	Description	Date	Appr
-		RELEASED	1/11/11	

APPROVED: _____
 DATE: _____ TITLE: _____



RECOMMENDED PCB LAYOUT



A SPECIFICATIONS:

Material: Brass bronze
 Plating: Matte Tin Plated
 Insulation O.D.: 1.7 ~ 2.1MM
 Wire Range: AWG#18~#22
 Environmental:
 Lead free, RoHS compliant.



UNLESS OTHERWISE SPECIFIED ALL DIMENSIONS ARE INCHES [MM]	
TOLERANCES: EXCEPT AS NOTED	
INCHES	HOLDS
.X ± .10	ØXX ± .10
.XX ± .020	ØXXX ± .015
.XXX ± .015	ØXXXX ± .010
APPROVALS	DATE
DRAWN AY	1/11/11
CHECKED JL	1/11/11
APPROVED	

ADAM TECH
 909 Rahway Avenue, Union, NJ 07083
 Phone: 908-687-5000 Fax: 908-687-5710

TITLE	PCB CRIMP TERMINAL, MATTE TIN PLATED	
SIZE	PART NO.	REV.
X	PCT-014-MT	
REF: S00763T	SCALE: NTS	SHEET 1 OF 1

6 5 4 3 2 1