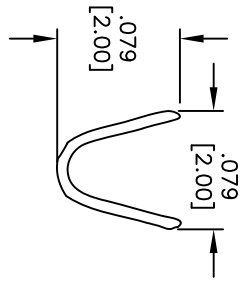
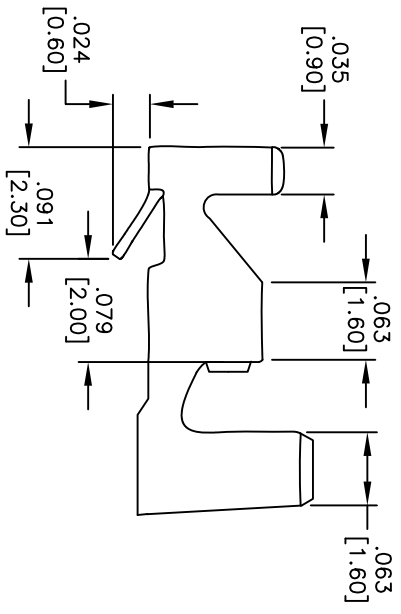
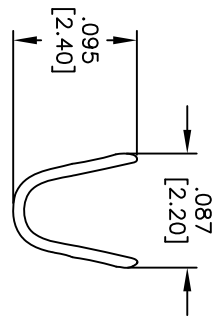
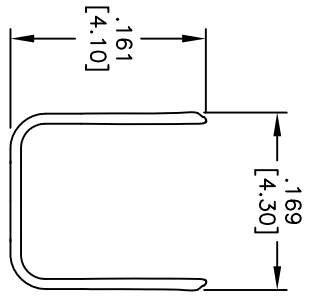
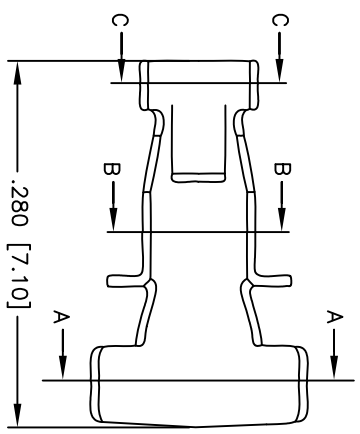


Rev	AWO #	Description	Date	Appr
-		RELEASED	9/16/10	

APPROVED: _____
 DATE: _____ TITLE: _____



SPECIFICATIONS:
 Material: _____
 Contacts: Brass, Tin plated
 Wire range: AWG#18~#22
 Insulation diameter: ϕ 3.05mm max
 P.C. Board Thickness: 1.57mm
 Recommended PCB hole diameter: ϕ 1.8mm
 Environmental: _____
 Lead free, RoHS compliant.



UNLESS OTHERWISE SPECIFIED ALL DIMENSIONS ARE INCHES [MM]	
TOLERANCES: EXCEPT AS NOTED	
INCHES	HOLDS
.X ± .10	ϕ X ± .10
.XX ± .020	ϕ XX ± .015
.XXX ± .015	ϕ XXX ± .010
APPROVALS	DATE
DRAWN AY	9/16/10
CHECKED JL	9/16/10
APPROVED	

ADAM TECH
 909 Railway Avenue, Union, NJ 07083
 Phone: 908-687-5000 Fax: 908-687-5710

PCB CRIMP TERMINAL, TIN PLATED

SIZE	PART NO.	SCALE	SHEET 1 OF 1
X	PCT-010-T	NTS	
REF: S0004T			

6 5 4 3 2 1