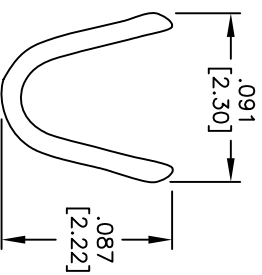
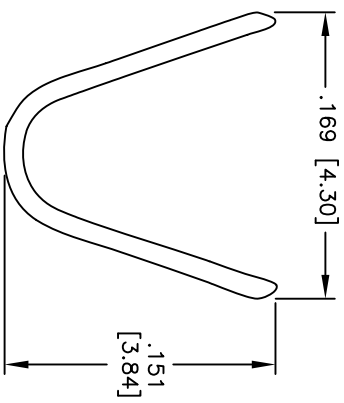
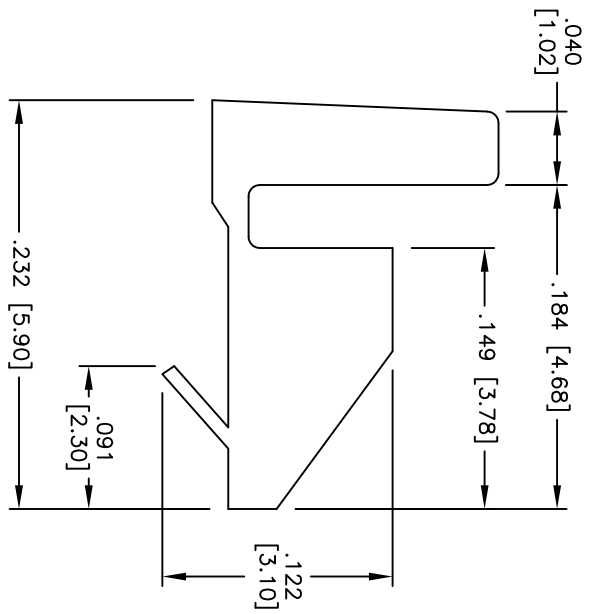


Rev	AWO #	Description	Date	Appr
-		RELEASED	9/07/10	

APPROVED: _____
 DATE: _____ TITLE: _____



SPECIFICATIONS:

Material: _____
 Contacts: Brass, 1u" Matt Tin plated
 Wire range: AWG#18~#24
 Insulation O.D.: ϕ 1.4~3.1mm
 P.C. Board Thickness: 1.6mm
 Terminal Thickness: 0.2mm
 Recommended PCB hole diameter: ϕ 1.8mm
 Electrical: _____
 Current rating: 2.5Amps DC max.
 Crimp resistance: 5 mohms max.
 Environmental: _____
 Lead free, RoHS compliant.



UNLESS OTHERWISE SPECIFIED ALL DIMENSIONS ARE INCHES [MM]	
TOLERANCES: EXCEPT AS NOTED	
INCHES	HOLDS
.X ± .10	ϕ X ± .10
.XX ± .020	ϕ XX ± .015
.XXX ± .015	ϕ XXX ± .010
APPROVALS	DATE
DRAWN	DY
CHECKED	
APPROVED	

ADAM TECH
 909 Rahway Avenue, Union, NJ 07083
 Phone: 908-687-5000 Fax: 908-687-5710

TITLE		PCB CRIMP TERMINAL, 1u" MATT TIN PLATED	
SIZE	PART NO.		
X	PCT-009-MT		
REF: S000AT	SCALE: NTS	SHEET 1 OF 1	REV. -