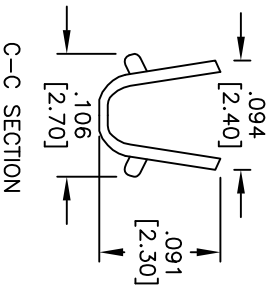
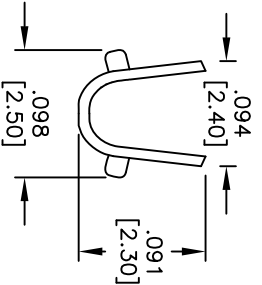
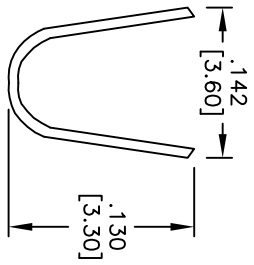
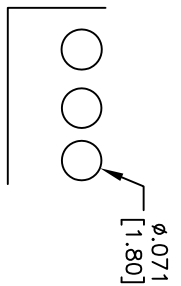
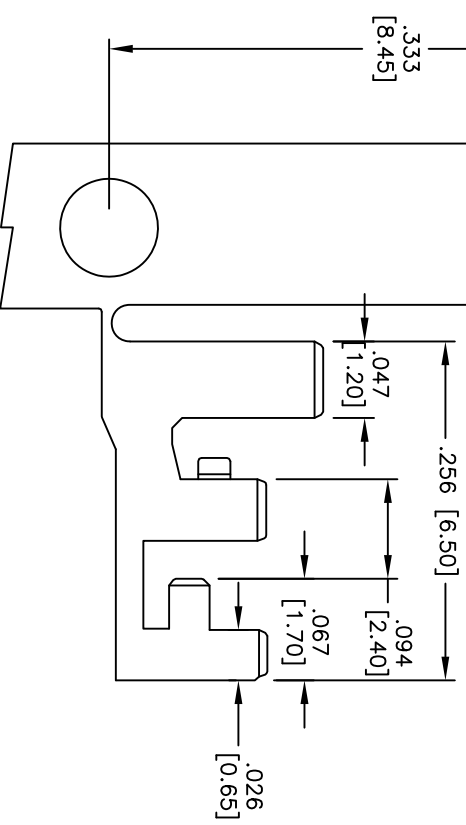
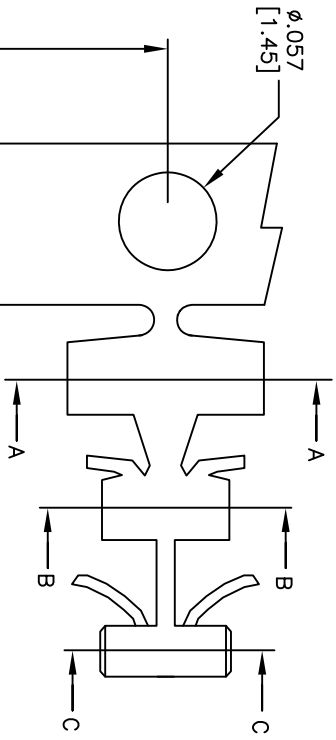


Rev	AWO #	Description	Date	Appr
-		CUSTOM DESIGN REFERENCE	5/28/10	

APPROVED: _____
 DATE: _____ TITLE: _____



SPECIFICATIONS:
 Material: Phosphor Bronze, Tin plated
 Contacts: AWG#16~#22
 Insulation O.D: 2.8~2.4mm
 PC Board Thickness: 2.00mm
 Terminal Thickness: 0.20mm
 Environmental:
 Lead free, RoHS compliant.



UNLESS OTHERWISE SPECIFIED
 ALL DIMENSIONS ARE INCHES [MM]
 TOLERANCES: EXCEPT AS NOTED
 INCHES [MM]
 .X ± .10 ØXX ± .10
 .XX ± .020 ØXXX ± .015
 .XXX ± .015 ØXXXX ± .010
 APPROVALS: _____ DATE: _____
 DRAWN: DY 5/28/10
 CHECKED: _____
 APPROVED: _____

ADAM TECH
 909 Railway Avenue, Union, NJ 07083
 Phone: 908-687-5000 Fax: 908-687-5710

TITLE: PCB CRIMP TERMINAL, TIN PLATED

SIZE	PART NO.	REV.
X	PCT-008-T	-
REF: S0037T	SCALE: NTS	SHEET 1 OF 1