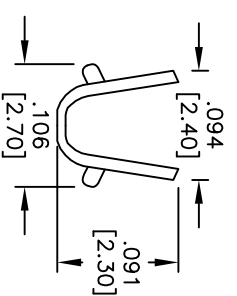
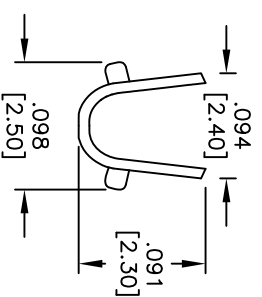
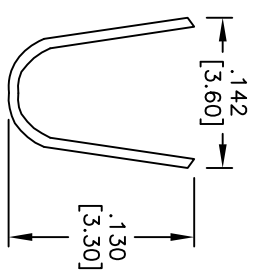
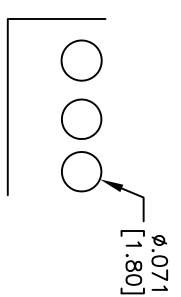
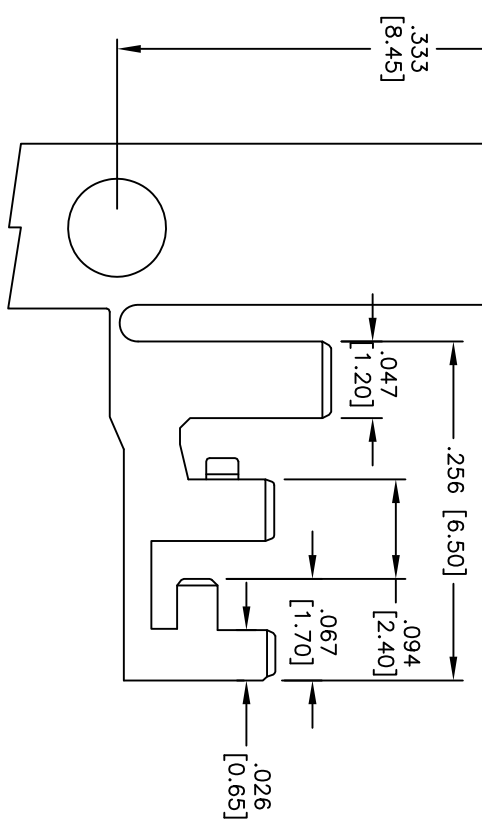
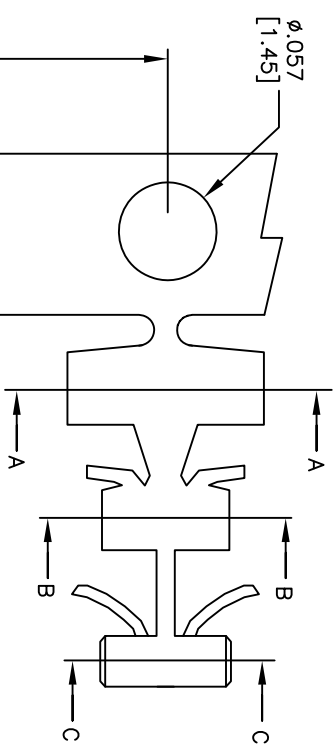


Rev	AWO #	Description	Date	Appr
-		RELEASED	11/11/10	

APPROVED: _____
 DATE: _____ TITLE: _____



SPECIFICATIONS:

Material: Phosphor Bronze, Matt Tin plated
 Contacts: AWG#16~#22
 Wire range: 2.8~2.4mm
 Insulation O.D: 2.00mm
 PC Board Thickness: 0.20mm
 Terminal Thickness: 0.20mm
 Environmental: Lead free, RoHS compliant.



UNLESS OTHERWISE SPECIFIED ALL DIMENSIONS ARE INCHES [MM]	
TOLERANCES: EXCEPT AS NOTED	
INCHES	HOLDS
.X ± .10	ØXX ± .10
.XX ± .020	ØXXX ± .015
.XXX ± .015	ØXXXX ± .010
APPROVALS	DATE
DRAWN	DY
CHECKED	
APPROVED	

ADAM TECH
 909 Rahway Avenue, Union, NJ 07083
 Phone: 908-687-5000 Fax: 908-687-5710

TITLE: **PCB CRIMP TERMINAL, MATT TIN PLATED**

SIZE: X PART NO.: PCT-008-MT
 REF: S0037T SCALE: NTS SHEET 1 OF 1