

6

5

4

3

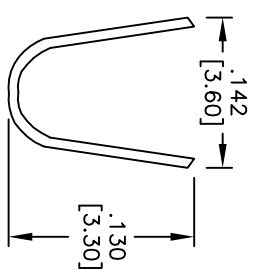
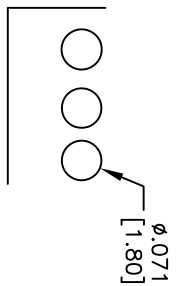
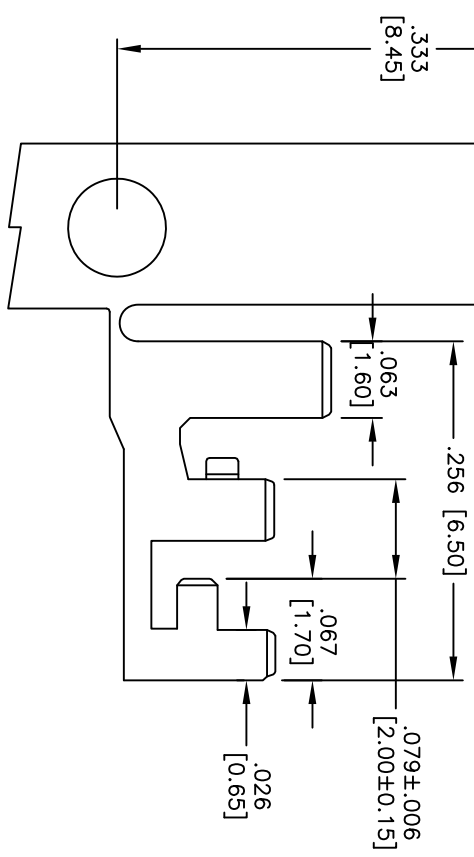
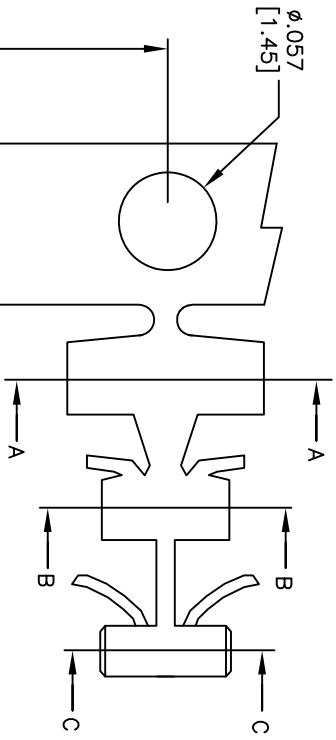
2

1

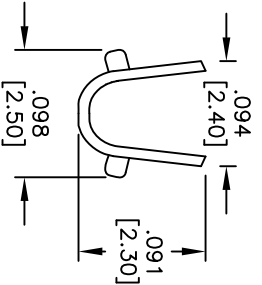
APPROVED: \_\_\_\_\_

DATE: \_\_\_\_\_ TITLE: \_\_\_\_\_

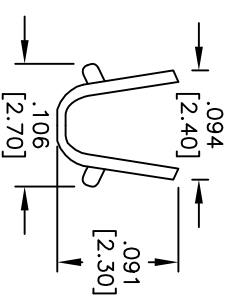
Rev	AWO #	Description	Date	Appr
-		RELEASED	1/13/10	
A		ADDED SPEC.	2/02/10	



A-A SECTION



B-B SECTION



C-C SECTION

**SPECIFICATIONS:**

Material: Contacts: Phosphor Bronze, Tin plated  
 Wire range: AWG#16~#22  
 Insulation O.D: 2.8~2.4mm  
 PC Board Thickness: 1.80mm  
 Terminal Thickness: 0.20mm  
 Environmental: Lead free, RoHS compliant.



UNLESS OTHERWISE SPECIFIED  
 ALL DIMENSIONS ARE INCHES [MM]  
 TOLERANCES: EXCEPT AS NOTED  
 INCHES: .X ± .10 ØXX ± .10  
 .XX ± .020 ØXXX ± .015  
 .XXX ± .015 ØXXX ± .010

APPROVALS: \_\_\_\_\_ DATE: \_\_\_\_\_

DRAWN	DY	1/13/10
CHECKED		
APPROVED		

**ADAM TECH**  
 909 Railway Avenue, Union, NJ 07083  
 Phone: 908-687-5000 Fax: 908-687-5710

TITLE: **PCB CRIMP TERMINAL, TIN PLATED**

SIZE	PART NO.	REV.
X	PCT-007-T	A
REF: S0037T	SCALE: NTS	SHEET 1 OF 1

6

5

4

3

2

1