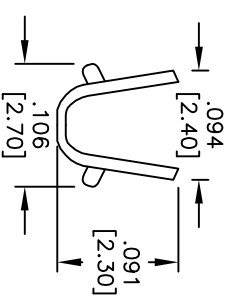
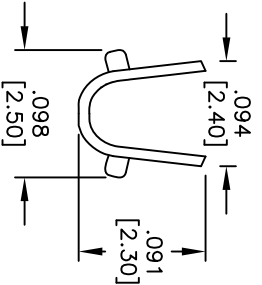
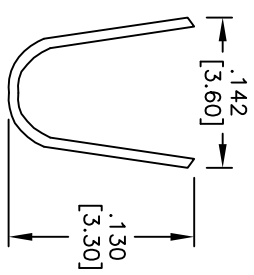
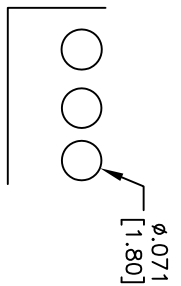
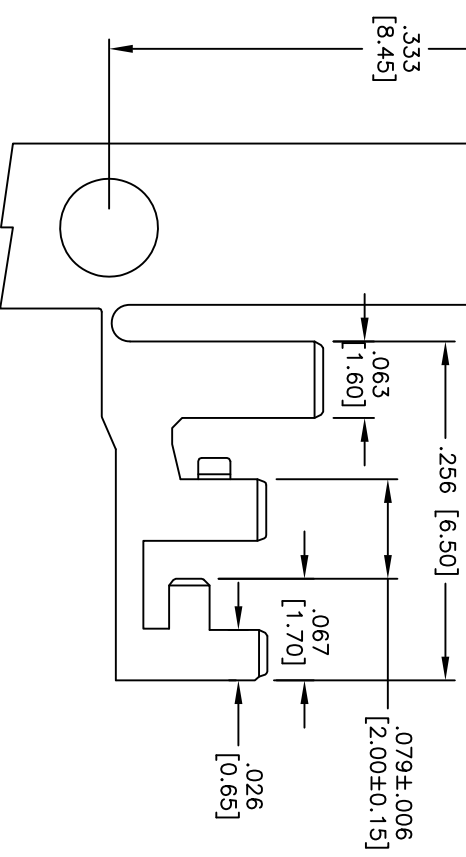
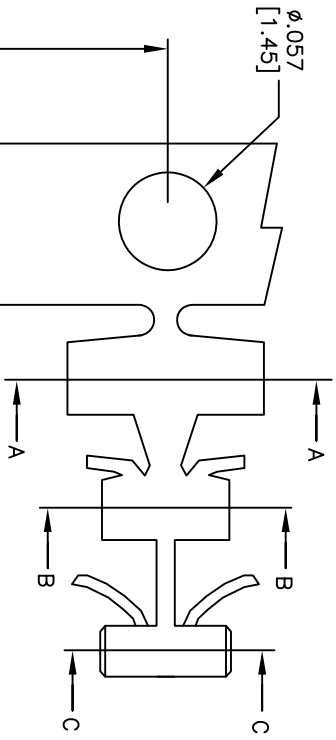


Rev	AWO #	Description	Date	Appr
-		RELEASED	10/25/10	

APPROVED: _____
 DATE: _____ TITLE: _____



UNLESS OTHERWISE SPECIFIED
 ALL DIMENSIONS ARE INCHES [MM]
 TOLERANCES: EXCEPT AS NOTED
 INCHES Holes
 .X ± .10 ØXX ± .10
 .XX ± .020 ØXXX ± .015
 .XXX ± .015 ØXXXX ± .010

APPROVALS	DATE
DRAWN	DY
CHECKED	
APPROVED	

ADAM TECH
 909 Railway Avenue, Union, NJ 07083
 Phone: 908-687-5000 Fax: 908-687-5710

TITLE: **PCB CRIMP TERMINAL, MATT TIN PLATED**

SIZE	PART NO.	REV.
X	PCT-007-MT	-

REF: S0037T SCALE: NTS SHEET 1 OF 1

SPECIFICATIONS:
 Material: Phosphor Bronze, Matt Tin plated
 Contacts: Phosphor Bronze, Matt Tin plated
 Wire range: AWG#16~#22
 Insulation O.D: 2.8~2.4mm
 PC Board Thickness: 1.80mm
 Terminal Thickness: 0.20mm
 Environmental:
 Lead free, RoHS compliant.

