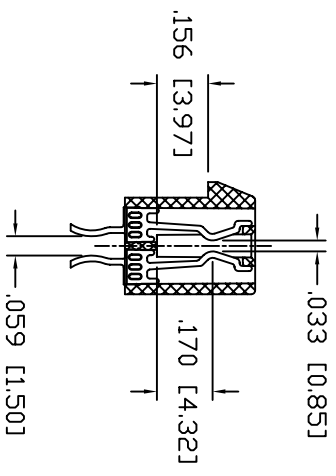
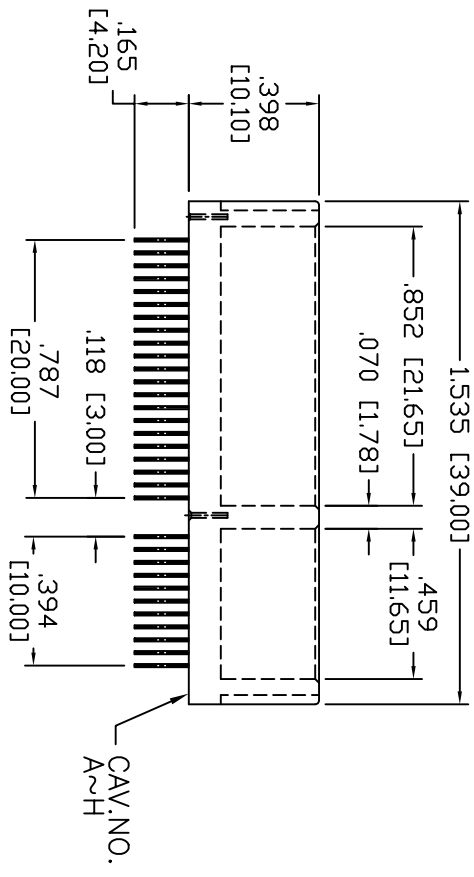
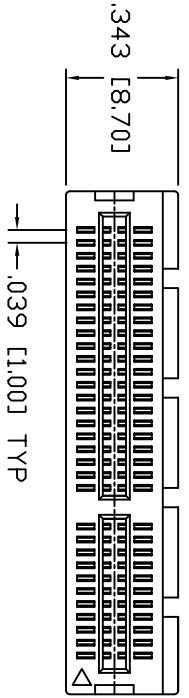


Rev	AWO #	Description	Date	Appr
-		RELEASED	02/21/05	

APPROVED: _____
 DATE: _____ TITLE: _____



SPECIFICATIONS:

- Material: Insulator: PBT, 30% glass reinforced, rated UL 94V-0
- Insulator color: White
- Contacts: Brass or Phosphor Bronze
- Plating: Gold Flash over Nickel underplate on contact area, Tin over Copper underplate on tails
- Electrical: Operating voltage: 125 VAC max
Current rating: 1.1 Amps max
Contact Resistance: 30 mohms max
Insulation resistance: 1000 Mohms min @ 500V AC
Dielectric withstanding voltage: 500 VAC for 1 minute
- Mechanical: Insertion force: 1.15N max per contact pair
Withdrawal force: 0.15N min per contact pair
Contact retention force: 4.9N min per contact
Temperature Rating: Operating temperature: -55°C to +105°C

ADAM TECH

909 Rahway Avenue, Union, NJ 07083
 Phone: 908-687-5000 Fax: 908-687-5710

TITLE: PCI EXPRESS CARD CONNECTOR, 64 PIN,
 STRADDLE MOUNT, GOLD FLASH

UNLESS OTHERWISE SPECIFIED ALL DIMENSIONS ARE INCHES [MM]		TOLERANCES: EXCEPT AS NOTED	
.X	± .10	ØX	± .10
.XX	± .020	ØXXX	± .015
.XXX	± .015	ØXXXX	± .010
APPROVALS	DATE	HOLDS	
DRAWN	SS	DATE: 02/21/05	
CHECKED		SIZE	PART NO.
APPROVED		X	PCI-E-64-U-SM-WT
REF:		SCALE:	NTS
		SHEET:	1 OF 2

6 5 4 3 2 1