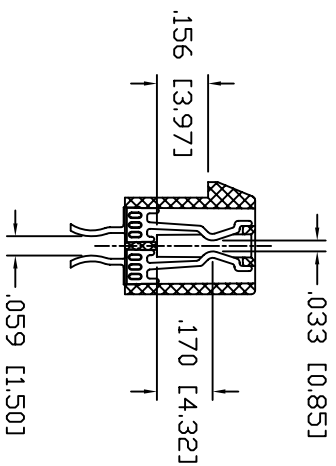
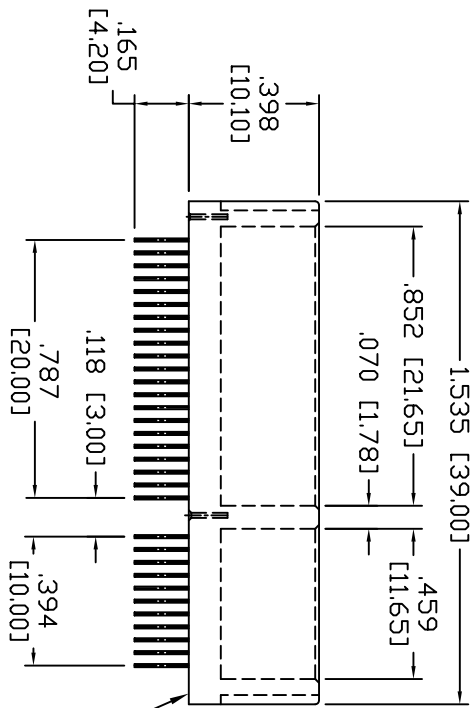
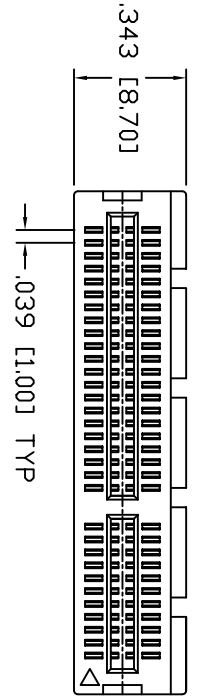


Rev	AWO #	Description	Date	Appr
-		RELEASED	02/21/05	

APPROVED: \_\_\_\_\_  
 DATE: \_\_\_\_\_ TITLE: \_\_\_\_\_



CAV. NO. A~H

**SPECIFICATIONS:**  
 Material: Insulator: PBT, 30% glass reinforced, rated UL 94V-0  
 Insulator color: Black  
 Contacts: Brass or Phosphor Bronze  
 Plating: Gold Flash over Nickel underplate on contact area, Tin over Copper underplate on tails  
 Electrical: Operating voltage: 125 VAC max  
 Current rating: 1.1 Amps max  
 Contact Resistance: 30 mohms max  
 Insulation resistance: 1000 Mohms min @ 500V AC  
 Dielectric withstanding voltage: 500 VAC for 1 minute  
 Mechanical: Insertion force: 1.15N max per contact pair  
 Withdrawal force: 0.15N min per contact pair  
 Contact retention force: 4.9N min per contact  
 Temperature Rating: Operating temperature: -55°C to +105°C

**ADAM TECH**

909 Rahway Avenue, Union, NJ 07083  
 Phone: 908-687-5000 Fax: 908-687-5710

TITLE: PCI EXPRESS CARD CONNECTOR, 64 PIN, STRADDLE MOUNT, GOLD FLASH

UNLESS OTHERWISE SPECIFIED ALL DIMENSIONS ARE INCHES [MM]		TOLERANCES: EXCEPT AS NOTED		HOLDS		DATE	
.X	± .10	ØX	± .10				
.XX	± .020	ØXXX	± .015				
.XXX	± .015	ØXXX	± .010				
APPROVALS		DATE		TITLE		REV.	
DRAWN	SS	02/21/05		PCI EXPRESS CARD CONNECTOR, 64 PIN, STRADDLE MOUNT, GOLD FLASH			
CHECKED				SIZE		PART NO.	
APPROVED				X		PCI-E-64-U-SM	
REF:		SCALE: NTS		SHEET 1 OF 2			