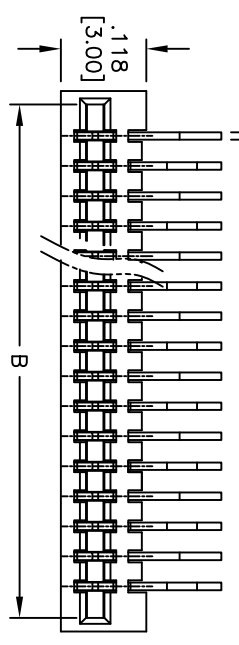
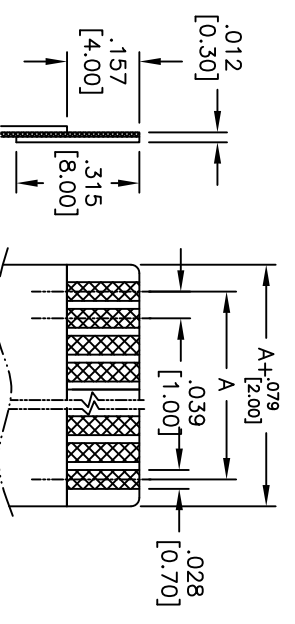
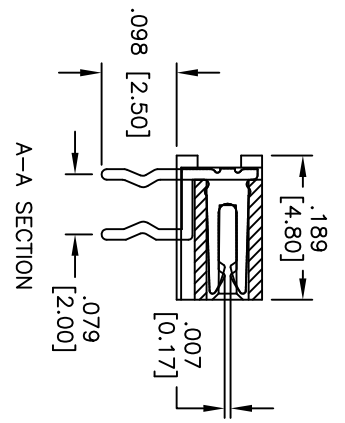
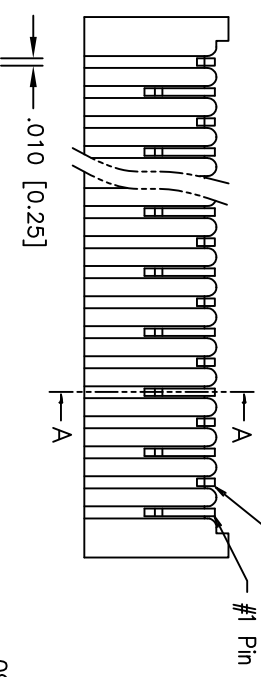
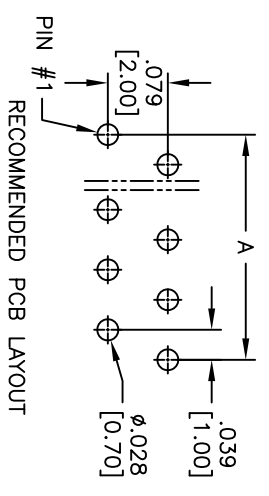
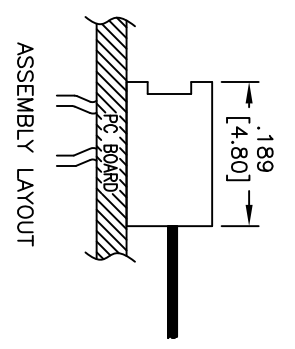
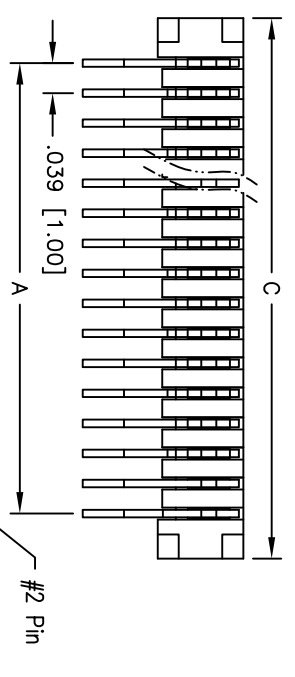


Rev	AWO #	Description	Date	Appr
-	10675	RELEASED	11/01/10	

APPROVED: _____ TITLE: _____
 DATE: _____



SPECIFICATIONS:

Material: PPS, rated UL 94V-0
 Insulator color: Black
 Contacts: Phosphor Bronze
 Plating: Tin over Copper underplate overall

Electrical:

Operating voltage: AC,DC,50V(50HZ)
 Current rating: 0.5A, AC/DC
 Contact resistance: 20 mohms max
 Insulation resistance: 800 Mohms min
 Dielectric withstanding voltage: 500 VAC for 1 minute
 Temperature Rating:
 Operating temperature: -25°C to +85°C
 Environmental:
 Lead free, RoHS compliant
 Recommended soldering temp: 235°C for 5 seconds

Positions: 4 thru 40
 A = .039 [1.00] x No. of (Positions-1)
 B = A + .083 [2.10]
 C = A + .126 [3.20]

UNLESS OTHERWISE SPECIFIED
 ALL DIMENSIONS ARE INCHES [MM]
 TOLERANCES: EXCEPT AS NOTED
 INCHES HOLEES

.X	± .10	ØX	± .10
.XX	± .020	ØXXX	± .015
.XXX	± .015	ØXXX	± .010

ADAM TECH
 909 Railway Avenue, Union, NJ 07083
 Phone: 908-687-5000 Fax: 908-687-5710

LIF FLEX CIRCUIT CONNECTOR
 SIDE ENTRY, PCB TYPE

DRAWN	DY	11/01/10
CHECKED		
APPROVED		

SIZE	PART NO.	REV.
X	PCB-CS-XX-SA	-
REF:	S0067T	SHEET 1 OF 1

