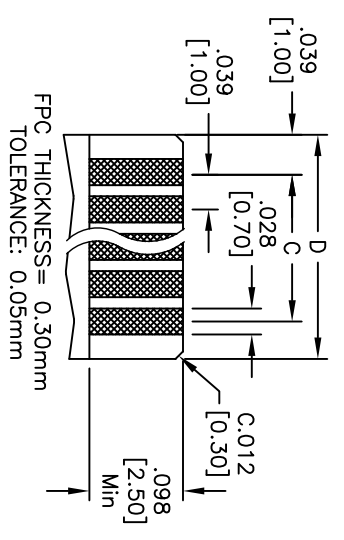
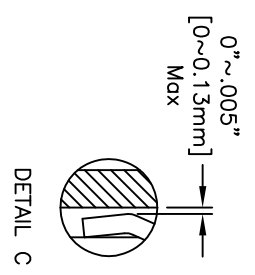
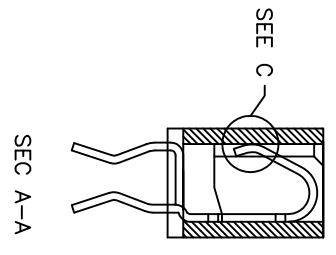
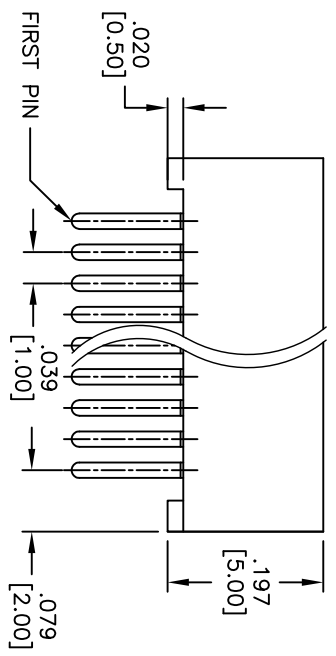
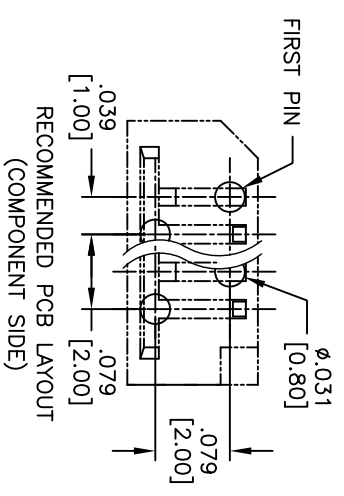
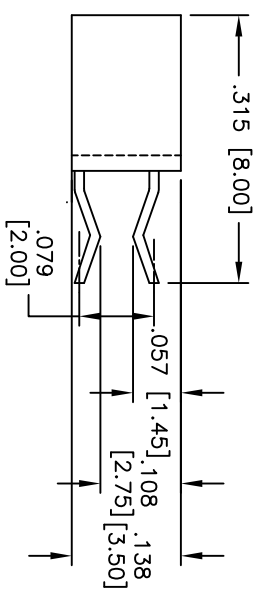
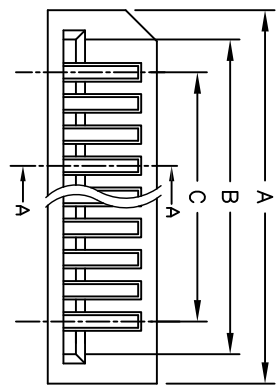


Rev	AWO #	Description	Date	Appr
-	10072	RELEASED	3/03/10	

APPROVED: _____
 DATE: _____ TITLE: _____



SPECIFICATIONS:
 Material: LCP, rated UL 94V-0
 Insulator color: Black
 Contacts: Phosphor Bronze
 Plating:
 Tin over Copper underplate overall

Electrical:
 Operating voltage: 100 VAC max
 Current rating: 0.5 Amps max
 Contact resistance: 30 mohms max initial
 Insulation resistance: 500 Mohms min
 Dielectric withstanding voltage: 500 VAC for 1 minute
 Temperature Rating:
 Operating temperature: -40°C to +85°C
 Environmental:
 Lead free, RoHS compliant
 Recommended soldering temp: 260°C for 5 seconds



Positions: 3 thru 32
 A = .039 [1.00] x No. of Spaces
 B = A + .083 [2.10]
 C = A + .157 [4.00]
 D = A + .079 [2.00]

UNLESS OTHERWISE SPECIFIED
 ALL DIMENSIONS ARE INCHES [MM]
 TOLERANCES EXCEPT AS NOTED

INCHES	HOLES
.X ± .10	ØX ± .10
.XX ± .020	ØXX ± .015
.XXX ± .015	ØXXX ± .010

ADAM TECH
 909 Railway Avenue, Union, NJ 07083
 Phone: 908-687-5000 Fax: 908-687-5710
 LIFE FLEX CIRCUIT CONNECTOR
 TOP ENTRY, .079 [2.00] ROW SPACING

DRAWN	DY	3/03/10
CHECKED		
APPROVED		

SIZE	PART NO.	REV.
X	PCB-C2-XX-T-20	
REF: S00030T	SCALE: NTS	SHEET 1 OF 1