

6

5

4

3

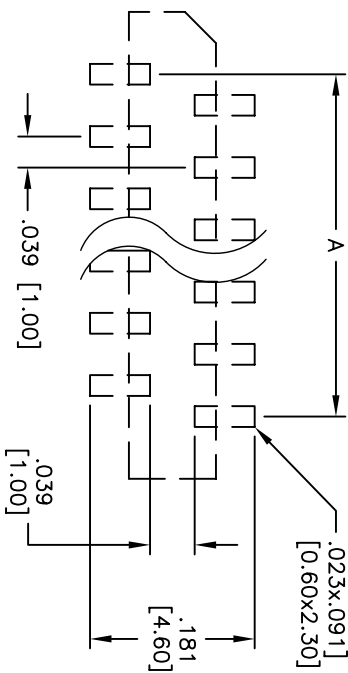
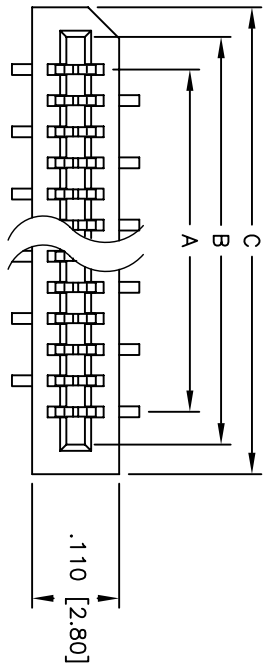
2

1

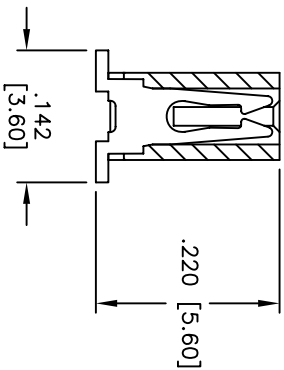
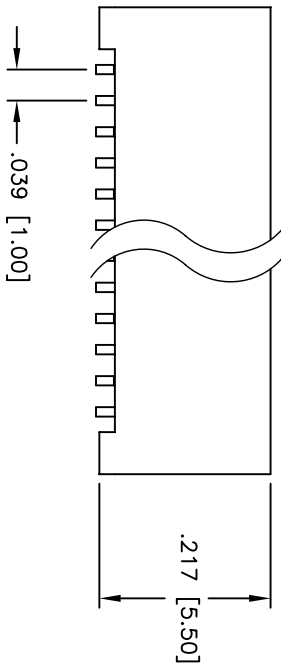
Rev	AWO #	Description	Date	Appr
-		RELEASED	3/23/05	

APPROVED: _____

DATE: _____ TITLE: _____



PCB LAYOUT



SPECIFICATIONS:

Material:

Insulator: Hi-Temp Thermo-plastic, rated UL 94V-0

Insulator color: Black

Contacts: Phosphor Bronze

Plating:

Tin over Copper underplate overall

Electrical:

Operating voltage: 100 VAC max

Current rating: 0.5 Amps max

Contact resistance: 30 mohms max initial

Insulation resistance: 500 Mohms min

Dielectric withstanding voltage: 500 VAC for 1 minute

Temperature Rating:

Operating temperature: -40°C to +85°C

Environmental:

Lead free, RoHS compliant

Recommended soldering temp: 260°C for 5 seconds



Positions: 2 thru 21
 A = .039 [1.00] x No. of Spaces
 B = A + .090 [2.30]
 C = A + .157 [4.00]

UNLESS OTHERWISE SPECIFIED
 ALL DIMENSIONS ARE IN INCHES [MM]
 TOLERANCES: EXCEPT AS NOTED

INCHES	HOLDS
.X ± .10	ØX ± .10
.XX ± .020	ØXXX ± .015
.XXX ± .015	ØXXX ± .010

APPROVALS

DATE	DATE

DRAWN	SS	3/23/05
CHECKED		
APPROVED		

ADAM TECH
 909 Rahway Avenue, Union, NJ 07083
 Phone: 908-687-5000 Fax: 908-687-5710

LIF FLEX CIRCUIT CONNECTOR
 TOP ENTRY, SMT

SIZE	PART NO.	SCALE	SHEET 1 OF 1
X	PCB-C-XX-T-SMT	NTS	
REV.			

6

5

4

3

2

1