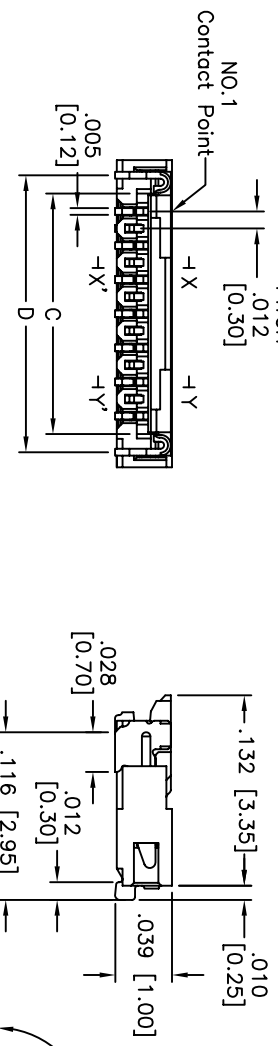
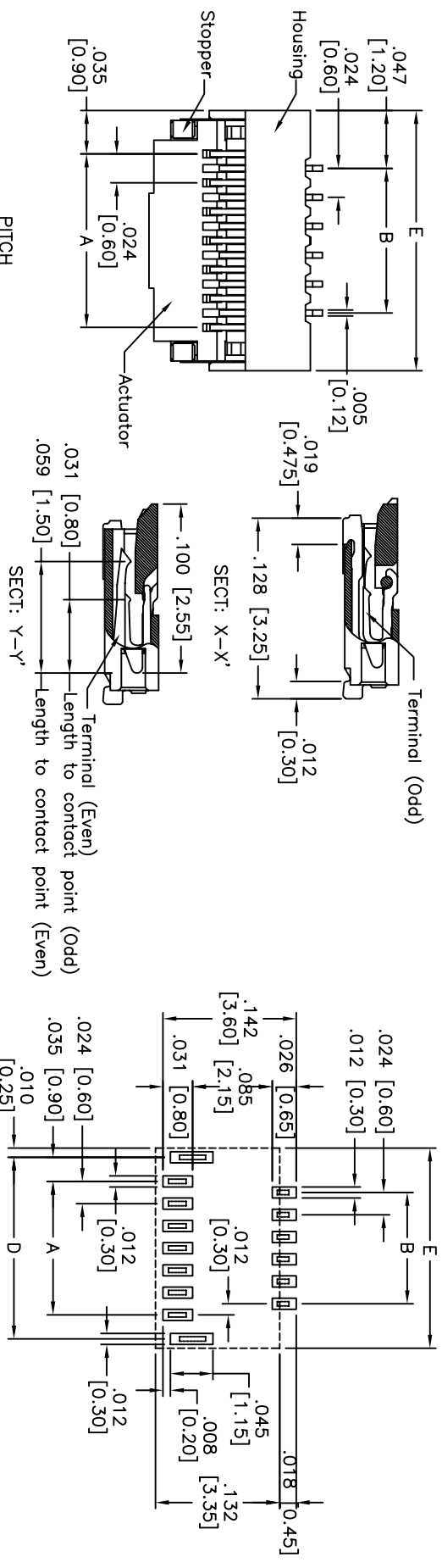


Rev	AWO #	Description	Date	Appr
-		RELEASED	10/24/08	

APPROVED: _____
 DATE: _____ TITLE: _____



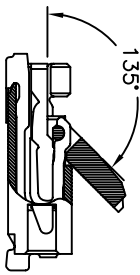
PACKAGED ON TAPE & REEL

SPECIFICATIONS:

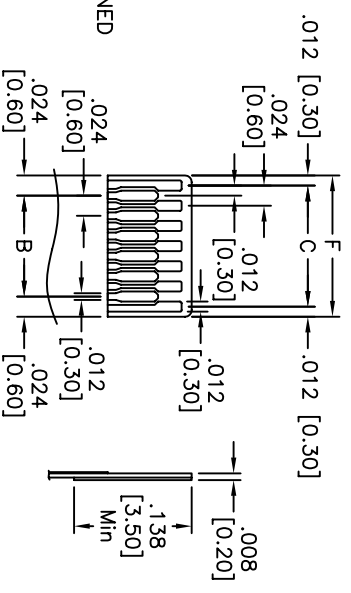
- Material: LCP, rated UL 94V-0
- Housing: LCP, UL 94V-0
- Actuator: LCP, UL 94V-0
- Terminal: Phosphor Bronze
- Stopper: Phosphor Bronze, Tin over Nickel plated.
- Plating: Tin over Copper underplate overall
- Electrical: Operating voltage: 30 VAC max, Current rating: 0.2 Amps max, Temperature Rating: Operating temperature: -25°C to +85°C
- Environmental: Lead free, RoHS compliant.
- Recommended soldering temp: 260°C for 5 sec.

Positions: 13 thru 71

- A = .012 [0.30] x No. of Spaces
- B = A - .024 [0.60]
- C = A + .025 [0.63]
- D = A + .051 [1.30]
- E = A + .071 [1.80]
- F = A + .024 [0.60]



WHEN ACTUATOR IS OPENED



FPC/FPC INSER DIRECTION
 RECOMMENDED PCB LAYOUT

ADAM TECH

909 Rahway Avenue, Union, NJ 07083
 Phone: 908-687-5000 Fax: 908-687-5710

ZIF FLEX CIRCUIT CONNECTOR
 0.30 MM PITCH, SIDE ENTRY, SMT

UNLESS OTHERWISE SPECIFIED ALL DIMENSIONS ARE IN INCHES [MM]		TITLE ZIF FLEX CIRCUIT CONNECTOR	
TOLERANCES: EXCEPT AS NOTED		PART NO. PCA-7-XX-HL-3-TR	
INCHES: .X ± .10, .XX ± .020, .XXX ± .015, .XXX ± .015		SIZE X	
HOLDS: ± .10, ± .015, ± .010		SCALE: NTS	
APPROVALS		DATE: 10/24/08	
DRAWN: DY		DATE: 10/24/08	
CHECKED		DATE	
APPROVED		DATE	
REV. 1		SHEET 1 OF 1	

