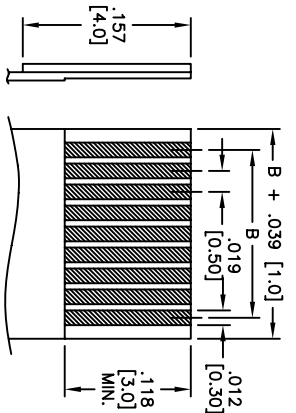
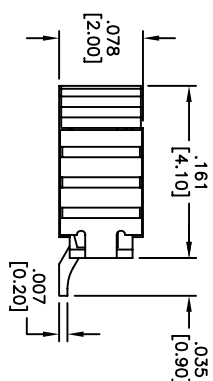
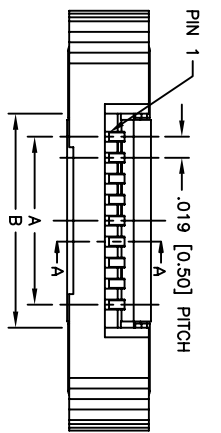
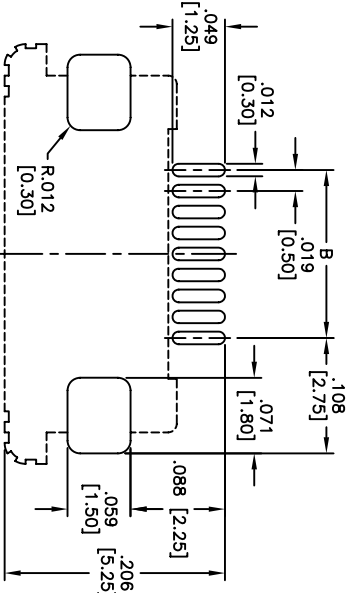
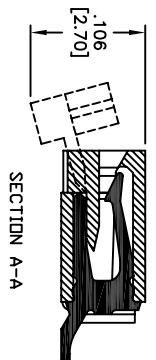
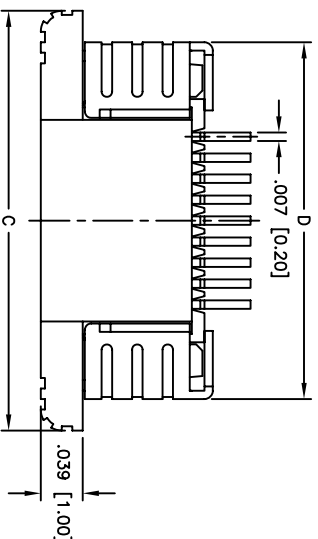


APPROVED: \_\_\_\_\_  
 DATE: \_\_\_\_\_ TITLE: \_\_\_\_\_

Rev	AWO #	Description	Date	Appr
-		RELEASED	04/19/05	
A		REDRAWN	10/10/07	



Applicable FPC

Positions: 3 thru 50  
 A = .020 [0.50] x No. of Spaces  
 B = A + .043 [1.10]  
 C = A + .236 [6.00]  
 D = A + .177 [4.50]

**SPECIFICATIONS:**  
 Material: LCP, Glass reinforced, rated UL 94V-0  
 Insulator color: Natural  
 Contacts: Phosphor Bronze  
 Plating: Tin over Copper underplate overall  
 Electrical:  
 Operating voltage: 50 VAC max  
 Current rating: 0.4 Amps max  
 Contact resistance: 30 mohms max initial  
 Insulation resistance: 500 Mohms min  
 Dielectric withstanding voltage: 500 VAC for 1 minute  
 Mechanics:  
 Insertion force: 0 oz max  
 Withdrawal force: 13 oz min  
 Temperature Rating:  
 Operating temperature: -55°C to +85°C  
 Environment:  
 Lead free, RoHS compliant.  
 Recommended soldering temp: 260°C for 5 sec.



UNLESS OTHERWISE SPECIFIED ALL DIMENSIONS ARE INCHES [MM]	
TOLERANCES: EXCEPT AS NOTED	
INCHES	HOLDS
.X ± .10	ØX ± .10
.XX ± .020	ØXX ± .015
.XXX ± .015	ØXXX ± .010
APPROVALS	DATE
DRAWN	SS
CHECKED	
APPROVED	

**ADAM TECH**  
 909 Railway Avenue, Union, NJ 07083  
 Phone: 908-687-5000 Fax: 908-687-5710

TITLE: ZIF FLEX CIRCUIT CONNECTOR  
 SIDE ENTRY, UPPER CONTACT, SMT

SIZE	PART NO.	REV.
X	PCA-6-XX-HU-3	A
REF.	SCALE: NTS	SHEET 1 OF 1