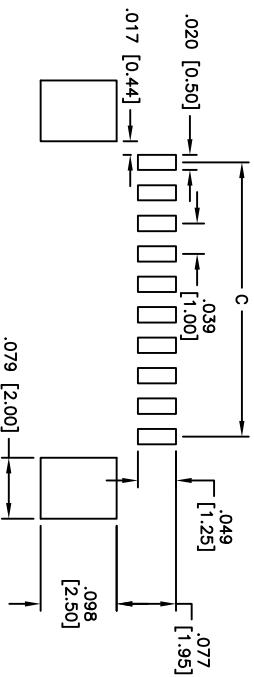
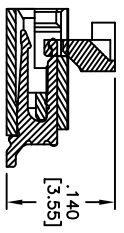
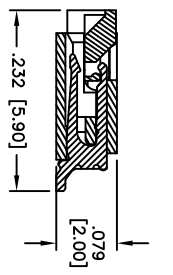
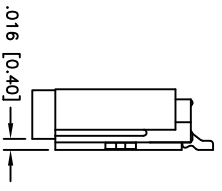
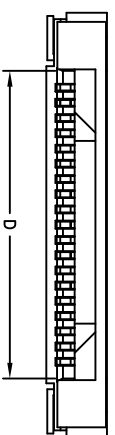
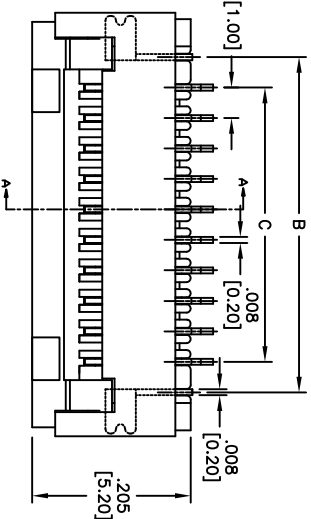
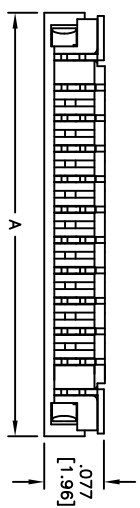


Rev	AWO #	Description	Date	Appr
-		RELEASED	9/20/10	

APPROVED: _____
 DATE: _____ TITLE: _____



RECOMMENDED PCB LAYOUT

- Positions: 4 thru 30
- A = .039 [1.00] x No. of Spaces + .232 [5.90]
 - B = .039 [1.00] x No. of Spaces + .118 [3.00]
 - C = .039 [1.00] x No. of Spaces
 - D = .039 [1.00] x No. of Spaces + .083 [2.10]

SPECIFICATIONS:

Material:
 Insulator: LCP, glass reinforced, rated UL 94V-0
 Contacts: Phosphor Bronze
Plating:
 Tin over Copper underplate overall

Electrical:
 Operating voltage: 50 VAC max
 Current rating: 0.5 Amps max
 Contact resistance: 20 mohms max
 Insulation resistance: 800 Mohms min initial
 Dielectric withstanding voltage: 500 VAC for 1 minute
Temperature Rating:
 Operating temperature: -55°C to +85°C

Environment:
 Lead free, RoHS compliant.
 Recommended soldering temp: 260°C for 5 sec.



UNLESS OTHERWISE SPECIFIED ALL DIMENSIONS ARE INCHES [MM]	
TOLERANCES: EXCEPT AS NOTED	
INCHES	
HOLES	
.X ± .10	ØX ± .10
.XX ± .020	ØXX ± .015
.XXX ± .015	ØXXX ± .010
APPROVALS	
DRAWN	AY 9/20/10
CHECKED	JL 9/20/10
APPROVED	

ADAM TECH
 909 Rahway Avenue, Union, NJ 07083
 Phone: 908-687-5000 Fax: 908-687-5710

TITLE
 ZIF FLEX CIRCUIT CONNECTOR
 SIDE ENTRY, LOWER CONTACT, SMT

SIZE	PART NO.	REV.
X	PCA-2D-XX-HL-3	-

REF: S00167T SCALE: NTS SHEET 1 OF 1