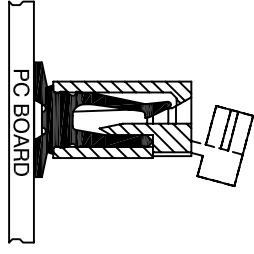
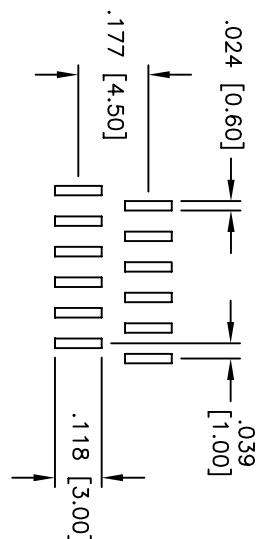
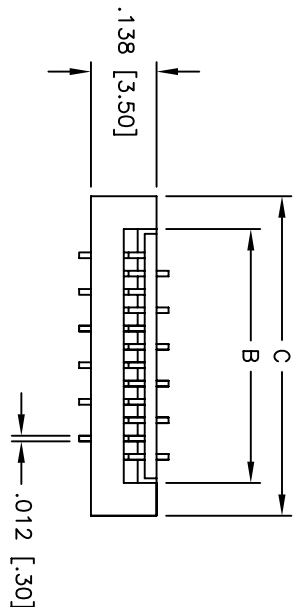
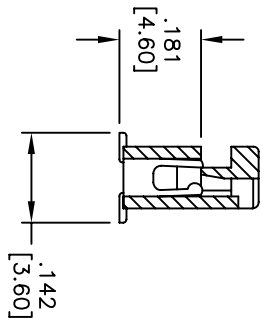
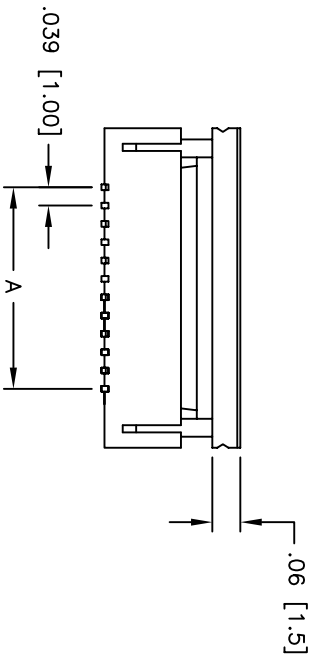


Rev	AWO #	Description	Date	Appr
-		RELEASED	3/16/05	

APPROVED: _____
 DATE: _____ TITLE: _____



VERTICAL MOUNT



SPECIFICATIONS:
 Material: Insulator: LCP, Glass reinforced, rated UL 94V-0
 Insulator color: Natural
 Contacts: Phosphor Bronze
 Plating: Tin over Copper underplate overall
 Electrical: Operating voltage: 100 VAC max
 Current rating: 0.5 Amps max
 Contact resistance: 30 mohms max initial
 Insulation resistance: 500 Mohms min
 Dielectric withstanding voltage: 500 VAC for 1 minute
 Temperature Rating: Operating temperature: -40°C to +85°C
 Environmental: Lead free, RoHS compliant
 Recommended soldering temp: 260°C for 5 seconds

Positions: 3 thru 30
 A = .039 [1.00] x No. of Spaces
 B = A + .090 [2.30]
 C = A + .280 [7.10]

UNLESS OTHERWISE SPECIFIED
 ALL DIMENSIONS ARE INCHES [MM]
 TOLERANCES: EXCEPT AS NOTED
 INCHES Holes ±.10
 .X ±.10 ØXX ±.10
 .XX ±.020 ØXXX ±.015
 .XXX ±.015 ØXXXX ±.010
 APPROVALS DATE

ADAM TECH
 909 Rahway Avenue, Union, NJ 07083
 Phone: 908-687-5000 Fax: 908-687-5710
ZIF FLEX CIRCUIT CONNECTOR
 TOP ENTRY, SMT

RECOMMENDED SOLDERING TEMP: 260°C FOR 5 SECONDS

DRAWN	SS	3/16/05
CHECKED		
APPROVED		

SIZE	PART NO.	SCALE	SHEET 1 OF 1
X	PCA-2-XX-V-3-45	NTS	

