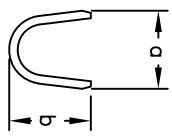
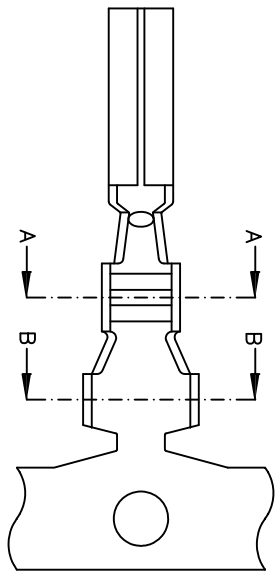
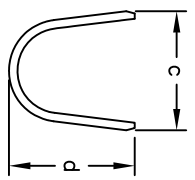
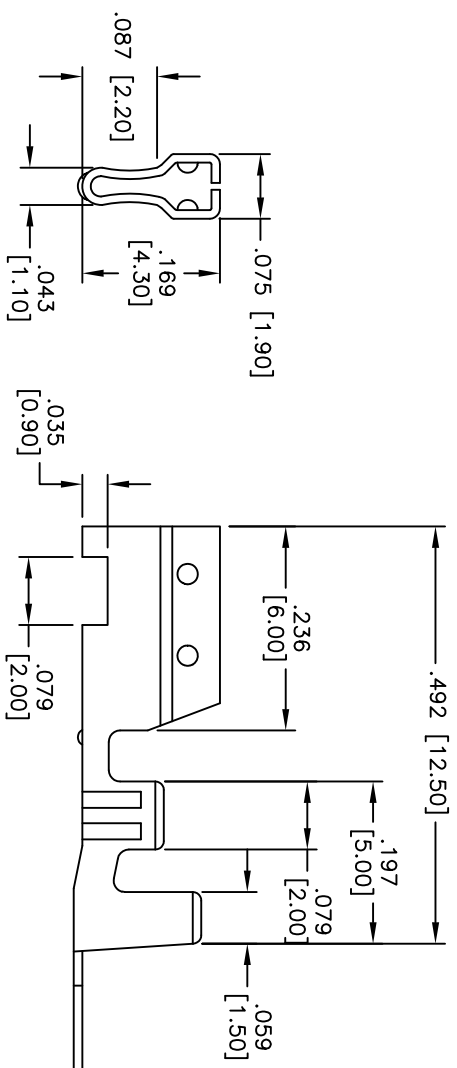


Rev	AWO #	Description	Date	Appr
-		RELEASED	8/11/10	

APPROVED: \_\_\_\_\_  
 DATE: \_\_\_\_\_ TITLE: \_\_\_\_\_



SECTION: A-A



SECTION: B-B

ADAM P/N	Wire Range	Dim.a	Dim.b	Dim.c	Dim.d
MTY-C-A-R	#18~#22	.091 [2.30]	.094 [2.40]	.138 [3.50]	.142 [3.60]
MTY-C-B-R	#16~#18	.096 [2.45]	.094 [2.40]	.157 [4.00]	.154 [3.90]

SPECIFICATIONS:  
 Material: \_\_\_\_\_  
 Contact: Brass  
 Thickness: 0.25mm  
 Plating: \_\_\_\_\_  
 Tin over Copper underplate overall  
 Electrical: \_\_\_\_\_  
 Current rating: 7A  
 Contact resistance: 10 mohms max  
 Temperature Rating: \_\_\_\_\_  
 Operating temperature: -25°C to +85°C



**ADAM TECH**  
 909 Railway Avenue, Union, NJ 07083  
 Phone: 908-687-5000 Fax: 908-687-5710

TITLE: CRIMP CONTACT

UNLESS OTHERWISE SPECIFIED	DATE	SIZE	PART NO.	REV.
ALL DIMENSIONS ARE IN INCHES [MM]	8/11/10	X	MTY-C-X-R	-
TOLERANCES: EXCEPT AS NOTED				
INCHES				
.X ± .10				
.XX ± .020				
.XXX ± .015				
.XXX ± .015				
ØXX ± .010				
ØXXX ± .010				
APPROVALS				
DRAWN	DY			
CHECKED				
APPROVED				