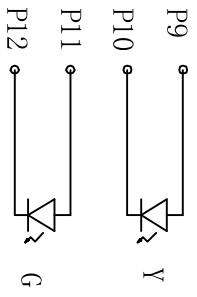
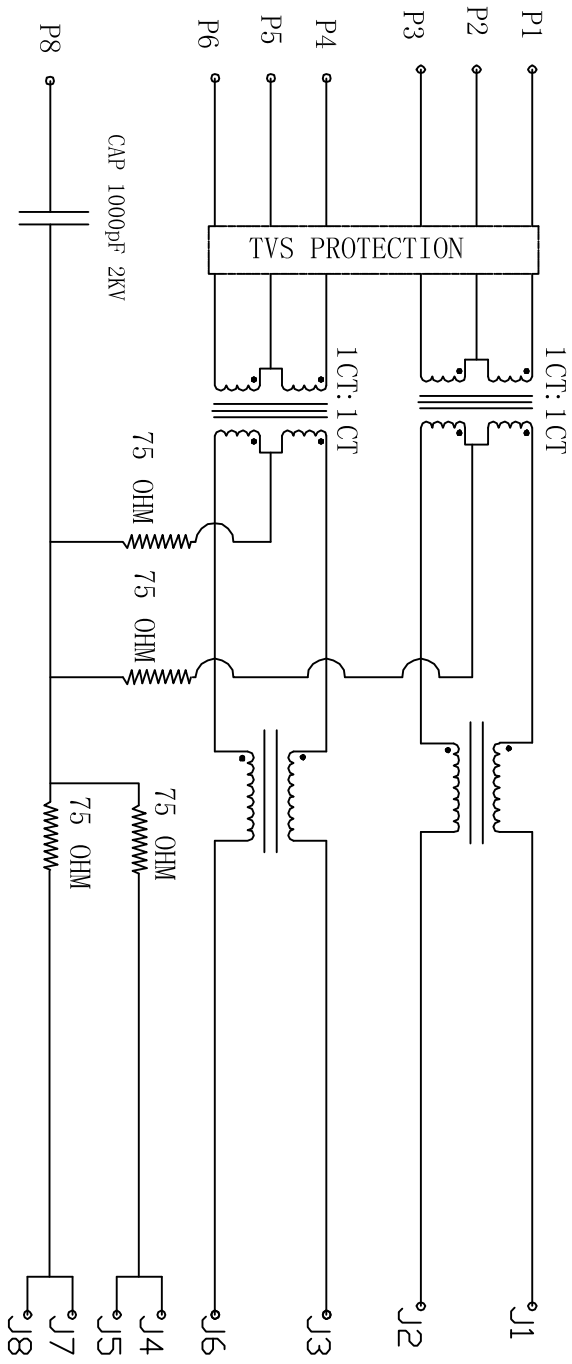


Rev	AWO #	Description	Date	Appr
		SEE SHT 1 OF 2 FOR REVISION		

APPROVED: \_\_\_\_\_

DATE: \_\_\_\_\_ TITLE: \_\_\_\_\_



**ELECTRICAL SPECIFICATIONS**

- Turns Ratio: (P1 ~ P3) : (J1 ~ J2) 1:1 ±3%  
(P4 ~ P6) : (J3 ~ J6) 1:1 ±3%
- Inductance: (P1 ~ P3) 350uH min. @ 0.1V, 100KHZ, 8mA DC Bias  
(P4 ~ P6) 350uH min. @ 0.1V, 100KHZ, 8mA DC Bias
- Leakage Inductance: P1 ~ P3 (with J1 and J2 Short): 0.35uH Max. @ 1 MHz  
P4 ~ P6 (with J3 and J6 Short): 0.35uH Max. @ 1 MHz
- Interwinding Capacitor: (P1 ~ P3) : (J1 ~ J2): 35pF max @ 1MHz  
(P4 ~ P6) : (J3 ~ J6): 35pF max @ 1mhz
- DC Resistance: (J1 ~ J2) : (J3 ~ J6): 1.2 Ohms Max.
- Return Loss: 1MHz to 30MHz: -18dB MIN  
30MHz to 60MHz: -(18-20LOG(f/30))dB MIN (WHERE f IS IN MHZ)  
60MHz to 80MHz: -12dB MIN
- Dielectric Withstanding: (P1~P3) : (J1~J2): (P4~P6) : (J3~J6) : 2250VDC
- Insertion Loss: 100KHZ TO 100MHZ : -1.2dB MAX
- Cross Talk: 1MHZ to 100MHZ: -35dB MIN
- Common to common mode attenuation: 30MHZ TO 100MHZ: -30dB TYP

**ADAM TECH**

909 Rahway Avenue, Union, NJ 07083  
Phone: 908-687-5000 Fax: 908-687-5710

MODULAR JACK GANGED, 4 PORT, 8P8C  
W/ LED1 YELLOW, LED2 GREEN

UNLESS OTHERWISE SPECIFIED ALL DIMENSIONS ARE INCHES [MM] TOLERANCES: EXCEPT AS NOTED		Holes	
.X	± .10	Ø.X	± .10
.XX	± .020	Ø.XXX	± .015
.XXX	± .015	Ø.XXX	± .010
APPROVALS		DATE	
DRAWN	DY		10/01/10
CHECKED			
APPROVED			
REF:	S00005C	SCALE:	NTS
SIZE	PART NO.	REV.	
X	MTJG-4-88TX1-FSD-PG-LG-M108		
TITLE		SHEET 2 OF 2	