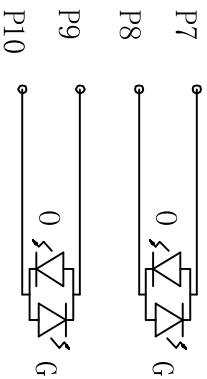
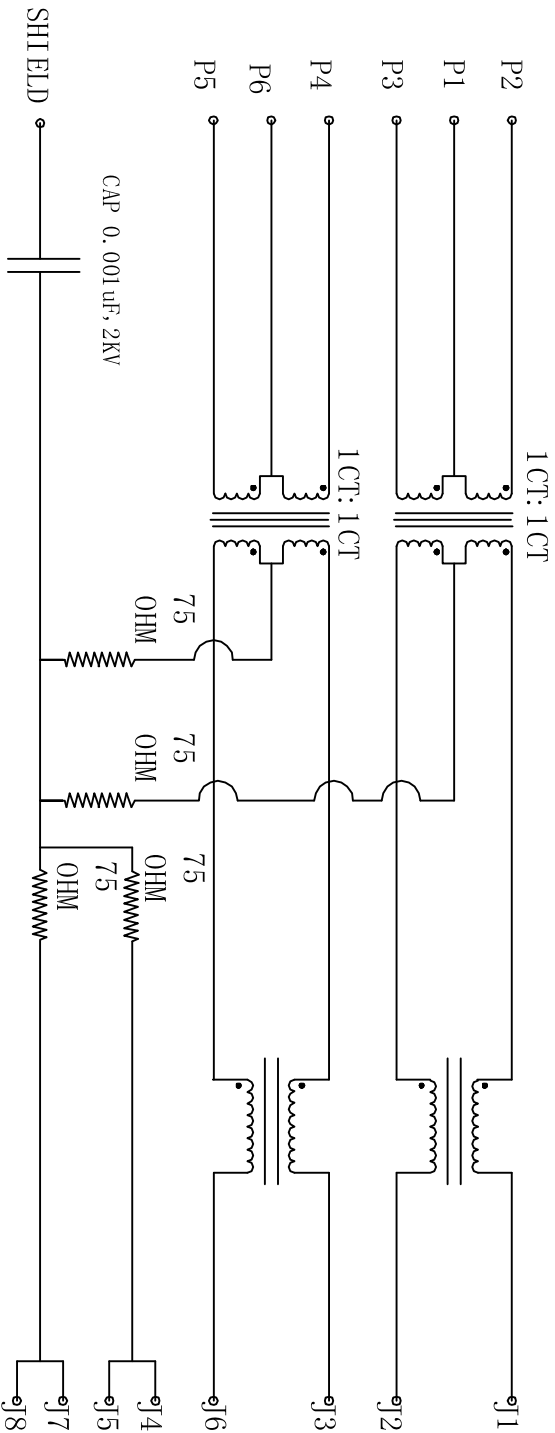


Rev	AWO #	Description	Date	Appr
		SEE SHT 1 OF 2 FOR REVISION		

APPROVED: _____

DATE: _____ TITLE: _____



Pin	Orange	Green	Orange	Green
P7	+	-	+	-
P8	-	+	-	+

ELECTRICAL SPECIFICATIONS

- Turns Ratio @100KHz: (P2 ~ P3) : (J1 ~ J2) 1:1 ±5%
(P4 ~ P5) : (J3 ~ J6) 1:1 ±5%
- Primary Inductance: 350uH min @ 100KHz; 0.1V 8mA DC Bias
- DC Resistance: (J1 ~ J2) : (J3 ~ J6): 1.2 Ohms Max.
- Insertion Loss: 1-30MHz -1.2dB TYP
30-60MHz -1.2dB MAX
60-80MHz -1.2dB TYP
- Return Loss: 1-30MHz -16dB TYP
30-60MHz -10dB TYP
60-80MHz -30dB TYP
- Cross Talk: 1-100MHz Attenuation: 1-100MHz -30dB TYP
- Common to Common mode Attenuation: 1-100MHz -30dB TYP
- Isolation: Line side to shield: 1500VAC or 2250VDC

ADAM TECH

909 Rahway Avenue, Union, NJ 07083
Phone: 908-687-5000 Fax: 908-687-5710

MODULAR JACK GANGED, 4 PORT, 8P8C
W/ LED1 ORN/GRN, LED2 ORN/GRN

UNLESS OTHERWISE SPECIFIED ALL DIMENSIONS ARE INCHES [MM] TOLERANCES: EXCEPT AS NOTED INCHES HOLES		DATE	
.X ±.10	Ø.X ±.10	4/26/11	
.XX ±.020	Ø.XXX ±.015		
.XXX ±.015	Ø.XXXX ±.010		
APPROVALS		DATE	
DRAWN	DY		
CHECKED			
APPROVED			
SIZE	PART NO.	REV.	
X	MTJG-4-88SX1-FSP-PG-L1M50	-	
REF:	S00005C	SCALE:	NTS
		SHEET	2 OF 2