

6

5

4

3

2

1

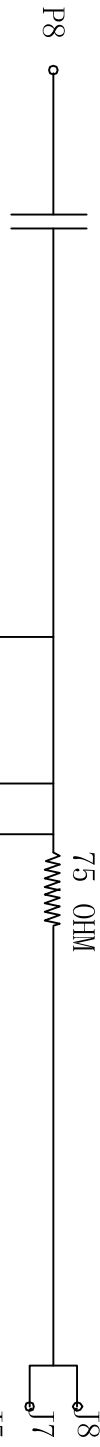
Rev	AWO #	Description	Date	Appr
		SEE SHT 1 OF 2 FOR REVISION		

APPROVED: _____

DATE: _____ TITLE: _____

D

CAP 1000pF 2KV

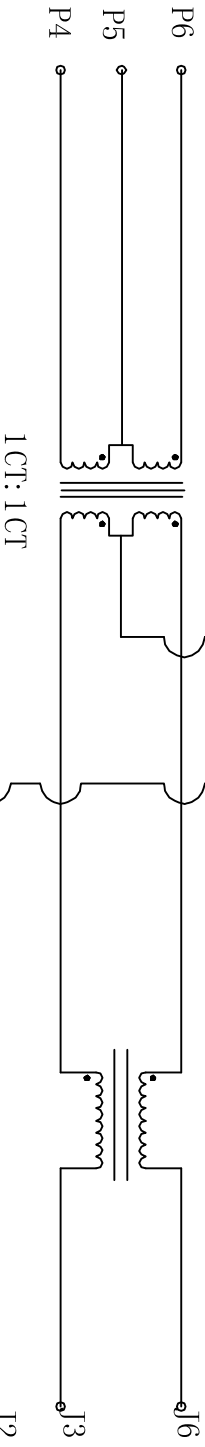


75 OHM 75 OHM

75 OHM

75 OHM

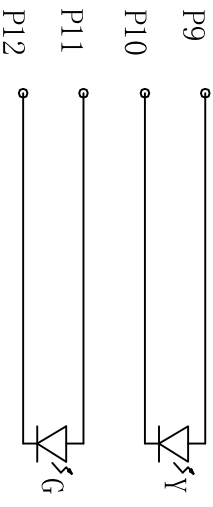
C



1 CT: 1 CT

1 CT: 1 CT

B



Y

G

ELECTRICAL SPECIFICATIONS

- Turns Ratio: (P1 ~ P2) : (J1 ~ J2) 1:1 ±3%
(P3 ~ P6) : (J3 ~ J6) 1:1 ±3%
- Primary Inductance: 350uH min. @ 100KHZ, 0.1V 8mA DC Bias
- DC Resistance: (J1 ~ J2) : (J3 ~ J6): 1.2 Ohms Max.
- Insertion Loss: 1-100MHZ : -1.2dB MAX
- Return Loss: 1-30MHZ: -16dB TYP
30-60MHZ: -12dB TYP
60-80MHZ: -10dB TYP
- Cross Talk: 1-100MHZ: -30dB TYP
- Common to Common mode attenuation: 1-100MHz -30dB TYP
- Isolation: Line side to shield: 1500VAC or 2250VDC
- DC current/voltage rating-pse pins: 350mA @57V(Continuous)

ADAM TECH

909 Rahway Avenue, Union, NJ 07083
Phone: 908-687-5000 Fax: 908-687-5710

MODULAR JACK GANGED, 2 PORT, 8P8C
W/ LED1 YELLOW, LED2 GREEN

UNLESS OTHERWISE SPECIFIED ALL DIMENSIONS ARE INCHES [MM] TOLERANCES: EXCEPT AS NOTED INCHES .X .10 Ø.X ±.10 .XX ±.020 .XXX ±.015 .XXX ±.015 .XXXX ±.010		HOLE ±.10 ±.015 ±.010	
APPROVALS		DATE	
DRAWN	DY	11/15/10	
CHECKED			
APPROVED			
REF:	SIZE	PART NO.	REV.
S00005C	X	MTJG-2-88TX1-FSD-LG-M5	-

6

5

4

3

2

1