

6

5

4

3

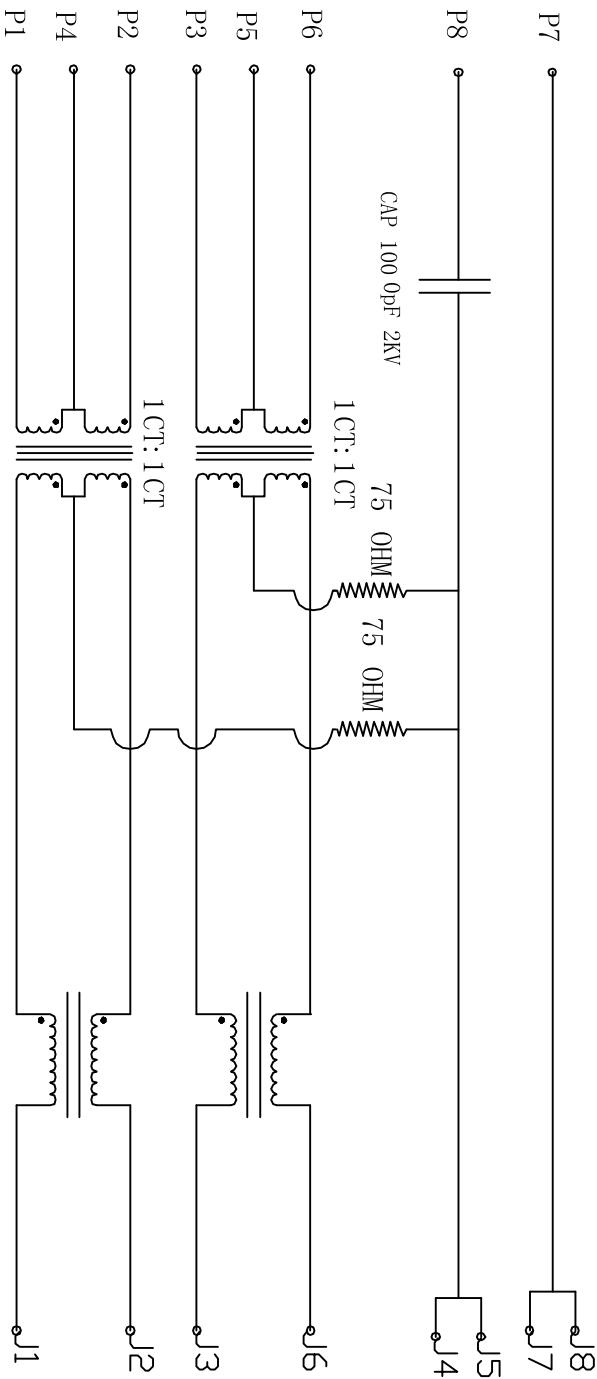
2

1

Rev	AWO #	Description	Date	Appr
		SEE SHT 1 OF 2 FOR REVISION		

APPROVED: _____

DATE: _____ TITLE: _____



ELECTRICAL SPECIFICATIONS

- Turns Ratio@100KHz: (P1 ~ P2) : (J1 ~ J2) 1:1 ±3% (P3 ~ P6) : (J3 ~ J6) 1:1 ±3%
- Primary Inductance: 350uH MIN @ 100KHz, 0.1V 8mA DC Bias
- DC Resistance: (J1 ~ J2) : (J3 ~ J6): 1.2 Ohms Max.
- Insertion Loss: 1-100MHz: -1.2dB Max
- Return Loss: 1-30MHz -16dB TYP
30-60MHz -12dB TYP
60-80MHz -10dB TYP
- Cross Talk: 1-100MHz -30dB TYP
80-80MHz -10dB TYP
- Common to common mode attenuation: 1-100MHz -30dB TYP
- Isolation: Line side to shield: 1500VAC or 2250VDC
P1~P8 to J1~J8: 1500VAC or 2250VDC
- DC Current/Voltage rating-per pins: 350mA@57V (Continuous)

UNLESS OTHERWISE SPECIFIED
ALL DIMENSIONS ARE INCHES [MM]
TOLERANCES: EXCEPT AS NOTED
INCHES
.X ±.10 Ø.X ±.10
.XX ±.020 Ø.XXX ±.015
.XXX ±.015 Ø.XXXX ±.010

ADAM TECH
909 Rahway Avenue, Union, NJ 07083
Phone: 908-687-5000 Fax: 908-687-5710

APPROVALS		DATE	TITLE
DRAWN	DY	3/23/11	MODULAR JACK GANGED, 2 PORT, 8P8C
CHECKED			
APPROVED			
SIZE	PART NO.	REV.	
X	MTJG-2-88TX1+FSB-M104	-	
REF:	S00005C	SCALE:	NTS
		SHEET	2 OF 2