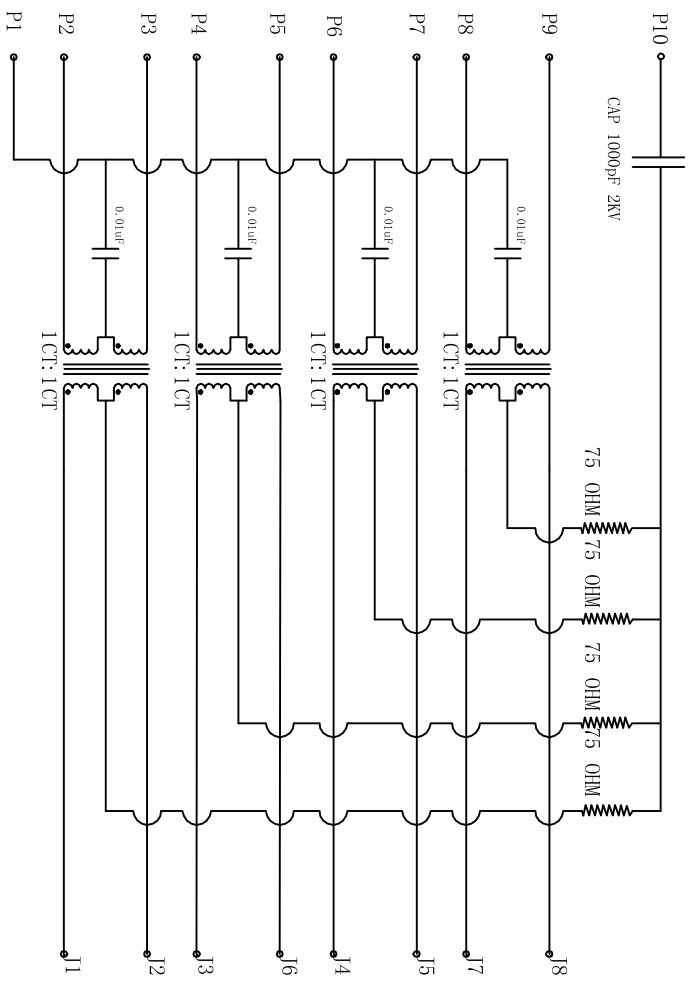


Rev	AWO #	Description	Date	Appr
		SEE SHT 1 OF 2 FOR REVISION		

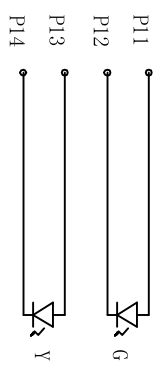
APPROVED: _____

DATE: _____ TITLE: _____



ELECTRICAL SPECIFICATIONS

- Turns Ratio: (P2 ~ P3) : (J1 ~ J2) 1:1 ±3%
 (P4 ~ P5) : (J3 ~ J6) 1:1 ±3%
 (P6 ~ P7) : (J4 ~ J5) 1:1 ±3%
 (P8 ~ P9) : (J7 ~ J8) 1:1 ±3%
- Inductance: (P2 ~ P3) 350uH min. @ 0.1V, 100KHZ, 8mA DC Bias
 (P4 ~ P5) 350uH min. @ 0.1V, 100KHZ, 8mA DC Bias
 (P6 ~ P7) 350uH min. @ 0.1V, 100KHZ, 8mA DC Bias
 (P8 ~ P9) 350uH min. @ 0.1V, 100KHZ, 8mA DC Bias
- Leakage Inductance: P2 ~ P3 (with J1 and J2 Short): 0.35uH Max. @ 1 MHZ
 P4 ~ P5 (with J3 and J6 Short): 0.35uH Max. @ 1 MHZ
 P6 ~ P7 (with J4 and J5 Short): 0.35uH Max. @ 1 MHZ
 P8 ~ P9 (with J7 and J8 Short): 0.35uH Max. @ 1 MHZ
- Interwinding Capacitor: (P2 ~ P3) : (J1 ~ J2): 115pf max. @ 1MHZ
 (P4 ~ P5) : (J3 ~ J6): 115pf max @ 1MHZ
 (P6 ~ P7) : (J4 ~ J5): 115pf max @ 1MHZ
 (P8 ~ P9) : (J7 ~ J8): 115pf max @ 1MHZ
- DC Resistance: (J1~J2):(J3~J6):(P4~P5) : (J3~J6) :1500VDC OR 2250VDC
 (P6~P7) : (J4~J5) : (P8~P9) : (J7~J8) :1500VDC OR 2250VDC
- Dielectric Withstanding: (P2~P3) : (J1~J2) : (P4~P5) : (J3~J6) :1.2 Ohms Max.
- Insertion Loss: 0.5MHZ TO 100 MHZ : -1.2dB MAX
 40.1MHZ TO 40MHZ: -18dB MIN
- Return Loss: 0.5MHZ to 100MHZ: -(12-20LOG(f/80)dB MIN)(WHERE F IS IN MHZ)
 40.1MHZ to 40MHZ: -35dB MIN
- Cross Talk: 0.5MHZ to 100MHZ: -(33-20LOG(f/50)dB MIN)(WHERE F IS IN MHZ)
 40.1MHZ to 100MHZ: -(33-20LOG(f/50)dB MIN)(WHERE F IS IN MHZ)
- Common to Common mode attenuation: 0.5MHZ TO 100MHZ: -30dB MIN



UNLESS OTHERWISE SPECIFIED
 ALL DIMENSIONS ARE INCHES [MM]
 TOLERANCES: EXCEPT AS NOTED
 INCHES HOLES
 .X ±.10 Ø.X ±.10
 .XX ±.020 Ø.XX ±.015
 .XXX ±.015 Ø.XXX ±.010

ADAM TECH
 909 Rahway Avenue, Union, NJ 07083
 Phone: 908-687-5000 Fax: 908-687-5710

MODULAR JACK GANGED, 1 PORT, 8P8C
 W/ LED1 GREEN, LED2 YELLOW

DRAWN	DY	11/23/10	SIZE	PART NO.	REV.
CHECKED			X	MTJ-88TX1-FSD-PG-LH-M129	
APPROVED			REF:	S00005C	SCALE: NTS SHEET 2 OF 2